

GOVERNMENT OF INDIA
ARCHAEOLOGICAL SURVEY OF INDIA

CENTRAL
ARCHAEOLOGICAL
LIBRARY

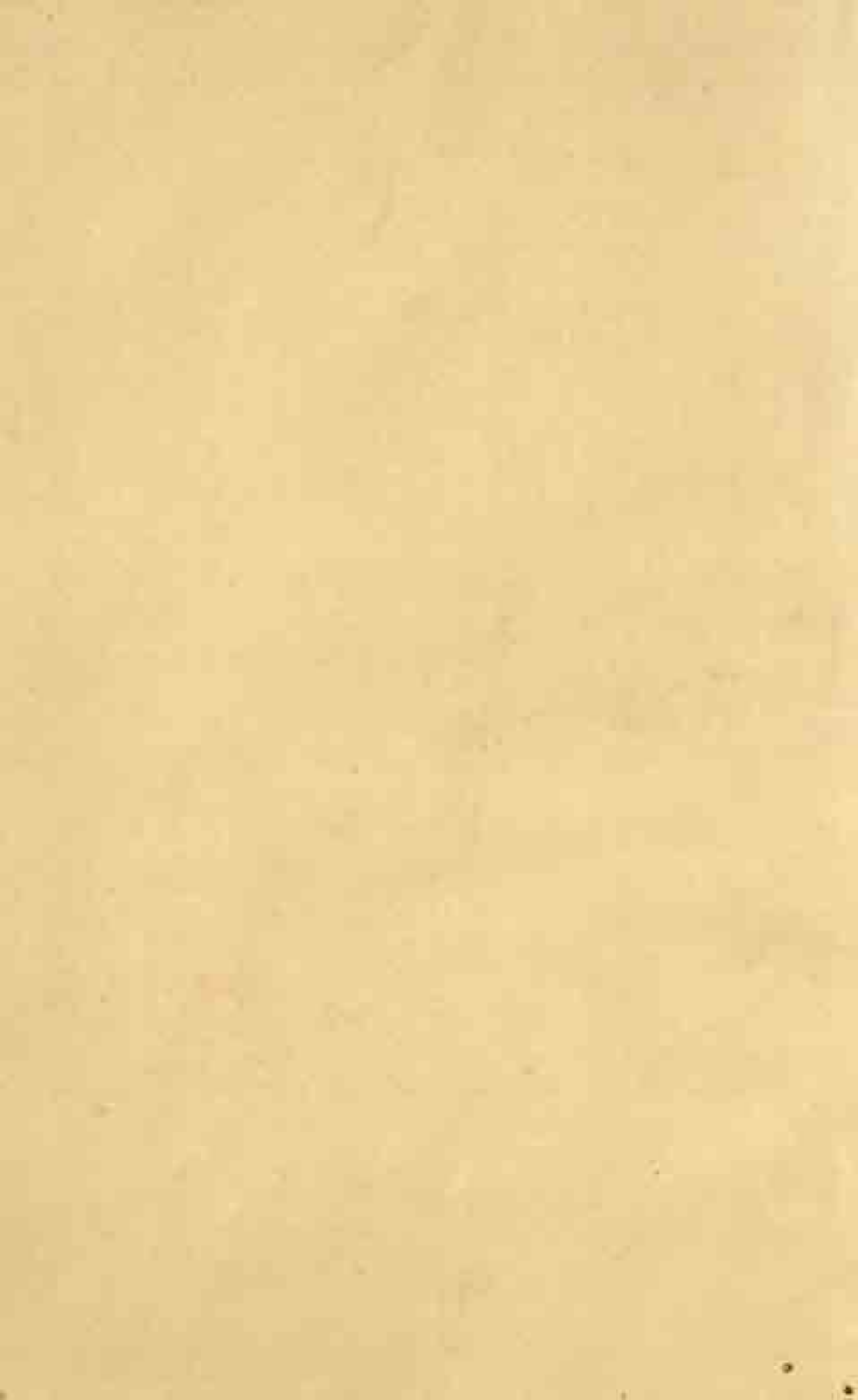
ACCESSION NO 36457

CALL No. 069.53095435

S.M.I.

D.G.A. 79





CATALOGUE & GUIDE
To
SARDAR MUSEUM, JODHPUR



CATALOGUE & GUIDE
To
SARDAR MUSEUM, JODHPUR

36457



069.53095435

S.M.J.



1960-61

Published by
DEPARTMENT OF ARCHAEOLOGY & MUSEUMS,
GOVERNMENT OF RAJASTHAN, JAIPUR

Museum Timings:

Summer 7-30 to 10-30 a.m. 3-30 to 6-00 p.m.

Winter 10 a.m. to 4-30 p.m.

Closed on Fridays & Gazetted Holidays.

1st Edition: 1961

1000 Copies

CENTRAL ARCHAEOLOGICAL
LIBRARY, NEW DELHI.

Acc. No. 3.6457.....

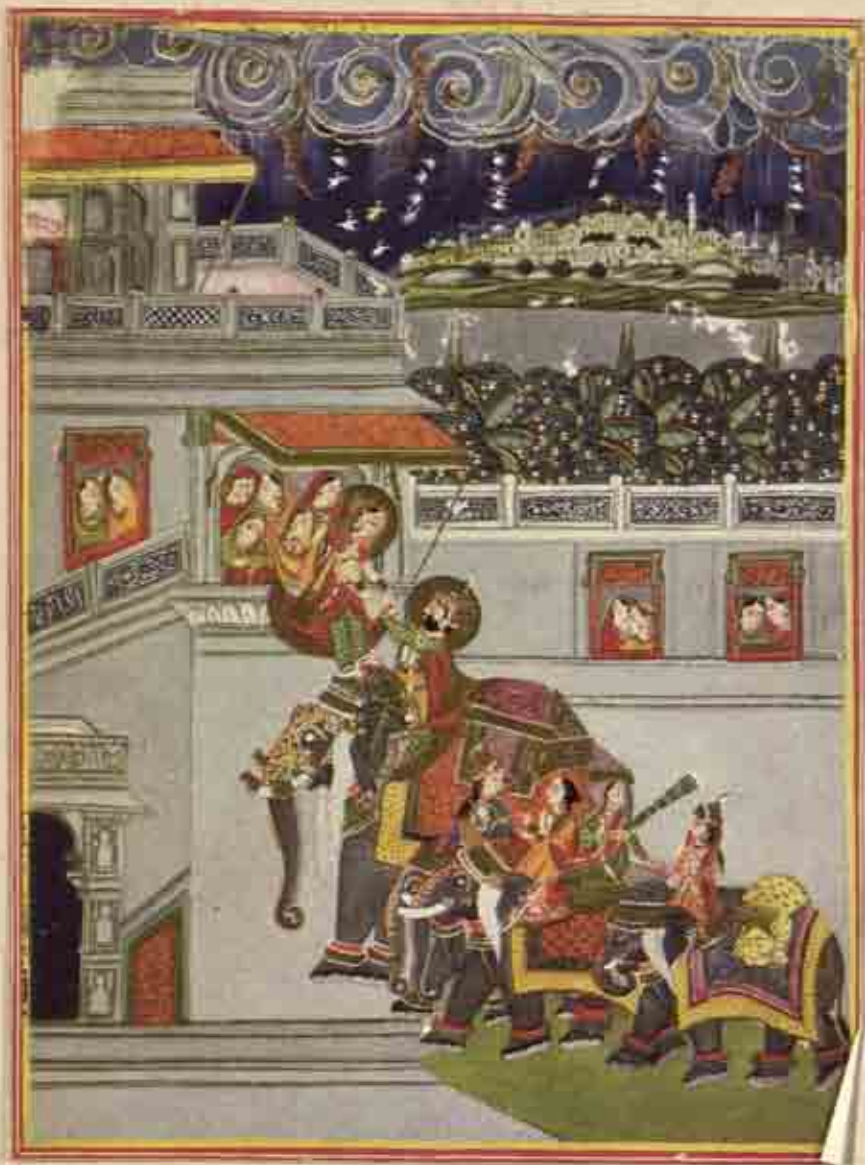
Date 1.6.11.62.....

Call No. 069.53095435.....

S.M.J.

CONTENTS

	Page
A Brief Note	i
Archaeological Section	3—9
Painting Section	10—26
Textile Section	27—28
Leather Section	29—31
Metal Section	32—34
Stone Section	35—39
Ivory Section	40—42
Wood Section	43—49



Elopement, Marwar School 18th Cent. A.D.

SARDAR MUSEUM, JODHPUR

A BRIEF NOTE

THE exhibition of the Marwar objects of art, held in the year 1909, worked as a nucleus for the Marwar Industrial Museum, which was started at a place outside Sojati Gate in Jodhpur city. Not before long, the museum was shifted, at first, to a house outside Rai-ka-Bagh and then to Sursagar Garden. It was here that in 1914 a full-fledged museum on a modest scale was established. In 1916, the Government of India recognised this museum and it was in the year 1917 that the Industrial Museum was named as the Sardar Museum, after the name of Late His Highness Maharaja Shri Sardar Singhji Saheb. At this time the Archaeology Section (consisting of sculptures), paintings of Jodhpur and other sub-schools of Rajasthani school were added to its collection. Unfortunately, those beautiful Rajasthani miniatures, which adorned the gallery of the museum then, are now no more in the Museum as these were taken back by the then H.H. on the eve of integration. These have been replaced by the miniatures purchased by the museum from time to time. Later on, it was felt that Sursagar Gardens were situated in an out of the way place and the then venue of the museum was not convenient, in any way, for the visitors. The museum was shifted back in 1927 to its former building (known as Ugamji's Bungalow). But from 1936 the museum came to be set up in its own building, specially constructed for the purpose, in the Umaid Gardens.

The Sardar Museum, Jodhpur, is at present under re-organisation. Modern and scientific displays are being provided within the limitations imposed by space and equipment and the problem of overcrowding is being solved by subjecting the collection to the process of eliminations on the basis of their artistic value and also on that of their utility to the viewer. Old and worn out exhibits of Natural History Section have now given place to the latest type of flora and fauna dioramas and mirrorscopes depicting cultural scenes from local history. All this is being done to turn this museum into a new museum of regional type. The museum, after re-organisation, shall have only three sections which have been dealt with in the present catalogue.

ARCHAEOLOGY SECTION :

This section contains some of the most important and unique sculptures of the area, as the Sardar Museum is a regional museum of Marwar. Only selected and representative pieces from each of the important places or sites have been displayed and several of them kept in reserve collection at Mandor. Amongst the displayed sculptures, those worth mentioning are the unique *Torana* pillars of the fifth century from Mandor, Gajalakshmi from Osian, bust of a dancing girl and a female torso (12th century A.D.) from Kiradu, Yoganarayana (13th century A.D.) from Deedwana and Jivanta Svāmi (13th century A.D.) from Khinwasar.

INDUSTRIAL SECTION :

This section consists of the exhibits of arts and crafts from Jodhpur Division. These include marble work from Makrana, yellow stone work from Jaisalmer, ivory work of Merta, metal work of Nagaur, lacquered work of Bagri and 'Chundri' and leather works of Jodhpur.

PAINTING SECTION :

This section has mostly miniatures in it. These miniatures are of the various schools of Jodhpur, Mewar, Jaipur etc. Besides this, there are full-size portraits of the past rulers of Marwar, done in oil.

Sardar Museum, Jodhpur, as a regional museum of Marwar, gives a glimpse of Marwar — past and present — on the basis of its museum group cases, crafts, paintings and sculptures, and deserves a visit by all those lovers of art and culture, who want to know about Marwar and its culture within a couple of hours. Limitations of space within the present building preclude many other representations of several other phases of Marwar culture but that day would not be too far off when, with the addition of further space in the present building, several other phases of Marwar culture would see themselves represented.

Sagat Singh
Durga Lal

ARCHAEOLOGICAL SECTION

1. *Torana Pillar (I)*

Red sandstone, depicting scenes from the life of Lord Kṛishṇa. Panels from top to bottom are divisible into five parts as under :—

- (i) a scene showing Kṛishṇa uplifting mountain Govardhana, thereby saving the herd of cows from the calamity caused owing to the fury of Indra, the God of Rain;
- (ii) traces of an obliterated inscription;
- (iii) a scene showing standing Yaśodā engaged in churning butter and representing Kṛishṇa as stealing butter from a clay pot;
- (iv) Śakata-bhanga scene;
- (v) a scene showing child Kṛishṇa lying on the bed with his mother Yaśodā with one of his hands on mother's breast and the other holding a toy resembling a bird.

Size : 12' × 2'

Mandor — Gupta Period.

Acquisition No. 2107(A).

2. *Torana Pillar (II)*

Red sand stone, depicting scenes from the life of Lord Kṛishṇa. Five panels from top to bottom depict the following scenes :—

- (i) a scene showing Dhenuka-Vadha;
- (ii) a scene depicting Kāliya-mardana episode. In this scene the left leg of Kṛishṇa is placed on the head of Kāliya Nāga, and the right and left hands of Kṛishṇa are holding a bunch of flowers and the snake tail respectively;
- (iii) a scene representing Balarāma, seated on the shoulders of the demon Pralamba and hitting him with his fist. On his right side are shown Śrīdāmā on the shoulder of Shri Kṛishṇa and Gopa Vṛishabhānu on the shoulder of Bhadrasena;
- (iv) a scene showing Kṛishṇa holding the two horns of the bull-faced demon;
- (v) a scene representing Kṛishṇa, engaged in fight with the horse-faced demon Keśī.

Mandor — Gupta Period.

Acquisition No. 2107 (B).

3. *Large Earthen Pot.*

It is oval-shaped, narrow towards the top with mouth-ring broken.

Size : Ht. 4'5"; Circumference 10'3"

Mandor — Gupta Period.

Acquisition No. 1567 (i).

4. *Part of a Pillar.*

Red sand-stone, carved with human figures in various poses. Middle of the pillar carved with floral pattern; Mangalaghata, Kirtimukha and human figures.

Size: 5'8" × 1'8"

Mandor — Gupta Period.

Acquisition No. 2108 (A).

5. *Part of a Pillar*

Same as serial No. 1 but badly defaced.

Size: 5'10" × 1'8"

Mandor — Gupta Period.

Acquisition No. 2108 (B).

6. *Head of a male figure*

Red sand-stone. The head having curly hairs in a big shade, hiding the ears. Seems to be a *Dikpala*, supporting the *Āmalaka* of a temple *sikhara*.

Size: 11" × 10"

Mandor — Gupta Period.

Acquisition No. 1047 (9).

7. *Frieze*

Yellow stone, carved with an Arhat (Persian Wheel) and figures of warriors on its left; on the right, a camel drinking water and a man standing by its side.

Size: 3' × 7'

Mandor — circa 11th century A.D.

Acquisition No. 1047 (16).

8. *Frieze*

Yellow stone, carved with a camel-cart, driven by three camels. Three warrior figures are shown on the cart.

Size: 2'6" × 7'

Mandor — circa 11th century A.D.

Acquisition No. 1047 (17).

9. *Part of door-jamb*

Red sand-stone, with figures of Vishnu and its various incarnations, such as Varāha, Nṛsimha, Vāmana etc. and figures of female attendants.

Size: 2'2" × 8"

Mandor — circa 10th-11th century A.D.

Acquisition No. 1047 (2).

10. *Part of door-jamb*

Red sand-stone. Almost the same type of figures as in serial No. 9.

Size: 2'2" × 9"

Mandor — circa 10th-11th century A.D.

Acquisition No. 1047 (3).

11. *Lintel piece of Navagraha*

Red sandstone; this is a part of the Navagraha lintel, containing four figures.

Size: $1'6'' \times 9''$

Mandor — *circa* 11th century A.D.

Acquisition No. 1047 (6).

12. *Lintel piece of Navagraha*

Red sandstone; this is another part of the above piece of Navagraha containing five figures.

Size: $1'10'' \times 1'$

Mandor — *circa* 11th century A.D.

Acquisition No. 1047 (11).

13. *Head of Vishnu*

Red sandstone; adorned with richly jewelled *mukuta* and *kundala* in the ears.

Size: $9'' \times 6''$

Mandor — *circa* 10th-11th century A.D.

Acquisition No. 1047(15).

14. *Small portion of a Pillar*

Red sandstone. A royal couple seated together. A queen sitting with folded hands on the right of the prince.

Size: $9'' \times 11''$

Mandor — *circa* 11th century A.D.

Acquisition No. 1047(4).

15. *Bust of Padmapāni (Yaksha)*

Red sandstone. The Yaksha is shown wearing a wig on his head and holding a lotus in his right hand; left hand broken.

Size: $1'5'' \times 1'8''$

Mandor — Gupta Period.

Acquisition No. 1567(4).

16. *Vishnu*

Red sandstone, in standing posture; four-handed; one right upper-hand broken; holding conch in upper left-hand. The two lower hands are resting on the heads of two dwarfs (*Āyudha puruṣas*) on His either side.

Size: $20'' \times 26''$

Kirādu — 12th century A.D.

Acquisition 1422(14).

17. *Torana-piece (upper part)*

Sandstone. Its top portion depicts warrior figures, holding swords in their hands and coming out from the mouth of a crocodile (*makara*). Between two *makara*-heads, in a miniature niche, stands a small dancing figure.

Size: 22" × 7"

Kirādu — 12th century A.D.

Acquisition No. 1422(12).

18. *Bust of a Dancing Girl*

Sandstone. Standing in a graceful dancing pose having right hand over her head while the left one towards her breast. She is richly adorned with ornaments, viz. necklaces, armlets, bangles etc.

Size: 13" × 8"

Kirādu — 12th century A.D.

Acquisition No. 1422(4).

19. *Female Torso*

Sandstone. In standing posture, the breast of the female is tied with a thin cloth-paṭṭī, having a beautiful knot in the middle of the breast. She is holding a drinking bowl in between the fingers of her left hand, which is broken. It is peculiar that she is wearing a sash across her left shoulder.

Size: 12" × 6"

Kirādu — 12th century A.D.

Acquisition No. 1422(8).

20. *Part of Pillar*

Sandstone. It contains an ornamental bird with feathers like peacock in a medallion.

Size: 15" × 8"

Kirādu — 12th century A.D.

Acquisition No. 1422(10).

21. *Kichak-Bracket*

Sandstone. The figure contains four hands, left hand broken, wearing necklace, armlets and bracelets but with a peculiarity that the left leg has one anklet while double anklets are on the right leg.

Size: 14" × 14"

Kirādu — 12th century A.D.

Acquisition No. 2322(26).

22. *Torso (female)*

Sandstone; richly carved and ornamented with fine *Kapi-mekhalā* having beautiful pendants hanging on her thighs.

Size: 13" × 8"

Kirādu — 12th century A.D.

Acquisition No. 1422.

23. *Female Bust*

Sandstone; both hands broken; fine hair style with a head ornament and wearing a necklace with pendants.

Size : 12" × 9"

Kirādu — 12th century A.D.

Acquisition No. 1422(6).

24. *Female Bust*

Sandstone; having *kundalas*, head ornaments, necklace and armlets — boldly executed. The style of hair dressing with beautiful knot hanging above her right shoulder is unique.

Size : 15" × 10"

Kirādu — 12th century A.D.

Acquisition No. 1422(5).

25. *Male Torso*

It is of sandstone and adorned with fine ornaments.

Size : 18" × 9"

Kirādu — 12th century A.D.

Acquisition No. 1422(1).

26. *Frieze — Sandstone*

It has three upright panels. The one on the left, facing the side, is of a standing damsel with a mirror. In the front on the right is a central figure of four-armed Goddess, holding lotus in her upper right hand and a book in her upper left. Two lower hands of the figure are missing. She is crowned with a snakehood. This figure is flanked by figures of *Gajashārdūlas* and dwarfs. On her left is a standing figure of a damsel with highly jewelled ornaments.

Size : 29" × 25"

Kirādu — 12th century A.D.

Acquisition No. 1046(12).

27. *Corner Frieze*

Sandstone; with figures of musicians and dancers (males and females) in various postures.

Size : 21" × 15"

Kirādu — 12th century A.D.

Acquisition No. 2322(24).

28. *Panel of Four Dancing Figures*

Sandstone; the figures are in peculiar dancing poses; one of them is holding sword in its right hand.

Size : 15" × 6"

Kirādu — 12th century A.D.

Acquisition No. 1422(13).

29. *Sculptured Piece*

Sandstone; a couple in sitting posture in a medallion. The male playing on flute and the female in a singing pose with her right hand raised upwards and left hand bent downwards.

PAINTING SECTION

1. *Maharaja Ramsinghji, Jodhpur*

The Maharaja is standing with a sword in his left hand and a flower in the right. He wears white *jāmā* and long towering *pagri*.

Size: 15" × 8"

School — Rajasthani (Jodhpur).

Period — 18th century.

Acquisition No. 2491.

2. *Rao Ridmalji of Marwar*

The Raoji is sitting on 'Gaddi' with a cushion at his back. He holds a sword in the left hand and a shield in his right. He is wearing a white *jāmā* and *pagri*.

Size: 11½" × 9"

School — Rajasthani (Jodhpur).

Period — 18th century.

Acquisition No. 2489.

3. *Thakur Shersingh Sardarsinghot of Riyan (Jodhpur)*

Thakur Shersingh is riding on dark-brown horse; his smoking hukka (hubble-bubble) is being carried by an attendant (on foot) by the side of the horse. He wears a white *jāmā* and a tall towering *pagri*.

Size: 22½" × 3½"

School — Rajasthani (Jodhpur).

Period — 18th century.

Acquisition No. 2489.

4. *Mahārāj Kumār Shri Bhimsinghji (Jodhpur)*

Mahārāj Kumār is standing, wearing red (vermilion) *jāmā* and *pagri*. He has a sword in his left hand and a flower in the right.

Size: 14½" × 11"

School — Rajasthani (Jodhpur).

Period — 18th century.

Acquisition No. 2490.

5. *Maharaja Bhimsinghji (Jodhpur)*

The Maharaja is sitting under a red canopy. He is holding a flower in his right hand while the left hand is resting on his shield. Two attendants are standing behind him. One is holding a "morchhal" and the other a sword.

Size: 14" × 11"

School — Rajasthani (Jodhpur).

Period — 19th century.

Acquisition No. 2326.

6. *Elopement of princess*

A prince on an elephant is attempting to run away with his beloved, when she is at the palace window. There are in the same row three other smaller elephants goaded by female riders. There are dark rolling clouds and white birds at the top. A city is shown in the distant background.

Size: $15'' \times 12''$

School — Rajasthani (Jodhpur).

Period — 19th century.

Acquisition No. 742.

7. *Pabu Dhandal*

Pabuji is riding on black mare named Kesar, with two warrior attendants, named Chanda and Damba.

Size: $13'' \times 12\frac{1}{2}''$

School — Rajasthani (Jodhpur).

Period — 19th century.

Acquisition No. 1076.

8. *Raja Gaj Singh (Jodhpur)*

The ruler is standing, wearing white *jāmā* and *pagri*, holding sword in his right hand and a white flower in the left.

Size: $9\frac{1}{2}'' \times 6''$

School — Rajasthani (Jodhpur).

Period — 18th century.

Acquisition No. 2315.

9. *Rāwal Shri Mallināthji*

Mallināthji is riding on brown (kumet) horse, wearing white *jāmā* and *pagri*. A lady is standing in front of him with a *badbeda* (vessel with flowers signifying reception).

Size: $15'' \times 12\frac{1}{2}''$

School — Rajasthani (Jodhpur).

Period — 19th century.

Acquisition No. 1061.

10. *Raja Ajit Singhji (Jodhpur)*

The ruler is sitting under a red canopy wearing green *jāmā* and red *pagri*, with a sword in his right hand and a flower in the left. Two attendants are standing behind him. One of them is holding a "morchhal" and the other a red shield.

Size: $13'' \times 9\frac{1}{2}''$

School — Rajasthani (Jodhpur).

Period — 19th century.

Acquisition No. 2317.

11. *Rajasingh*

The ruler is riding on a white horse having its legs painted red. One *chauri*-bearer is seen moving on foot. The painting has blue background against which white birds are seen flying in the sky.

Size: $10\frac{1}{2}'' \times 8''$

School — Rajasthani (Jodhpur).

Period — 18th century.

Acquisition No. 2356.

12. *Maharaja Bhimsinghji of Jodhpur*

The Maharaja is sitting on a throne (*Simhāsana*) with a sword in his left hand and a flower in the right. Three attendants are standing behind him. The Maharaja is wearing white *jāmā* and red *pagri*, and has a golden halo round his face.

Size: $13'' \times 9\frac{1}{2}''$

School — Rajasthani (Jodhpur).

Period — 18th century.

Acquisition No. 2355.

13. *A prince — enjoying music*

A prince is sitting on a chair under red canopy, wearing orange-coloured *jāmā* and red-flowered *pagri*, holding a flower in his right hand and a sword in his left. Three attendants are standing behind him while three dancing girls are seen entertaining him with music.

Size: $13'' \times 12''$

School — Rajasthani (Jodhpur).

Period — 19th century.

Acquisition No. 2510.

14. *A prince — with Courtiers*

A prince is sitting on a chair in the open courtyard of a palace, wearing white *jāmā* and orange-coloured *pagri* with *sarpech* and holding a flower in his right hand. Three attendants are standing behind him and three courtiers with folded hands are shown in front of him.

Size: $12'' \times 9''$

School — Rajasthani.

Period — 19th century.

Acquisition No. 2511.

15. *Maharaja Mansingh (Jodhpur)*

The Maharaja is standing under a red canopy in the garden terrace, wearing white *jāmā* and red-flowered *pagri* with his right hand resting on a straight sword.

Size: $13'' \times 10''$

School — Rajasthani (Jodhpur).

Period — 19th century.

Acquisition No. 2513.

16. *A Prince enjoying Court-dance*

A prince is sitting on a 'Gaddi' (with cushion) under a white-flowered canopy, wearing white *jāmā* and orange-coloured *pagri* with *sarpech*, holding a flower in his right hand and the left hand is resting on his shield. In front of him are seen two dancing girls amidst courtiers.

Size: 15" × 12"

School — Rajasthani (Jodhpur).

Period — 19th century.

Acquisition No. 2508.

17. *A prince with dancing girls*

The prince is sitting in a garden terrace with cushion at his back, wearing golden striped red *jāmā* and blue towering *pagri*, holding a sword in his right hand and enjoying music of the four dancing girls sitting in front of him.

Size: 13" × 12"

School — Rajasthani (Jodhpur).

Period — 19th century.

Acquisition No. 2509.

18. *Bārāmāsā — Month of Pausa*

A prince is seen ready to move out while the queen detains him by her love talks. A horse with saddle is seen ready in one corner for the prince.

Size: 9½" × 7"

School — Rajasthani (Jodhpur).

Period — 18th century.

Acquisition No. 2519.

19. *Dholā Marvani*

Dholā and Marvani riding on a camel are approaching towards Narwar. Dholā seating in the front seat is facing towards Marvani and is holding the reins of the camel.

Size: 10" × 8"

School — Rajasthani (Jodhpur).

Period — 18th century.

Acquisition No. 2518.

20. *Dholā Marvani*

Dholā, riding on a camel back is seen proceeding towards Pungal to bring Marvani. In the background can be seen the city.

Size: 14" × 9½"

School — Rajasthani (Jodhpur).

Period — 18th century.

Acquisition No. 2493.

21. *Maharaja Mansingh (Jodhpur)*

The Maharaja is standing with folded hands before his Guru. Nāthaji is sitting in a shrine. An attendant with a morchhal (whisk) stands behind Nāthaji.

Size: $14\frac{1}{2}'' \times 11\frac{1}{2}''$

School — Rajasthani (Jodhpur).

Period — 19th century.

Acquisition No. 2494.

22. *Maharaja Bakhat Singh (Jodhpur)*

The Maharaja is seated under a red canopy and practises arrow shooting. Behind him stand three attendants with morchhal (whisk staff) and shield.

Size: $15\frac{1}{2}'' \times 12''$

School — Rajasthani (Jodhpur).

Period — 19th century.

Acquisition No. 2492.

23. *Rao Sihaji (1212-1273 A.D.)*

Life-size portrait (oil colour) of the Rao in standing posture, wearing white *jāmā* and *pagri*, sword and shield hanging to his waist.

Size: $6' \times 4'$

School — Rajasthani (Jodhpur).

Period — Modern.

Acquisition No. 1895.

24. *Rao Chundaji (1395-1423 A.D.)*

Life-size portrait (oil colour) of the Rao in standing posture, wearing white *jāmā* and *pagri*, with one sword hanging to his waist and with both hands resting on a straight sword.

Size: $6' \times 4'$

School — Rajasthani (Jodhpur).

Period — Modern.

Acquisition No. 1848.

25. *Rao Ranmalji (1428-1438 A.D.)*

Life-size portrait (oil colour) of the Rao in standing posture, wearing white *jāmā* and yellow *pagri*. A sword and a shield are seen hanging by his waist while the other straight sword held in his right hand is seen resting on his shoulder.

Size: $6' \times 4'$

School — Rajasthani (Jodhpur).

Period — Modern.

Acquisition No. 1855.

26. *Rao Jodhaji* (1453-1489 A.D.)

Life-size portrait (oil colour) of the Rao in standing posture, wearing white *jāmā* and *pagri*, holding a flower in his right hand and the left hand resting on a shield hanging to his waist.

Size: 6' × 4'

School — Rajasthani (Jodhpur).

Period — Modern.

Acquisition No. 1829.

27. *Rao Gangaji* (1515-1532 A.D.)

Life-size portrait (oil colour) of the Rao in standing posture, wearing white *jāmā* and *pagri*, a sword hanging to his waist and his two hands resting on another straight sword.

Size: 6' × 4'

School — Rajasthani (Jodhpur).

Period — Modern.

Acquisition No. 1930.

28. *Rao Maldeoji* (1532-1562 A.D.)

Life-size portrait (oil colour) of the Rao in standing posture, wearing white *jāmā* and *pagri*, a shield hanging to his waist and a *Pesh-Qabz* kept in his *kamrabanda* (waist belt).

Size: 6' × 4'

School — Rajasthani (Jodhpur).

Period — Modern.

Acquisition No. 1963.

29. *Rao Chandrasen* (1562-1581 A.D.)

Life-size portrait (oil colour) of the Rao in standing posture wearing plate armour and helmet, a sword and shield hanging to his waist with his right hand resting on another sword while the left one is on the hanging sword.

Size: 6' × 4'

School — Rajasthani (Jodhpur).

Period — Modern.

Acquisition No. 1977.

30. *Raja Udai Singh* (1583-1595 A.D.)

Life-size portrait (oil colour) of the Raja in standing posture, wearing white *jāmā* and *pagri*, his hands resting on a long stick.

Size: 6' × 4'

School — Rajasthani (Jodhpur).

Period — Modern.

Acquisition No. 1979.

31. *Sawai Raja Sur Singh (1595-1619 A.D.)*

Life-size portrait (oil colour) of the Raja in standing posture, wearing pink *jāmā* and white *pagri*, with a sword hanging to his waist.

Size: 6' × 4'

School — Rajasthani (Jodhpur).

Period — Modern.

Acquisition No. 2009

32. *Raja Gaj Singh (1619-1638 A.D.)*

Life-size portrait (oil colour) of the Raja in standing posture, wearing white *jāmā* and pink *pagri*, holding a straight sword in his right hand and a flower in his left.

Size: 6' × 4'

School — Rajasthani (Jodhpur).

Period — Modern.

Acquisition No. 2011.

33. *Maharaja Jaswant Singh I (1638-1678 A.D.)*

Life-size portrait (oil colour) of the Maharaja in standing posture, wearing white *jāmā* and *pagri*. The right hand rests on a straight sword and the left on his *kamarbanda*.

Size: 6' × 4'

School — Rajasthani (Jodhpur).

Period — Modern.

Acquisition No. 1859.

34. *Maharaja Ajit Singh (1707-1724 A.D.)*

Life-size portrait (oil colour) of the Maharaja in standing posture, wearing cream coloured *jāmā* and red *pagri*, holding sword in his left hand and a flower in his right.

Size: 6' × 4'

School — Rajasthani (Jodhpur).

Period — Modern.

Acquisition No. 1879.

35. *Maharaja Abhai Singhji (1724-1748 A.D.)*

Life-size portrait (oil colour) of the Maharaja in standing posture, wearing pink *jāmā* and orange coloured *pagri*, holding sword in his right hand and a flower in the left.

Size: 6' × 4'

School — Rajasthani (Jodhpur).

Period — Modern.

Acquisition No. 1888.

36. *Maharaja Ram Singh* (1749-1751 A.D.)

Life-size portrait (oil colour) of the Maharaja in standing posture, wearing white *jāmā* and a towering *pagri*, holding a sword in his left hand and a flower in the right.

Size: 6' × 4'

School — Rajasthani (Jodhpur).

Period — Modern.

Acquisition No. 2018.

37. *Maharaja Bakhat Singh* (1751-1752 A.D.)

Life-size portrait (oil colour) of the Maharaja in standing posture, wearing white *jāmā* and a blue *pagri* with red band, holding an arrow in his right hand and a bow in his left.

Size: 6' × 4'

School — Rajasthani (Jodhpur).

Period — Modern.

Acquisition No. 2024.

38. *Maharaja Vijaya Singh* (1752-1793 A.D.)

Life-size portrait (oil colour) of the Maharaja in standing posture, wearing white *jāmā* and dark brown *pagri* with a *sarpech*, holding flower in his right hand and sword in his left.

Size: 6' × 4'

School — Rajasthani (Jodhpur).

Period — Modern.

Acquisition No. 2025.

39. *Maharaja Mansingh* (1803-1843 A.D.)

Life-size portrait (oil colour) of the Maharaja in standing posture, wearing white *jāmā* and yellow *pagri*, both hands resting on his straight sword, a shield hanging to his waist.

Size: 6' × 4'

School — Rajasthani (Jodhpur).

Period — Modern.

Acquisition No. 2030.

40. *Maharaja Takhat Singh* (1843-1873 A.D.)

Life-size portrait (oil colour) of the Maharaja in sitting posture, wearing huge light-pink *jāmā* and a towering *pagri*, holding a straight sword in his both hands.

Size: 6' × 4'

School — Rajasthani (Jodhpur).

Period — Modern.

Acquisition No. 1037.

41. *Maharaja Jaswant Singh II* (1873-1895 A.D.)

Life-size portrait (oil colour) of the Maharaja sitting on a chair wearing flowered *achkan* and a small *pagri* with *sarpech*, his right hand resting on a sword and the left on a shawl.

Size: 6' × 4'

School — Rajasthani (Jodhpur).

Period — Modern.

Acquisition No. 1036.

42. *Maharaja Sardar Singh* (1895-1911 A.D.)

Life-size portrait (oil colour) of the Maharaja sitting on a chair, wearing yellow *achkan* and a dark *chundri* turban, a blue gown worn over *achkan*.

Size: 6' × 4'

School — Rajasthani (Jodhpur).

Period — Modern.

Acquisition No. 830.

43. *Maharaja Sumer Singh* (1911-1918 A.D.)

Life-size portrait (oil colour) of the Maharaja in a standing posture wearing *kimkhāp achkan* and dark *chundri* turban, *churidār pāyāmā* and holding right hand in his left.

Size: 6' × 4'

School — Rajasthani (Jodhpur).

Period — Modern.

Acquisition No. 1038.

44. *Maharaja Umaid Singh* (1918-1947 A.D.)

Life-size portrait (oil colour) of the Maharaja, wearing *kimkhāp achkan*, *chundri* turban with *sarpech*, both hands resting on his sword.

Size: 6' × 4'

School — Rajasthani (Jodhpur).

Period — Modern.

Acquisition No. 1503.

45. *Maharaja Hanumant Singh* (1947-1952 A.D.)

Life-size portrait (oil colour) of the Maharaja wearing *kimkhāp achkan* dark blue *chundri* turban, his left hand resting on his sword and the right posed straight.

Size: 6' × 4'

School — Rajasthani (Jodhpur).

Period — Modern.

Acquisition No. 2114.

46. *Rao Amarsingh of Nagour* (1613-1644 A.D.)

Life-size portrait (oil colour) of the Rao in standing posture wearing a plate armour and helmet, his right hand resting on a sword while the left on his waist, with the other sword hanging to his waist.

Size: 6' x 4'

School — Rajasthani (Jodhpur).

Period — Modern.

Acquisition No. 2085.

47. *Veer Durgādās Rathor*

Life-size portrait (oil colour) of Durgadasji in standing posture and wearing white *jāmā* covered with chest armour and arm-guards, holding a spear in his right hand and the left resting on one of the two swords, hanging to his waist.

Size: 6' x 4'

School — Rajasthani (Jodhpur).

Period — Modern.

Acquisition No. 2104.

48. *Sir Pratap Singh* (1845-1922 A.D.)

Life-size portrait (oil colour) of Sir Pratap Singh, the Regent of Jodhpur and Maharaja of Idar wearing full military uniform with decorations and the crown.

Size: 6' x 4'

School — Rajasthani (Jodhpur).

Period — Modern.

Acquisition No. 2131.

49. *Maharana Pratap Singh — Udaipur*

Life-size portrait (oil colour) of the Maharana in standing posture, wearing armour and helmet, holding spear in his right hand and the left one resting on the sword hanging to his waist.

Size: 6' x 4'

School — Rajasthani (Jodhpur).

Period — Modern.

Acquisition No. 2256.

50. *Mahatma Gandhi, M. K.* (1869-1948 A.D.)

Life-size portrait (oil colour) of Gandhiji in standing posture, wearing a white *dhoti* upto knees and holding a stick in his left hand while the right hand is in *abhaya* pose.

Size: 6' x 4'

School — Rajasthani (Jodhpur).

Period — Modern.

Acquisition No. 2159.

51. *Pandit Jawaharlal Nehru* (born 1889 A.D.)

Life-size portrait (oil colour) of Nehruji in standing posture, wearing a white khadi cap and jacket and holding a rolled paper in his left hand.

Size: 6' x 4'

School — Rajasthani (Jodhpur).

Period — Modern.

Acquisition No. 2180.

52. *Pañchākhyāna*

(Time is most powerful.)

The most powerful Rāvana having ten heads and twenty hands, the lord of the stronghold of Lañkā, protected by the vast sea, is seen killed by two handed beings, Rāma and Lakshmana.

Two-line inscription at the top margin.

Size: 16" x 10"

School — Rajasthani (Mewar).

Period — 18th century.

Acquisition No. 2387.

53. *Śrīmad Bhāgavata*

Sage Śukadeva narrating *Śrīmad Bhāgavata* to Parīkshit.

Parīkshit, with a *chauri*-bearer at his back, is attending the discourses of Śukadeva Muni. Behind Śukadeva are to be seen eight other sages.

Size: 15" x 9½"

School — Rajasthani (Mewar).

Period — 18th century.

Acquisition No. 2388.

54. *Śrīmad Bhāgavata*

Imprisonment of Vasudeva and Devakī (by *karnsa*)

In the right half of the picture *karnsa* is consulting Nārada while in the left half Vasudeva and Devakī are seen imprisoned in a room guarded by two demons.

Size: 15½" x 10"

School — Rajasthani (Mewar).

Period — 18th century.

Acquisition No. 2389.

55. *Bāṇa-Vedha*

Kunti is embracing her son Arjuna while other Pāṇḍavā-brothers and Kṛishṇa, along with two ladies, are seen by their side.

One-line inscription at the top margin (describing the scene).

Size: 16" x 10"

School — Rajasthani (Mewar).

Period — 18th century.

Acquisition No. 2390.

56. *Illustration from Aśvamedha*

In this painting a man has been shown watching four-headed, six-headed, eight-headed and ten-headed Brahmās (the creators) and he is, thus, able to conceive of even thirty and thirty two headed Brahmās in this progression. These Brahmās are like stars, which are likely to disappear when he is disillusioned and comes to know of the Sun — the Supreme Creator. There is one-line inscription on the top margin.

Size: $16" \times 10\frac{1}{2}"$

School — Rajasthani (Mewar).

Period — 18th century.

Acquisition No. 2391.

57. *Śrīmad Bhāgavata*

Gods offering prayer to Lord Viṣṇu.

On the approach of Gods, Brahmā goes with them to Kṣīra-sāgara (ocean) and offers prayer to Lord Viṣṇu, who is seen there reclining on Śeṣha (serpent) attended by his consort Lakṣmī.

Size: $16" \times 10"$

School — Rajasthani (Mewar).

Period — 18th century.

Acquisition No. 2392.

58. *Śrīmad Bhāgavata* — Punishment to Nāndu

Nāndu (named) devil is seen dragged by the hook of plough and beaten by Baladeva and Kṛṣṇa.

There is a one-line inscription on the top margin.

Size: $14\frac{1}{2}" \times 12"$

School — Rajasthani (Mewar).

Period — 18th century.

Acquisition No. 2393.

59. *Śrīmad Bhāgavata* — Funeral-ceremony of Satrajita

In the left half of the painting is seen Satrajita's dead body, attended by his two wives. In the palace, in the right half, Lord Kṛṣṇa is performing Satrajita's funeral ceremony.

One-line-inscription on the top margin describing the scene.

Size: $14" \times 12"$

School — Rajasthani (Mewar).

Period — 18th century.

Acquisition No. 2396.

60. *Śrīmad Bhāgavata*

Rukmīṇī receiving a message from Kṛṣṇa.

A Brāhmaṇa is conveying message of Lord Kṛṣṇa to Rukmīṇī. She is attended by three females.

A four-line inscription (at the top) describing the scene.

Size: $15" \times 12"$

School — Rajasthani (Mewar).

Period — 18th century.

Acquisition No. 2397.

61. Rāma and Lakshmaṇa with bows and arrows are seen approaching a female (Sābarī ?)
The inscription mentions Kṛishṇa on the painting. There appears to be a wrong caption.

Size: $14\frac{1}{2}'' \times 12''$

School — Rajasthani (Mewar).

Period — 18th century.

Acquisition No. 2399.

62. *Bhāgavada* — Chand and Virabhadra.

On being stopped by the gate-keepers at the entrance, Chand offers prayer to Virabhadra (Gana of Mahādeva). By the grace of Virabhadra, Mir became unconscious and Chand is able to reach inside the court of the King (Shahbuddin Ghori).

Two-line inscription at top.

Size: $15\frac{1}{2}'' \times 9\frac{1}{2}''$

School — Rajasthani (Mewar).

Period — 18th century.

Acquisition No. 2401.

63. *Bhakti Ratnāvalī*

The superiority of Human life.

The Raja (Parīkshit) is expressing his gratitude to the great sage who had shown him the correct path to achieve Salvation by *Pūjā* (worship), *Kathā* and *Dhyāna* (meditation) in contrast to worldly allurements, which result in the circle of rebirths in the form of birds, beasts etc.

Two-line inscription at the top margin.

Size: $15\frac{1}{2}'' \times 10''$

School — Rajasthani (Mewar).

Period — 18th century.

Acquisition No. 2402.

64. *Durgā-Charitra* — *Nishumbha Vadha*

A fight between Goddess Durgā, riding on a lion and accompanied by her counter-part goddesses (Mātṛikās) on their respective vehicles and the demons Shumbha and Nishumbha (in elephant chariots) followed by warriors on horse-back is depicted here. Nishumbha is seen fallen on the ground.

There is a four-line inscription on the top margin describing the scene.

Size: $18'' \times 12''$

School — Rajasthani (Mewar).

Period — 18th century.

Acquisition No. 2403.

65. *Durgā-Charitra* — *Fight with Nishumbha*

A fight between goddess Durgā accompanied by her counter-part goddesses (Mātṛikās) on their respective vehicles and Shumbha and Nishumbha (on elephant chariots), followed by warriors. Nishumbha is seen standing on the floor in a pose throwing a trident at the Goddess.

There is a three-line inscription on the top margin describing the scene.

Size: $17\frac{1}{2}'' \times 11\frac{1}{4}''$

School — Rajasthani (Mewar).

Period — 18th century.

Acquisition No. 2404.

66. *Durgā-Charitra — Udagra Vadha.*

Eighteen-handed Mahālakshmi is seen fighting with Udagra (one of the generals of Demon Mahishāsura) on horse chariot. Shower of stone slabs and trees is seen causing death of Udagra.

A two-line inscription at the top margin describes the scene.

Size: $17'' \times 11\frac{1}{4}''$

School — Rajasthani (Mewar).

Period — 18th century.

Acquisition No. 2409.

67. *Durgā-Charitra — Battle of Mahishāsura.*

Eighteen-handed goddess Mahalakshmi is seen fighting with demon Mahishāsura sitting in an elephant chariot and followed by warriors on foot and on horseback.

There is a four-line inscription on the top margin describing the scene.

Size: $17'' \times 11\frac{1}{4}''$

School — Rajasthani (Mewar).

Period — 18th century.

Acquisition No. 2405.

68. *Durgā-Charitra — Rule of Mahishāsura*

In the left half of the picture is seen Mahishāsura's rule in Aamrāvati, the capital of Indra and in the right half the gods are approaching Brahmā for guidance and help.

Three-line inscription on top margin describing the scene.

Size: $17'' \times 11\frac{1}{4}''$

School — Rajasthani (Mewar).

Period — 18th century.

Acquisition No. 2408.

69. *Durgā-Charitra — Manifestation of Mahālakshmi*

Gods, Brahmā, Vishṇu and Śiva etc. are seen praying to the Mother-Goddess, who manifests as eighteen-handed Mahālakshmi.

A four-line inscription on top margin describes the scene.

Size: $17'' \times 11\frac{1}{4}''$

School — Rajasthani (Mewar).

Period —

Acquisition No. 2406.

70. *Durgā-Charitra — Śumbha Vadha*

A fight between the Goddess, accompanied by her counter-parts, the goddesses (Mātṛikās) on their respective vehicles and Shumbha (in

elephant chariot) followed by warrior on horse-back. On one chariot Shumbha is seen with multi-hands facing the Goddess while the other is shown empty and he is seen fallen lifeless on the ground.

There is a two-line inscription on the top margin describing the scene.

Size: 17" × 11½"

School — Rajasthani (Mewar).

Period — 18th century.

Acquisition No. 2407.

71. *Durgā-Charitra — Mahishāsura Vadha*

Eighteen-handed Goddess Mahālakṣmī is seen fighting with demon Mahishāsura sitting in elephant chariot. A river of blood (from dead bodies) is seen flowing between the army of Mahishāsura and the Goddess. There is a two-line inscription on the top margin describing the scene.

Size: 17" × 11½"

School — Rajasthani (Mewar).

Period — 18th century.

Acquisition No. 2410.

72. *Śrīmad Bhāgavata — Kāṁsa Vadha*

Lord Kṛṣṇa kills a number of wrestlers and drags down Kāṁsa from his throne, kills him and stands over his body. People are seen watching the scene from inside the palaces.

There is a four-line inscription (at the top) describing the scene.

Size: 16" × 11"

School — Rajasthani (Mewar).

Period — 18th century.

Acquisition No. 2412.

73. *Śrīmad Bhāgavata — Ajagara's Salvation*

Ajgar devours Nanda amidst many other persons sleeping by his side, cowherds (*gopas*) fail to get him back, on touching of Shri Kṛṣṇa's feet, the ajgar vomits Nanda and dies, becomes divine bodied and flies to heaven. On the extreme right is seen a shrine of Goddess Ambikā.

Size: 16" × 11"

School — Rajasthani (Mewar).

Period — 18th century.

Acquisition No. 2413.

74. *Śrīmad Bhāgavata*

Nandabābā bidding farewell to Lord Kṛṣṇa.

Lord Kṛṣṇa and Baladeva expressing their love and gratitude before taking leave of Shri Nandabābā (in his court, seen in right half). Kṛṣṇa is ready to leave for Mathurā. The elephant is ready to escort him; three ladies are seen by the side of the elephant.

There is a two-line inscription (at the top) describing the scene.

Size: $15\frac{1}{2}'' \times 11''$

School — Rajasthani (Mewar).

Period — 18th century.

Acquisition No. 2414.

75. *Śrīmad Bhāgavata*

Kāliya Nāga's abode in Yamunā (Kālindī), Garuḍa while catching fish, having put nectar-pot under a *kadamba* tree, is cursed by a saint practicing penance on the bank of river Yamunā. Kāliya Nāga then comes and takes shelter there with his two wives (seen on the extreme left).

There is a three-line inscription at the top margin describing the scene.

Size: $15\frac{1}{2}'' \times 11''$

School — Rajasthani (Mewar).

Period — 18th century.

Acquisition No. 2415.

76. *Śrīmad Bhāgavata — Marriage of Baladeva with Revatī*

Baladeva's marriage performance with Revatī (at bottom left), Kṛṣṇa receiving message from Rukmiṇī (at top left). In the right half of the picture is seen Rukmiṇī, daughter of Bhīṣmaka, on hearing the news of her betrothal with Śiśupāla arranged by Rukma (her brother) despatching a special messenger to Lord Kṛṣṇa at Dvaraka.

There is a three-line inscription (at the top) describing the scene.

Size: $15\frac{1}{2}'' \times 11''$

School — Rajasthani (Mewar).

Period — 18th century.

Acquisition No. 2416.

77. *Śrīmad Bhāgavata — Kāliya Mardana*

Lord Kṛṣṇa is dancing on the hood of the multi-hooded Kālī-nāga (serpent) in the river Kālindī (Yamunā), two nāga-females stand before Kṛṣṇa with folded hands. Nanda, Yaśodā, Baladeva, cowherds and cows are seen anxiously awaiting Kṛṣṇa's coming out of the river, and the Gods are showering flowers over the Lord from the sky.

There is a five-line inscription (at the top) describing the scene.

Size: $15\frac{1}{2}'' \times 11''$

School — Rajasthani (Mewar).

Period — 18th century.

Acquisition No. 2418.

78. *Śrīmad Bhāgavata — Prasraṇādrī hill set on fire*

Jarāsandha attacks the Prasraṇa (Pampā) hills where Kṛṣṇa had hidden himself with his followers. Unable to discover Kṛṣṇa, Jarāsandha sets the hill to fire. Kṛṣṇa and Baladeva jump out of it (from a height of 10 Yojanas) and escape Dvārakā.

There is a three-line inscription describing the scene.

Size: $15\frac{1}{2}'' \times 11''$

School — Rajasthani (Mewar).

Period — 18th century.

Acquisition No. 2419.

79. *Śrīmad Bhāgavata* — *Aghāsūr Vadha*

A serpent demon Aghāsūr devours Kṛishṇa. Kṛishṇa then expands His body, tears off the demon's body resulting his death, comes out and is worshipped by the cowherds. Brahmā is seen coming on his vehicle, the swan to congratulate Him (Kṛishṇa) for killing the demon.

There is a four-line inscription describing the scene.

Size: $15\frac{1}{2}'' \times 11''$

School — Rajasthani (Mewar).

Period — 18th century.

Acquisition No. 2420.

80. *Śrīmad Bhāgavata* — *Kṛishṇa welcoming a messenger from Rukmiṇī*

In the palace of Dvārakā, the Brahmin messenger sent by Rukmiṇī is warmly received by Kṛishṇa. Kṛishṇa is seen attending him personally at meals and at bed time.

There is a three-line inscription in Hindi and a two-line inscription in Saṁskṛita at the top margin describing the scene.

Size: $14\frac{1}{2}'' \times 12''$

School — Rajasthani (Mewar).

Period — 18th century.

Acquisition No. 2394.

81. *Śrīmad Bhāgavata* — *Nandaji pays homage to Goddess Ambikā*

Nandaji accompanied by Kṛishṇa and many cowherds pay homage to Goddess Ambikā, camps there for the night and distributes alms.

There is a two-line inscription (at the top) describing the painting.

Size: $15\frac{1}{2}'' \times 11''$

School — Rajasthani (Mewar).

Period — 18th century.

Acquisition No. 2421.

82. *Śrīmad Bhāgavata* — *Lord Kṛishṇa's visit to the Land of Varuṇa (God of Water)*

Amidst the sea, in the right half of the picture, is seen reception of Kṛishṇa by Varuṇa and in the left half, abode of Viṣṇu where He is seen reclining on the bed of Śeṣha (serpent).

There is two-line inscription (at the top) describing the scene.

Size: $15\frac{1}{2}'' \times 11''$

School — Rajasthani (Mewar).

Period — 18th century.

Acquisition No. 2422.

TEXTILE SECTION

LOCAL ARTS & CRAFTS :

1. Cotton Sujani, rectangular, white, having cotton filled inside and stitched in artistic patterns.

Size : 76" × 47"

Jodhpur (Marwar) work; early 20th century.

Acquisition No. 578.

2. Cotton Lovari, rectangular, needle work on white background flowers and leaves, and glasses fitted with red, green, and orange cotton threads.

Size : 72" × 57"

Jodhpur (Marwar) work; early 20th century.

Acquisition No. 644.

3. Cotton Lahariyā turban, tie and dye work; blue, green, yellow and white bands.

Size : 29'5" × 50"

Jodhpur (Marwar) work; early 20th century.

Acquisition No. 581.

4. Cotton Chundri specimen, tie and dye work; black background with white, brown, and red dots (dibbis).

Size : 43" × 23"

Jodhpur (Marwar) work; early 20th century.

Acquisition No. 585.

5. Silk Chundri sample, tie and dye work; colours brighter than those of the above piece.

Size : 55" × 14"

Jodhpur (Marwar) work; early 20th century.

Acquisition No. 586.

6. Silken Chundri sample, similar to above.

Size : 5'5" × 22"

Jodhpur (Marwar) work; early 20th century.

Acquisition No. 586.

7. Cotton Chundri sample similar to above but with red border 3" along the sides.

Size : 55" × 25"

Jodhpur (Marwar) work; early 20th century.

Acquisition No. 585.

8. Silk Chundri sample; red background; tie and dye work; damaged.

Size: $16'' \times 14''$

Jodhpur (Marwar) work; early 20th century.

Acquisition No. 586.

9. Silk Chundri sample; red background; tie and dye work; clock design with words 'Prepared by Abdul Majid' round it.

Size: $10'' \times 10''$

Jodhpur (Marwar) work; early 20th century.

Acquisition No. 586.

10. Silk Sāri; tie and dye work; red Chundri border ($5''$) and red dots (dibbis) on white background; damaged.

Size: $5'6'' \times 7'$

Jodhpur (Marwar) work; early 20th century.

Acquisition No. 583.

11. Silk Lahariyā turban; blue, red, white, and Mava coloured bands; tie and dye work; damaged.

Size: $23'19'' \times 35''$

Jodhpur (Marwar) work; early 20th century.

Acquisition No. 582.

12. Woollen Davaniya; rectangular; crimson red; needle work; red background; geometrical patterns with orange green, white black woollen hreads with pitched glass pieces on sides and in the centre.

Size: $82'' \times 43''$

Jodhpur (Marwar) work; early 20th century.

Acquisition No. 580.

13. Woollen Namdā; white; coloured flowers woven on it.

Size: $51'' \times 33''$

Jodhpur (Marwar) work; early 20th century.

Acquisition No. 576.

14. Woollen Āsan (Seat); white, red, yellow, and green rectangular bands, and a rhombus in the centre.

Size: $23'' \times 24''$

Jodhpur (Marwar) work; early 20th century.

Acquisition No. 575.

15. Cotton carpet (Darī); white background, colourful chopar design in the centre and blue, white and yellow strips on the borders.

Size: $43'' \times 6'$

Jodhpur (Marwar) work; early 20th century.

Acquisition No. 587.

LEATHER SECTION

1. Leather Ammunition case; embroidered, four small cases (purse-shaped) embroidered with silken threads; floral designs fitted in a leather belt.

Size: $56'' \times 1\frac{1}{2}''$

Jodhpur (Marwar) work; early 20th century.

Acquisition No. 298.

2. Leather Ammunition case; embroidered; two leather embroidered cases fitted in a leather belt.

Size: $43'' \times 1''$

Jodhpur (Marwar) work; early 20th century.

Acquisition No. 292.

3. Leather belt; partially embroidered; case for sword and dagger also fitted thereto.

Size: $5'18'' \times 1\frac{1}{2}''$

Jodhpur (Marwar) work; early 20th century.

Acquisition No. 301.

4. Leather belt; embroidered; black velvet on outer side embroidered with floral designs; fitted with a case for sword.

Size: $38'' \times 3''$

Jodhpur (Marwar) work; early 20th century.

Acquisition No. 291.

5. Leather bag (Khalta); embroidered; purse-shaped.

Size: $8\frac{1}{2}'' \times 7''$

Jodhpur (Marwar) work; early 20th century.

Acquisition No. 293.

6. Leather Ammunition case; embroidered; horn-shaped.

Size: $8'' \times 7''$

Jodhpur (Marwar) work; early 20th century.

Acquisition No. 296.

7. Leather (barber's) bag; embroidered; rectangular.

Size: $7\frac{1}{2}'' \times 5\frac{1}{2}''$

Jodhpur (Marwar) work; early 20th century.

Acquisition No. 294.

8. Leather necklace for horse; embroidered with nine pendants.

Size: $5'8''$ long

Jodhpur (Marwar) work; early 20th century.

9. Leather Dumchi for horse (tail ornament); embroidered.

Size: $19'' \times 8''$

Jodhpur (Marwar) work; early 20th century.

Acquisition No. 300.

10. Leather Moharā for decorating the face of the horse; embroidered.

Size: $18'' \times 7''$

Jodhpur (Marwar) work; early 20th century.

Acquisition No. 299.

11. Velvet saddle (Chhevati) for horse; green; embroidered with floral pattern.

Size: $5' \times 29''$

Jodhpur (Marwar) work; early 20th century.

Acquisition No. 295.

12. Camel hide pot; Sunahari (golden) painted, Bikaner pattern; Surāhl-shaped.

Size: $13'' \times 8\frac{1}{2}''$

Jodhpur (Marwar) work; early 20th century.

Acquisition No. 303.

13. Camel hide pot; Sunahari (golden) painted; Bikaner pattern; Kamaṇḍala-shaped.

Size: $9'' \times 10\frac{1}{2}''$

Jodhpur (Marwar) work; early 20th century.

Acquisition No. 302(i).

14. Camel hide pot; Sunahari (golden) painted; Bikaner pattern; wine jar-shaped.

Size: $12'' \times 6\frac{1}{2}''$

Jodhpur (Marwar) work; early 20th century.

Acquisition No. 302(ii).

15. Camel hide pot; Sunahari (golden) painted; Bikaner pattern; small wine jar-shaped.

Size: $8'' \times 6\frac{1}{2}''$

Jodhpur (Marwar) work; early 20th century.

Acquisition No. 303(ii).

16. Camel hide pot; Sunahari (golden) painted; Bikaner pattern; flower vase-shaped.

Size: $7'' \times 3\frac{1}{2}''$

Jodhpur (Marwar) work; early 20th century.

Acquisition No. 303(iii).

17. Camel hide pot; Sunahari (golden) painted; Bikaner pattern; Surāhī-shaped.

Size: $13\frac{1}{2}'' \times 8''$

Jodhpur (Marwar) work; early 20th century.

Acquisition No. 303(iv).

18. Camel hide pot; Sunahari (golden) painted; Bikaner pattern; Kudiyā-shaped.

Size: $18\frac{1}{2}'' \times 9\frac{1}{2}''$

Jodhpur (Marwar) work; early 20th century.

Acquisition No. 303.

19. Camel hide pot; Sunahari (golden) painted; Bikaner pattern; wine bottle-shaped.

Size: $6'' \times 10''$

Jodhpur (Marwar) work; early 20th century.

Acquisition No. 303.

20. Camel hide pot; Sunahari (golden) painted; Bikaner pattern; Bādālā-shaped with figures of Śiva and Pārvatī on one side and Rādhā and Kṛishṇa on the other.

Size: $9'' \times 13\frac{1}{2}''$

Jodhpur (Marwar) work; early 20th century.

Acquisition No.

METAL SECTION

1. Iron lock; dasdār with flat key.

Size: $4'' \times 2\frac{1}{2}''$

Nagaur (Jodhpur) work; 19th century.

Acquisition No. 145.

2. Iron lock; dasdār; five flower pattern (Fulri) rings fitted on each side.

Size: $5'' \times 3''$

Nagaur (Jodhpur) work; 19th century.

Acquisition No. 142.

3. Iron lock; dasdār; flat with a long (11'') key.

Size: $5\frac{1}{2}'' \times 3''$

Nagaur (Jodhpur) work; 19th century.

Acquisition No. 140.

4. Iron lock; dasdār flat.

Size: $2\frac{1}{2}'' \times 2\frac{1}{2}''$

Nagaur (Jodhpur) work; 19th century.

Acquisition No. 135.

5. Iron lock; muthia; four bands in centre.

Size: $4'' \times 3''$

Nagaur (Jodhpur) work; 19th century.

Acquisition No. 136.

6. Iron lock; four-keyed.

Size: $7\frac{1}{2}'' \times 3''$

Nagaur (Jodhpur) work; 19th century.

Acquisition No. 149.

7. Iron lock; dandidār; with long (10'') flat key.

Size: $12'' \times 3''$

Nagaur (Jodhpur) work; 19th century.

Acquisition No. 134.

8. Iron lock; round, with three bands; long (18'') flat key.

Size: $6\frac{1}{2}'' \times 3''$

Nagaur (Jodhpur) work; 19th century.

Acquisition No. .

9. Iron lock; scorpion-shaped.

Size: $4\frac{1}{2}'' \times 2''$

Nagaur (Jodhpur) work; 19th century.

Acquisition No. 1535.

10. Iron lock; two-keyed.

Size: $6\frac{1}{2}'' \times 4\frac{1}{2}''$

Nagaur (Jodhpur) work; 19th century.

Acquisition No. 899.

11. Copper Kuppi (bottle); used for oiling chirāg lamps.

Size: $8\frac{1}{2}'' \times 4''$

Jodhpur (Marwar) work; 19th century.

Acquisition No.

12. Brass rolling lamp; spherical with a lamp in the centre so fitted with circular band as to keep the lamp in a stationery position.

Size: Circumference $23\frac{1}{2}''$

Jodhpur (Marwar) work; 18th century.

Acquisition No.

13. Brass wall lamp; female figure supporting the wick stand.

Size: $10\frac{1}{2}'' \times 5''$

Jodhpur (Marwar) work; 19th century.

Acquisition No. 614.

14. Iron Rolling lamp; made of simple iron wires (thin rods) with a lamp fixed in the centre so as to remain always in a stationery position.

Size: Circumference $20''$

Jodhpur (Marwar) work; 20th century.

Acquisition No. 1146.

15. Brass miniature bullock *Ratha* (chariot); one person sitting inside it; one driver (Sagri) seating in front and holding the reins of the bullocks.

Size: $5'' \times 3''$

Jodhpur (Marwar) work; 19th century.

Acquisition No. 190.

16. Brass Ikkā with canopy; one person sitting inside and driven by a driver.

Size: $5\frac{1}{2}'' \times 2\frac{1}{2}''$

Jodhpur (Marwar) work; 19th century.

Acquisition No. 189.

17. Brass bullock-cart; carrying wooden shaped log with a woman sitting on its back; driven by the cart driver sitting on its front part.

Size: $6\frac{1}{2}'' \times 3''$

Jodhpur (Marwar) work; 19th century.

Acquisition No. 191(i).

18. Brass Bullock cart; same as above, but covered on top.

Size: $6\frac{1}{2}'' \times 5''$

Jodhpur (Marwar) work; 19th century.

Acquisition No. 191(ii).

19. Brass dog; Lahori.

Size: $2'' \times 1\frac{1}{2}''$

Jodhpur (Marwar) work; 19th century.

Acquisition No. 913.

20. Brass rabbit (pair).

Size: $2\frac{1}{2}'' \times 2''$

Jodhpur (Marwar) work; 19th century.

Acquisition No. 912.

21. Brass camel; Dholā Mārū on its back.

Size: $4'' \times 2''$

Jodhpur (Marwar) work; 19th century.

Acquisition No. 192(i).

22. Brass camel with warrior on its back, holding a gun and a sword.

Size: $4'' \times 2''$

Jodhpur (Marwar) work; 19th century.

Acquisition No. 192(ii).

23. Brass Gangajālī; enamelled with handle.

Size: Mouth diameter $2\frac{1}{4}''$; Height $5\frac{1}{2}''$

Jodhpur (Marwar) work; 19th century.

Acquisition No. 1273.

24. Brass salver; embossed with astronomical (Jyotish) designs with sun in the centre.

Size: Diameter $36\frac{1}{2}''$

Jodhpur (Marwar) work; 19th century.

Acquisition No. 1136.

STONE SECTION

1. Marble cup; white; having pedestal (pirgi).
Size: 6" long; $3\frac{1}{2}$ " diameter of mouth.
Makarana (Jodhpur) work; modern.
Acquisition No. 1008.
2. Marble Candle stand; white.
Size: $10\frac{1}{2}$ " long.
Makarana (Jodhpur) work; modern.
Acquisition No. 98.
3. Marble ash-tray; white.
Size: 4" diameter.
Makarana (Jodhpur) work; modern.
Acquisition No. 1025.
4. Marble Tea-cup with saucer; white.
Size: $2\frac{1}{2}$ " diameter of cup; $5\frac{1}{2}$ " diameter of saucer.
Makarana (Jodhpur) work; modern.
Acquisition No. 1026.
5. Marble Surāhi; white.
Size: 25" circumference; 11" height.
Makarana (Jodhpur) work; modern.
Acquisition No. 89.
6. Marble octagonal; white.
Size: $5\frac{1}{4}$ "
Makarana (Jodhpur) work; modern.
Acquisition No. 1002.
7. Marble Katordan; white; lid having handle.
Size: 6" diameter; 3" height with lid.
Makarana (Jodhpur) work; modern.
Acquisition No. 84.
8. Marble dish; lotus-shaped; white.
Size: $15\frac{1}{2}$ " diameter.
Makarana (Jodhpur) work; modern.
Acquisition No. 982.
9. Marble Choparā; duck-shaped; white.
Size: $7\frac{1}{2}$ " \times 5"
Makarana (Jodhpur) work; modern.
Acquisition No. 999.

10. Marble loṭāh; white.
Size: 6" diameter; 4" height.
Makarana (Jodhpur) work; modern.
Acquisition No. 98.
11. Marble wine jar (chuski); white; having silver spout.
Size: 5½" high.
Makarana (Jodhpur) work; modern.
Acquisition No. 1004.
12. Marble Choparā; betel-shaped; white, having these compartments inside it.
Makarana (Jodhpur) work; modern.
Acquisition No. 999(ii).
13. Marble (Tunga shell); white.
Size: 9" height; 16½" circumference.
Makarana (Jodhpur) work; modern.
Acquisition No. 1001.
14. Marble Hukkah; complete with pipe and chilam; white.
Size: 12½" high; 7" diameter of the base.
Makarana (Jodhpur) work; modern.
Acquisition No. 56.
15. Marble egg in a cup; oval shaped; white.
Size: Cup 5" × 2½"; Egg 5" circumference.
Makarana (Jodhpur) work; modern.
Acquisition No. 1007.
16. Marble kalasiyā with lid; white; painted in golden colours; four of Jodhpur rulers on its four sides.
Size: 8" high (with lid); 3" diameter of mouth.
Makarana (Jodhpur) work; modern.
Acquisition No. 114.
17. Marble tea cup with saucer; white; painted in golden colours, with floral designs.
Size: 5½" diameter of the saucer; 3" diameter of cup.
Makarana (Jodhpur) work; modern.
Acquisition No. 115.
18. Marble loṭāh; white; painted in golden colours with floral designs and human animal figures.
Size: 5½" height; 4" diameter of the mouth.
Makarana (Jodhpur) work; modern.
Acquisition No. 74.

19. Marble dish; white; painted in golden colours with floral and geometrical designs accompanied with birds.

Size : $13\frac{1}{2}$ " diameter.

Makarana (Jodhpur) work; modern.

Acquisition No. 102.

20. Marble dish; white; painted in golden colours with floral designs having animal figures.

Size : $10\frac{1}{2}$ " diameter.

Makarana (Jodhpur) work; modern.

Acquisition No. 101.

21. Marble pot (Kalasiyā); white; painted in golden colours with floral designs having birds and animals.

Size : 10" height; " diameter of the mouth.

Makarana (Jodhpur) work; modern.

Acquisition No. 60.

22. Marble spouted jug *Rām-sāgar*; white; painted in golden colours with floral designs.

Size : 7" high; 4" diameter of mouth.

Makarana (Jodhpur) work; modern.

Acquisition No. 99.

23. Marble box; octagonal; white; painted in golden colours with figures of Hindu gods and goddesses.

Size : $5\frac{1}{2}$ " diameter.

Makarana (Jodhpur) work; modern.

Acquisition No. 85.

24. Marble tumbler with lid; white; painted in golden colours with floral designs, human and animal figures.

Size : 7" high; $3\frac{1}{2}$ " diameter of mouth.

Makarana (Jodhpur) work; modern.

Acquisition No. 63.

25. Jaisalmer Stone loṭāh; yellow stone.

Size : 5" high; 3" diameter.

Jaisalmer work; 19th century.

Acquisition No. 116.

26. Jaisalmer stone paper weight; brown bichhiya stone; hexcial top.

Size : $3\frac{1}{2}$ " height; $2\frac{1}{2}$ " diameter of base.

Jaisalmer work; 19th century.

Acquisition No. 73.

27. Jaisalmer stone butter cup (Makarana); yellow bichhiya stone.

Size : 4" high; 4" diameter of base.

Jaisalmer work; 19th century.

Acquisition No. 880.

28. Jaisalmer stone salt case; yellow stone.

Size : 5" high.

Jaisalmer work; 19th century.

Acquisition No. 19.

29. Jaisalmer stone dish; with border perforated in interwoven rings.

Size : 8" diameter.

Jaisalmer work; 19th century.

Acquisition No. 1012.

30. Jaisalmer stone cup with saucer; grey bichhiya stone.

Size : 3½" diameter of cup.

Jaisalmer work; 19th century.

Acquisition No. 1026.

31. Jaisalmer stone tumbler with lid; black stone, with bands in golden colour.

Size : 7" high; 3½" diameter of mouth.

Jaisalmer work; 19th century.

Acquisition No. 1016.

32. Jaisalmer stone butter cup (Makarana); dark brown stone.

Size : 5" diameter of mouth.

Jaisalmer work; 19th century.

Acquisition No. 1106.

33. Jaisalmer stone tea cup with saucer; yellow bichhiya stone.

Size : 3½" diameter of mouth; 6½" diameter of saucer.

Jaisalmer work; 19th century.

Acquisition No. 1013.

34. Jaisalmer stone flower stand; yellow stone.

Size : 7½" high; " diameter of mouth.

Jaisalmer work; 19th century.

Acquisition No. 68.

35. Jaisalmer stone cup; grey bichhiya stone.

Size 4½" diameter of mouth; 2½" high.

Jaisalmer work; 19th century.

Acquisition No. 71.

36. Jaisalmer stone ruler; dark brown stone.

Size : 13½" long.

Jaisalmer work; 19th century.

Acquisition No. 72.

37. Jaisalmer stone cup, with bands in golden colours.

Size : $9\frac{1}{2}$ " diameter; 3" high.

Jaisalmer work; 19th century.

Acquisition No. 1017.

38. Jaisalmer stone butter cup (Makkhandān); yellow stone.

Size : $4\frac{1}{2}$ " diameter of mouth; $1\frac{1}{2}$ " high.

Jaisalmer work; 19th century.

Acquisition No. 67.

39. Jaisalmer stone salt case; grey bichhiya stone.

Size : 5" high.

Jaisalmer work; 19th century.

Acquisition No. 117.

40. Jaisalmer stone tasalā (desi plate); yellow stone.

Size : $6\frac{1}{2}$ " diameter.

Jaisalmer work; 19th century.

Acquisition No. 879.

41. Jaisalmer stone butter cup (Makkhandān) with dish; yellow stone.

Size : $4\frac{1}{2}$ " diameter of cup; $6\frac{1}{2}$ " diameter of dish.

Jaisalmer work; 19th century.

Acquisition No. 1014.

42. Jaisalmer stone paper weight; yellow bichhiya stone; square base.

Size : $3" \times 3"$

Jaisalmer work; 19th century.

Acquisition No. 73(ii).

43. Jaisalmer stone dish; yellow bichhiya stone.

Size : $8\frac{1}{2}$ " diameter.

Jaisalmer work; 19th century.

Acquisition No. 1011.

IVORY SECTION

1. Ivory necklace, with rectangular medallions (chankis) and pendant; coloured with circular designs and connected by chains.

Size: 18" including pendant.

Merta (Jodhpur) work; 19th century.

Acquisition No. 9.

2. Ivory comb for male; semi-circular.

Size: $3\frac{1}{2}$ " \times $2\frac{1}{4}$ "

Merta (Jodhpur) work; 19th century.

Acquisition No. 24.

3. Ivory comb for female; rectangular; perforated.

Size: 3" \times 2"

Merta (Jodhpur) work; 19th century.

Acquisition No. 1717.

4. Ivory opium box (tassariva).

Size: $1\frac{1}{4}$ " diameter.

Merta (Jodhpur) work; 19th century.

Acquisition No. 616.

5. Ivory stick; plane lion-faced handle.

Size: 38" long (including handle).

Merta (Jodhpur) work; 19th century.

Acquisition No. 30.

6. Ivory surmādānī; painted with lotus flower.

Size: 3" height.

Merta (Jodhpur) work; 19th century.

Acquisition No. 43.

7. Ivory Cigarette case; perforated.

Size: $3\frac{1}{4}$ " \times $2\frac{1}{4}$ "

Merta (Jodhpur) work; 19th century.

Acquisition No. 19.

8. Ivory jingling bells (Kunkhuniya toy); perforated and painted.

Size: 6" long.

Merta (Jodhpur) Work; 19th century.

Acquisition No. 34.

9. Ivory cup with lid; base and lid perforated.

Size: $3\frac{1}{4}$ " high.

Merta (Jodhpur) work; 19th century.

Acquisition No. 672.

10. Ivory chopar toys; set of 16 pieces; small.

Size: $\frac{1}{2}$ " height of each toy.

Merta (Jodhpur) work; 19th century.

Acquisition No. 36.

11. Ivory chopar toys set; of 16 pieces; big.

Size: $1\frac{1}{2}$ "

Merta (Jodhpur) work; 19th century.

Acquisition No. 36.

12. Ivory chess toys; set of 32.

Size: Diameter of base of toys various from 1" to $1\frac{1}{4}$ ".

Merta (Jodhpur) work; 19th century.

Acquisition No. 22.

13. Ivory pen (Kalam); end fitted with ivory flower.

Size: 7" long.

Merta (Jodhpur) work; 19th century.

Acquisition No. 7.

14. Ivory rose-flower; pink coloured.

Size: $1\frac{1}{2}$ " diameter.

Merta (Jodhpur) work; 19th century.

Acquisition No. 1059.

15. Ivory image of Gaṇeśa; four-handed; sitting on pedestal.

Size: 3" high.

Merta (Jodhpur) work; 19th century.

Acquisition No. 1249.

16. Ivory inkpot, square dirped.

Size: $1\frac{1}{2}$ " \times $1\frac{1}{2}$ "

Merta (Jodhpur) work; 19th century.

Acquisition No. 23.

17. Ivory motar car, old Rollys Royax design, perforated, with two human figures.

Size: 11 " \times $4\frac{1}{2}$ "

Merta (Jodhpur) work; 19th century.

Acquisition No. 12.

18. Ivory model of station and railway train, one engine and two circles.

Size: 25 " \times $10\frac{1}{2}$ "

Merta (Jodhpur) work; 19th century.

Acquisition No. 916.

19. Ivory inlaid cot legs of wood; a set of four.

Size: 18" high.

Merta (Jodhpur) work; 19th century.

Acquisition No. 28.

20. Ivory inlaid perfumary log of wood; rectangular.

Size: $9" \times 6" \times 4\frac{1}{2}"$

Merta (Jodhpur) work; 19th century.

Acquisition No. 35.

21. Ivory inlaid chilaing.

Size: $5\frac{1}{2}" \times 1\frac{1}{2}"$

Merta (Jodhpur) work; 19th century.

Acquisition No. 615.

WOOD SECTION

1. Wooden gatta (Tobacco Box); inlaid with ivory; round shape.
Size: 5" diameter.
Merta (Jodhpur) work; 19th century.
Acquisition No. 964.
2. Wooden cot legs, lacquered; reshmi; a set of four legs.
Size: $19\frac{1}{2}" \times 3"$
Bagri (Jodhpur) work; 19th century.
Acquisition No. 232.
3. Wooden cot legs (sindhi), a set of four legs, four singing girls (with musical instruments) on all four sides.
Size: $12" \times 6"$
Bagri (Jodhpur) work; 19th century.
Acquisition No. 210.
4. Wooden lacquered cot legs; a set of four legs; red reshmi.
Size: $12\frac{1}{2}" \times 1"$
Bagri (Jodhpur) work; 19th century.
Acquisition No. 262.
5. Wooden lacquered choper toys (Gotās); a set of 16 toys; red reshmi.
Size: Each toy $1\frac{1}{2}" \times 1\frac{1}{2}"$
Bagri (Jodhpur) work; 19th century.
Acquisition No. 235.
6. Wooden lacquered chess toys; a set of 32 toys; red reshmi.
Size: Base varies from $1" \times 1\frac{1}{2}"$; Height varies from $2" \times 2\frac{1}{2}"$
Bagri (Jodhpur) work; 19th century.
Acquisition No. 234.
7. Wooden lacquered box; triple (or three) drawers one over the other.
Size: $4\frac{1}{2}" \times 3\frac{1}{2}"$
Bagri (Jodhpur) work; 19th century.
Acquisition No. 223(i).
8. Wooden lacquered native pen (Batarnā).
Size: $8\frac{1}{2}"$
Bagri (Jodhpur) work; 19th century.
Acquisition No. 272.
9. Wooden lacquered box, three drawers one over the other.
Size: $4\frac{1}{2}" \times 3\frac{1}{2}"$
Bagri (Jodhpur) work.
Acquisition No. 223(ii).

10. Wooden lacquered gulābdānī (rose water sprinkler); red reshmi.

Size: $9\frac{1}{2}'' \times 2\frac{1}{4}''$

Bagri (Jodhpur) work; 19th century.

Acquisition No. 727.

11. Wooden lacquered chaklota, red reshmi.

Size: $4\frac{1}{2}'' \times \frac{1}{2}''$

Bagri (Jodhpur) work; 19th century.

Acquisition No. 276(i).

12. Wooden lacquered dish.

Size: 9" diameter.

Bagri (Jodhpur) work; 19th century.

Acquisition No. 230.

13. Wooden lacquered chaklota; red reshmi.

Size: $4\frac{1}{2}'' \times \frac{1}{2}''$

Bagri (Jodhpur) work; 19th century.

Acquisition No. 276(ii).

14. Wooden lacquered kalamdān (Inkstand); red reshmi.

Size: $9\frac{1}{2}'' \times 8\frac{1}{4}''$

Bagri (Jodhpur) work; 19th century.

Acquisition No. 208.

15. Wooden lacquered tumbler; red reshmi.

Size: $4'' \times 2\frac{1}{2}''$

Bagri (Jodhpur) work; 19th century.

Acquisition No. 226.

16. Wooden lacquered tobacco box; red reshmi.

Size: $7\frac{1}{2}'' \times 2\frac{1}{4}''$

Bagri (Jodhpur) work; 19th century.

Acquisition No. 281.

17. Wooden lacquered tumbler with lid; red reshmi.

Size: $4\frac{1}{2}'' \times 2''$

Bagri (Jodhpur) work; 19th century.

Acquisition No. 224.

18. Wooden lacquered bottle; red reshmi.

Size: $11'' \times 2\frac{1}{4}''$

Bagri (Jodhpur) work; 19th century.

Acquisition No. 287.

19. Wooden lacquered chilam (smoking pipe); red reshmi.

Size: $5\frac{1}{2}'' \times 1''$

Bagri (Jodhpur) work; 19th century.

Acquisition No. 277.

20. Wooden lacquered box, two drawers one over the other; circular; red reshmi.

Size: $3\frac{1}{2}'' \times 3\frac{1}{2}''$

Bagri (Jodhpur) work; 19th century.

Acquisition No. 222(i).

21. Wooden lacquered box, two drawers one over the other.

Size: $3\frac{1}{2}'' \times 3\frac{1}{2}''$

Bagri (Jodhpur) work; 19th century.

Acquisition No. 222(ii).

22. Wooden lacquered golā (spherical toy); red reshmi.

Size: $10\frac{1}{2}''$ circumference.

Bagri (Jodhpur) work; 19th century.

Acquisition No. 239.

23. Wooden lacquered bangri toy; red reshmi.

Size: $7\frac{1}{2}''$ diameter.

Bagri (Jodhpur) work.

Acquisition No. 237(i).

24. Wooden lacquered bangri toy; red reshmi.

Size: $7\frac{1}{2}''$ diameter.

Bagri (Jodhpur) work.

Acquisition No. 237(ii).

25. Wooden lacquered ball, red reshmi.

Size: 8"

Bagri (Jodhpur) work; 19th century.

Acquisition No. 24.

26. Wooden lacquered walking stick.

Size: 45" long.

Bagri (Jodhpur) work; 19th century.

Acquisition No. 728.

27. Wooden lacquered electric table-lamp stand; red reshmi.

Size: $11\frac{3}{4}'' \times 5''$

Bagri (Jodhpur) work; 19th century.

Acquisition No. 729.

28. Wooden lacquered kalasiyā; red reshmi.

Size: $3\frac{1}{4}'' \times 1\frac{1}{2}''$

Bagri (Jodhpur) work; 19th century.

Acquisition No. 225(i).

29. Wooden lacquered lotan (stand); red reshmi.

Size: $12\frac{1}{2}''$

Bagri (Jodhpur) work; 19th century.

Acquisition No. 288.

30. Wooden lacquered 'belan'; red reshmi.

Size: $11\frac{1}{4}'' \times 6\frac{1}{4}''$

Bagri (Jodhpur) work; 19th century.

Acquisition No. 284.

31. Wooden lacquered box (katordān); red reshmi.

Size: $7'' \times 3\frac{1}{2}''$

Bagri (Jodhpur) work; 19th century.

Acquisition No. 228.

32. Wooden lacquered Gādwā (Kalasiyā); red reshmi.

Size: $2\frac{1}{2}'' \times 2\frac{1}{4}''$

Bagri (Jodhpur) work; 19th century.

Acquisition No. 225(ii).

33. Wooden lacquered top (toy); red reshmi.

Size: $7\frac{1}{2}'' \times 3''$

Bagri (Jodhpur) work; 19th century.

Acquisition No. 236(i).

34. Wooden lacquered top (toy); red reshmi.

Size: $7\frac{1}{2}'' \times 3\frac{1}{2}''$

Bagri (Jodhpur) work; 19th century.

Acquisition No. 236(ii).

35. Wooden lacquered chakri toy; red reshmi.

Size: $3\frac{1}{2}''$ diameter.

Bagri (Jodhpur) work; 19th century.

Acquisition No. 242.

36. Wooden lacquered fircli toy; reshmi.

Size: $2\frac{1}{2}'' \times 2\frac{1}{4}''$

Bagri (Jodhpur) work; 19th century.

Acquisition No. 242.

37. Wooden lacquered baingan (vegetable).
Size: 5" long.
Bagri (Jodhpur) work; 19th century.
Acquisition No. 269(i).
38. Wooden lacquered baingan (vegetable).
Size: 5"
Bagri (Jodhpur) work; 19th century.
Acquisition No. 269(ii).
39. Wooden lacquered tura stand; red reshmi.
Size: $6\frac{1}{4}" \times 2\frac{1}{2}"$
Bagri (Jodhpur) work; 19th century.
Acquisition No. 282.
40. Wooden lacquered kharbūjā (fruit) toy.
Size: $9\frac{1}{2}"$ diameter.
Bagri (Jodhpur) work; 19th century.
Acquisition No. 273.
41. Wooden lacquered cup with lid.
Size: $4\frac{1}{4}" \times 2\frac{1}{2}"$
Bagri (Jodhpur) work; 19th century.
Acquisition No. 279.
42. Wooden lacquered sitāfal (fruit) toy.
Size: $9\frac{1}{4}"$ diameter.
Bagri (Jodhpur) work; 19th century.
Acquisition No. 274.
43. Wooden lacquered long gatta for keeping tobacco.
Size: $8\frac{1}{2}" \times 4\frac{1}{4}"$
Bagri (Jodhpur) work; 19th century.
Acquisition No. 762.
44. Wooden box, fruit-shaped.
Size: $12\frac{1}{2}" \times 3"$
Bagri (Jodhpur) work; 19th century.
Acquisition No. 971.
45. Wooden lacquered katordān (Box); red reshmi.
Size: $8\frac{1}{2}" \times 3"$
Bagri (Jodhpur) work; 19th century.
Acquisition No. 227.

46. Wooden lacquered box; red reshami.
Size: $5'' \times 2\frac{1}{2}''$
Bagri (Jodhpur) work; 19th century.
Acquisition No. 223.
47. Wooden mango fruit green (keri).
Size: $7'' \times 3\frac{1}{2}''$
Bagri (Jodhpur) work; 19th century.
Acquisition No. 267.
48. Wooden lacquered kalasiyā; red reshami.
Size: $2\frac{1}{2}'' \times 2''$
Bagri (Jodhpur) work; 19th century.
Acquisition No. 225.
49. Wooden lacquered hukkā; coconut-shaped; black.
Size: $12\frac{1}{2}'' \times 9''$
Bagri (Jodhpur) work; 19th century.
Acquisition No. 266.
50. Wooden lacquered perfumery (Itadān) stand; red reshami.
Size: $5'' \times 4\frac{1}{2}''$
Bagri (Jodhpur) work; 19th century.
Acquisition No. 761.
51. Wooden lacquered cup with lid.
Size: $6'' \times 2''$
Bagri (Jodhpur) work; 19th century.
Acquisition No. 279.
52. Wooden camel girban (nakeli).
Size: $2\frac{3}{4}'' \times 1\frac{1}{2}''$
Jodhpur work; modern.
Acquisition No. 203.
53. Wooden pātra used by Jain saints.
Size: $5'' \times 2\frac{1}{2}''$
Jodhpur work; 19th century.
Acquisition No. 219.
54. Rohira wood chilam (smoking pipe).
Size: $5\frac{1}{4}'' \times 1\frac{1}{4}''$
Jodhpur work; modern.
Acquisition No. 216.

55. Rohira wood tumbā (used by hindu saint for water).

Size: $6\frac{1}{4}'' \times 4\frac{1}{4}''$

Jodhpur work; modern.

Acquisition No. 214.

56. Pohira wood pātra (utensil used by jains).

Size: $7\frac{1}{2}'' \times 3''$

Jodhpur work; modern.

Acquisition No. 219.

57. Rohira wood cup with stand.

Size: $4\frac{3}{4}'' \times 2\frac{1}{2}''$

Jodhpur work; modern.

Acquisition No. 726.

58. Rohira wood tumbler.

Size: $4\frac{3}{4}'' \times 3\frac{1}{2}''$

Jodhpur work; modern.

Acquisition No. 211.

59. Rohira wood lotāh.

Size: $5'' \times 4\frac{1}{2}''$

Jodhpur work; modern.

Acquisition No. 218.

60. Rohira wood cup medium.

Size: $5'' \times 2\frac{1}{2}''$

Jodhpur work; modern.

Acquisition No. 212.

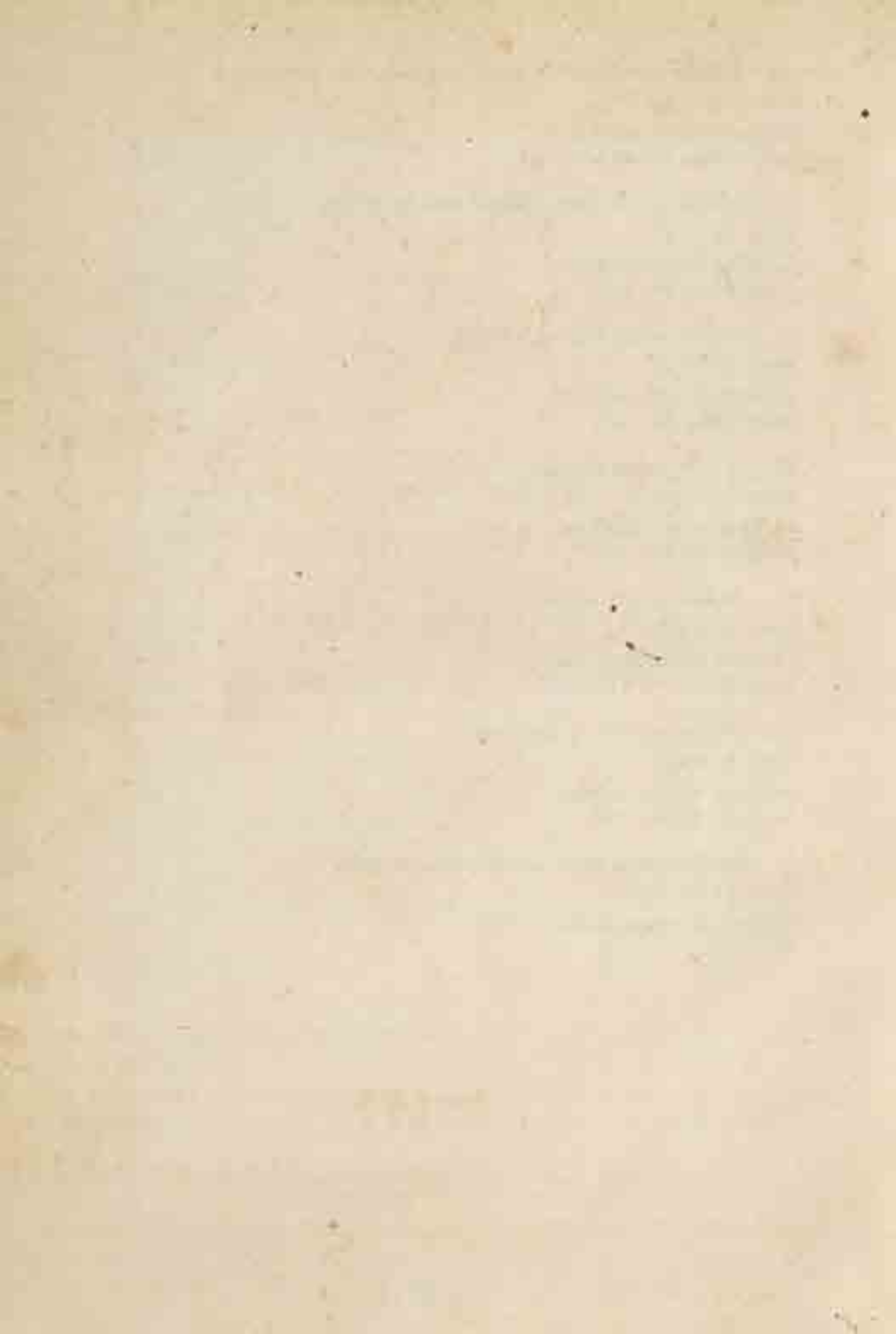
61. Rohira wood pipes (Nafriyan) one pair.

Size: $11\frac{1}{4}'' \times 2\frac{3}{4}''$

Jodhpur work; modern.

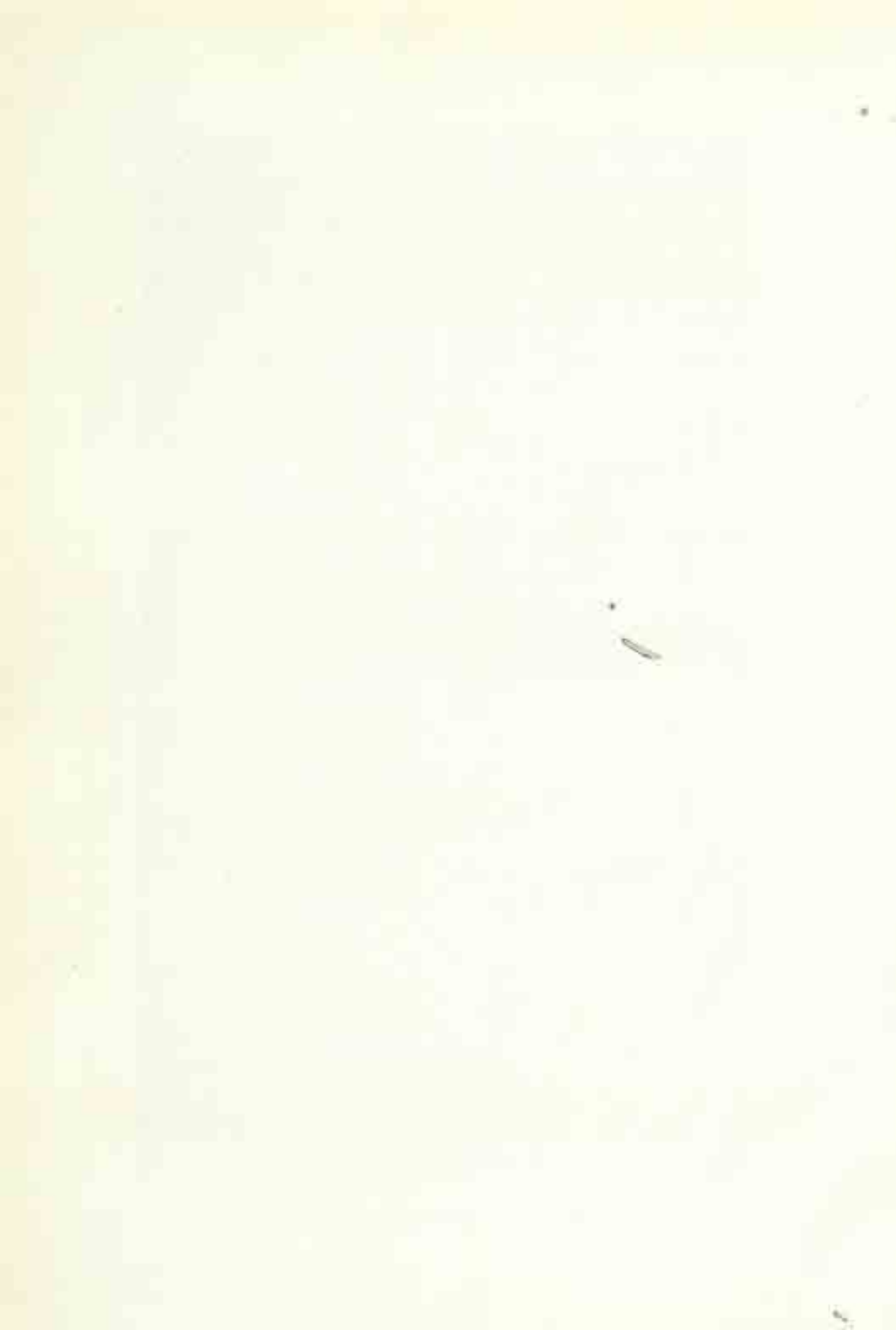
Acquisition No. 215.

36457



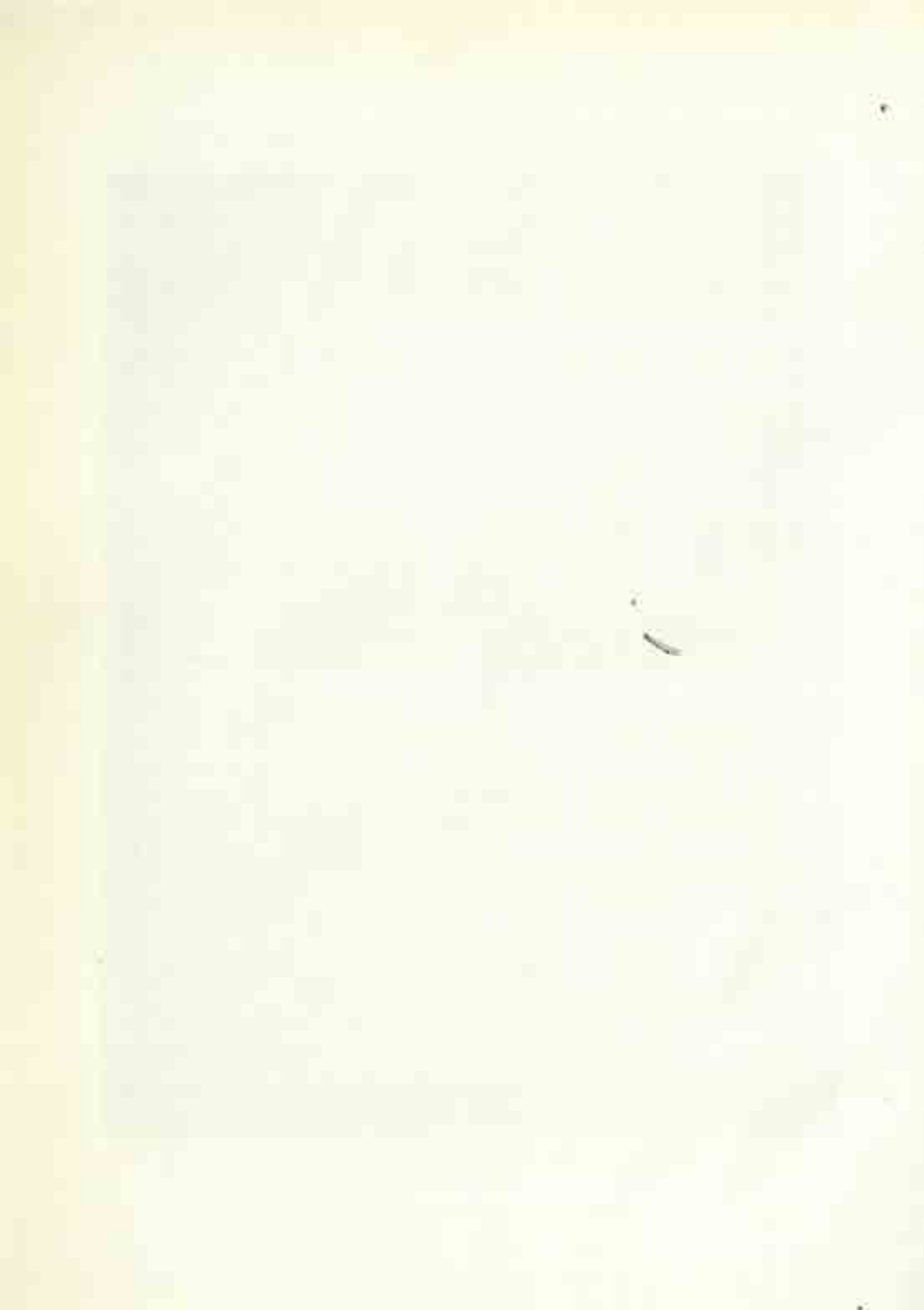


Part of a pillar containing a bird ornamentation—Kīradu, 12th century, A.D.





A flute player and a female in singing pose—Kiradu, 12th century, A.D.

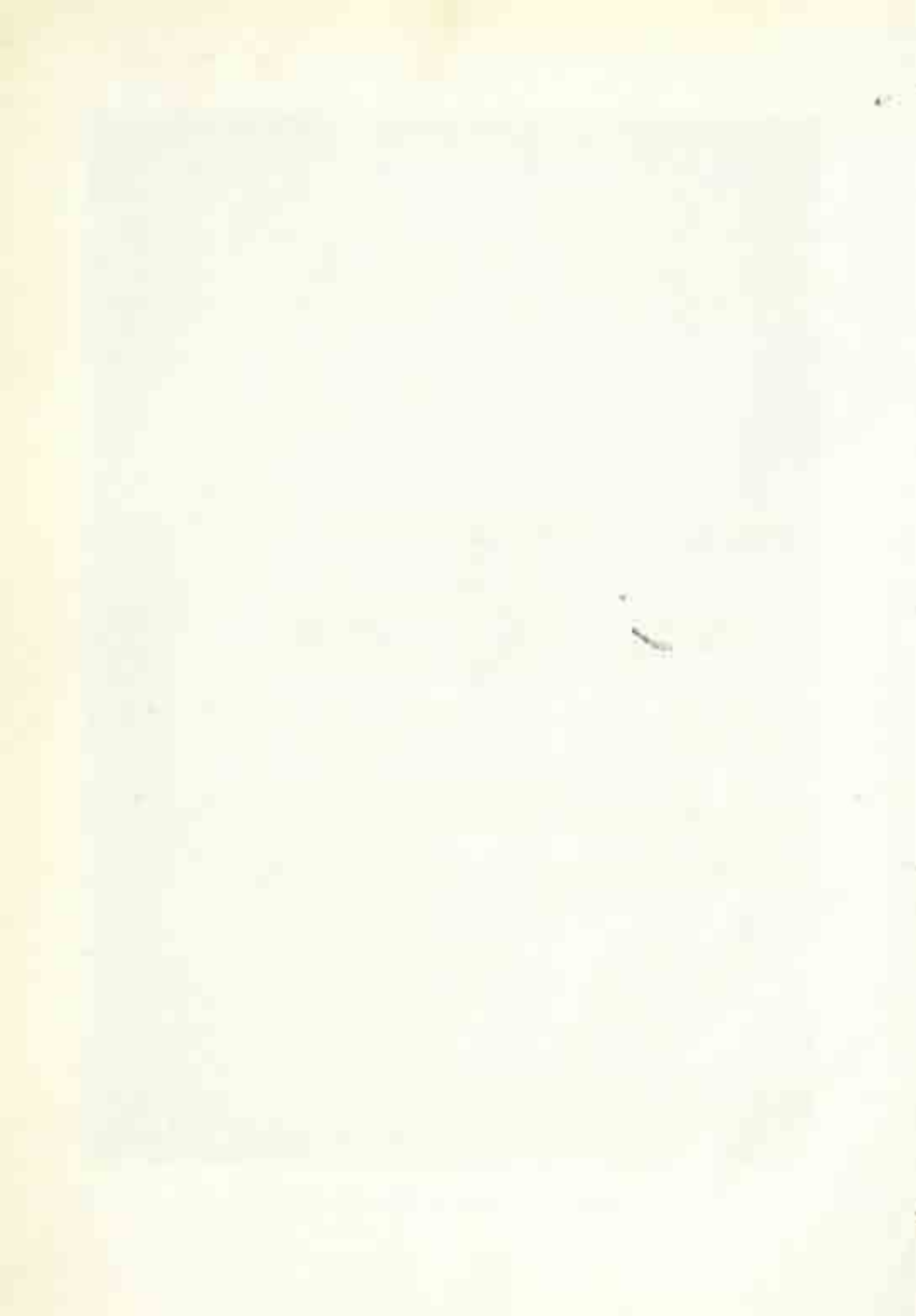




A female Bust—Kiradu, 12th century, A.D.

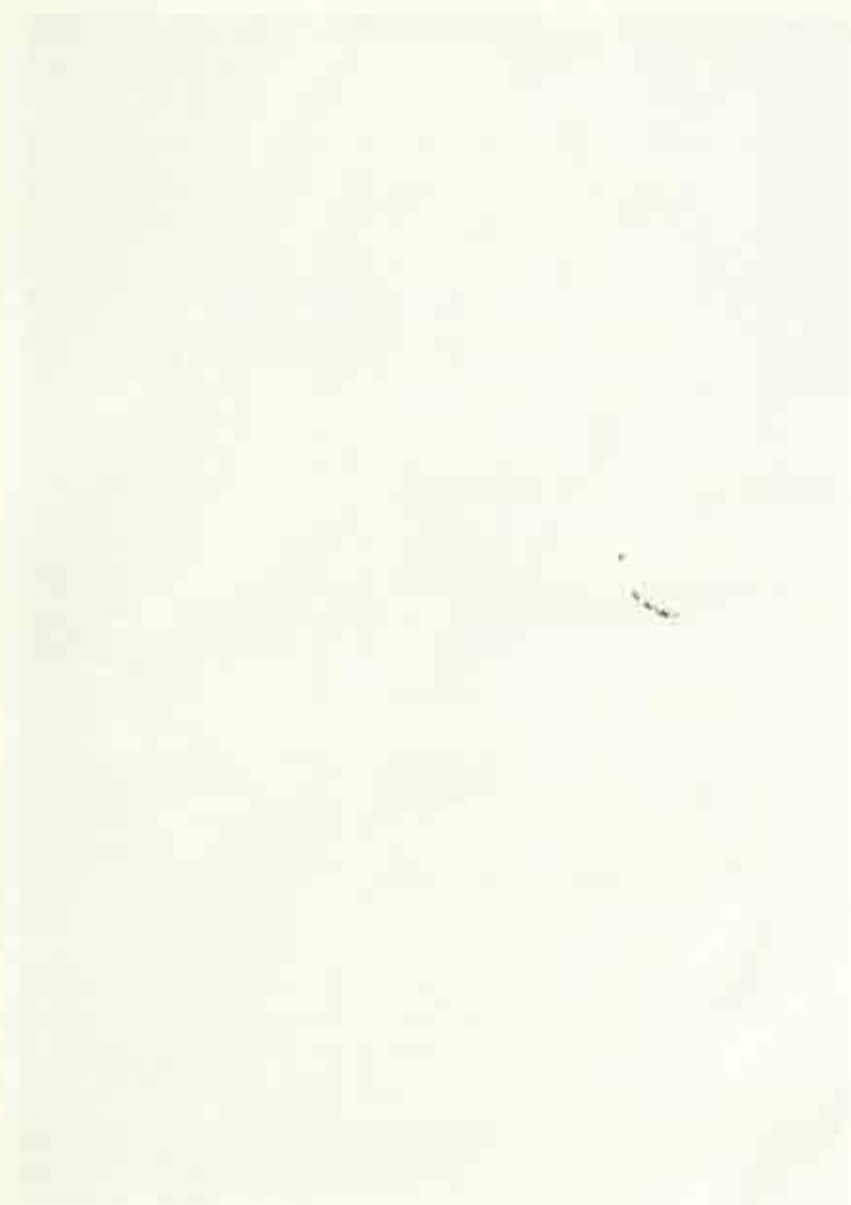


A female Bust—Kiradu, 12th century, A.D.



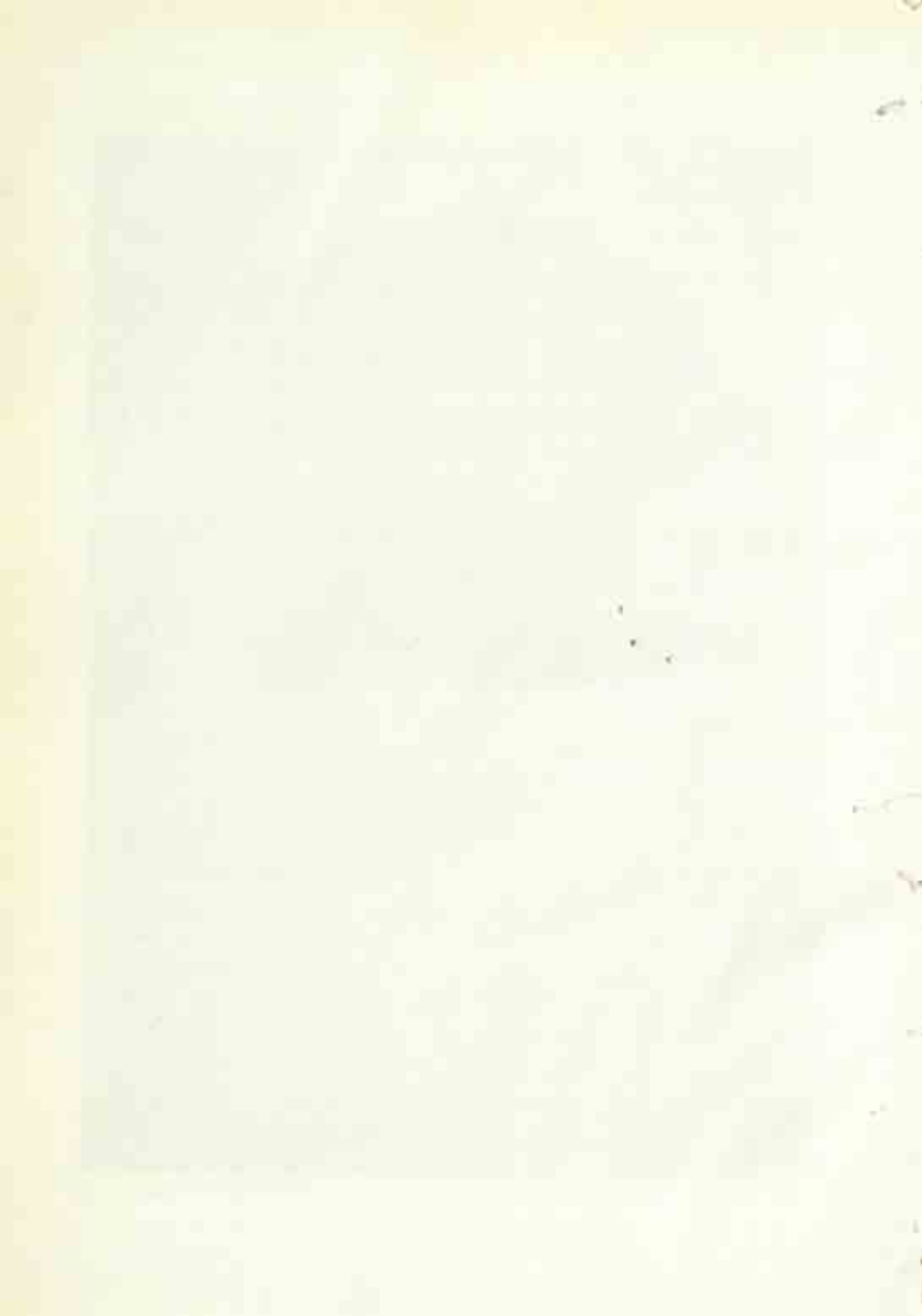


A female torso—Kiradu, 12th century, A.D.



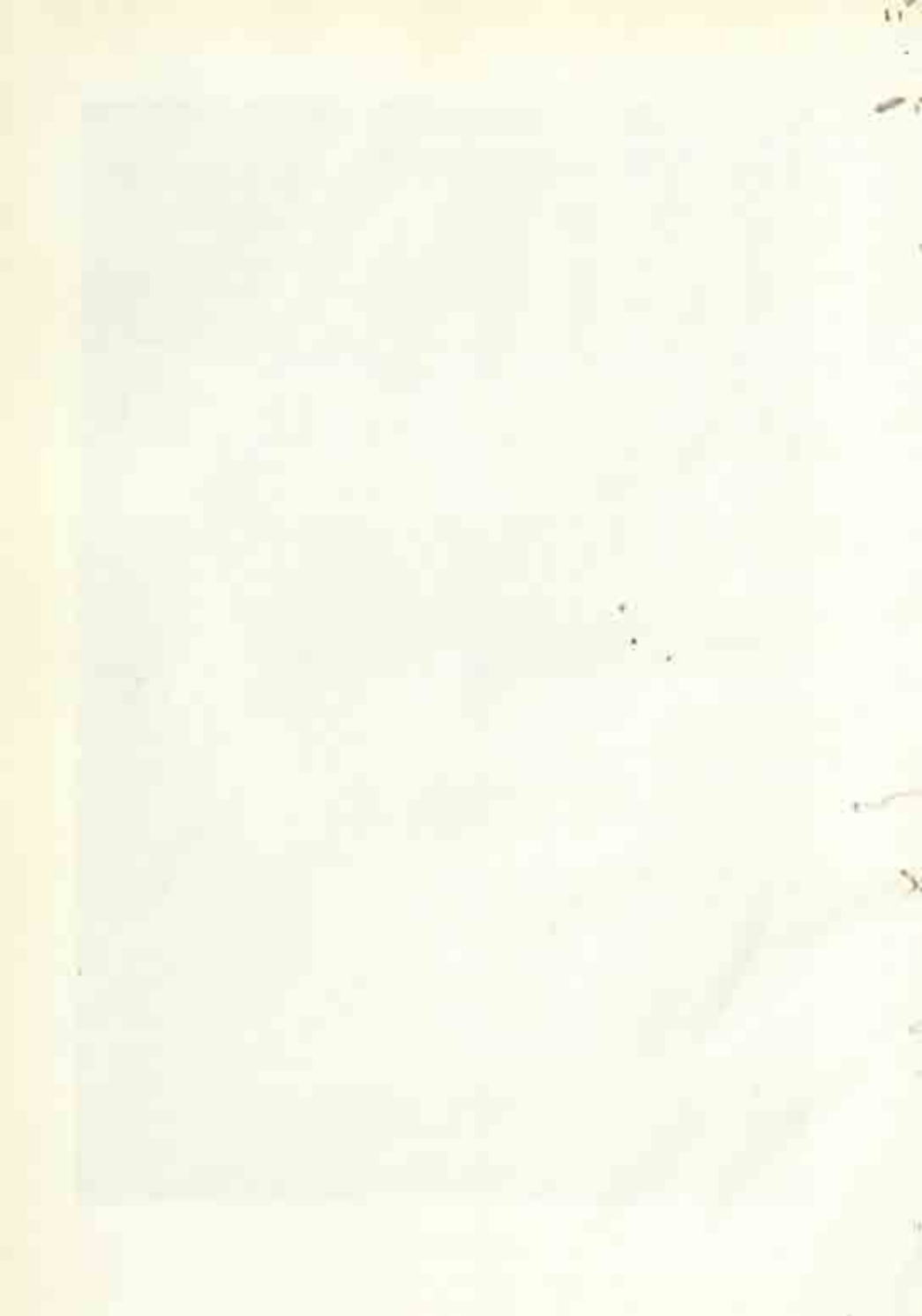


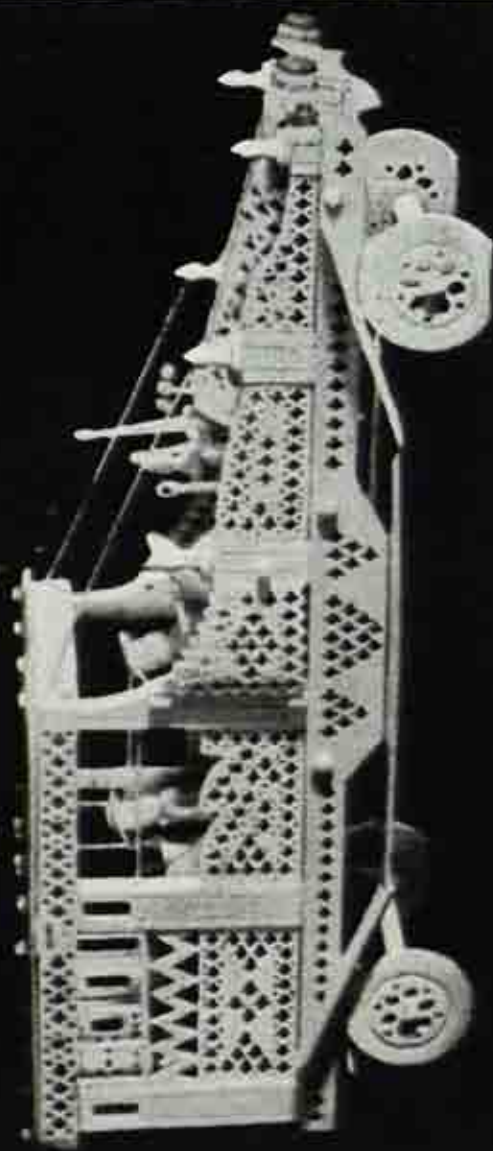
Yoganarayana (Didwana)





A necklace of ivory





An old motor car of ivory

11



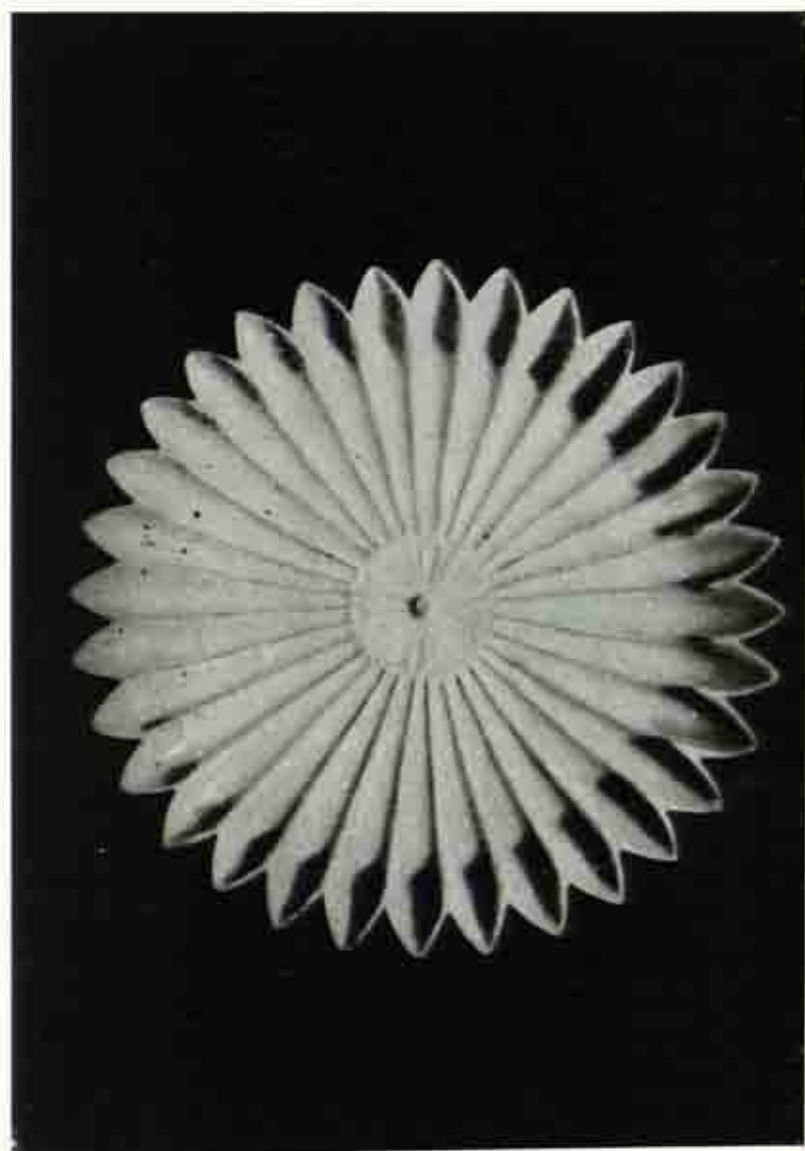
12

13

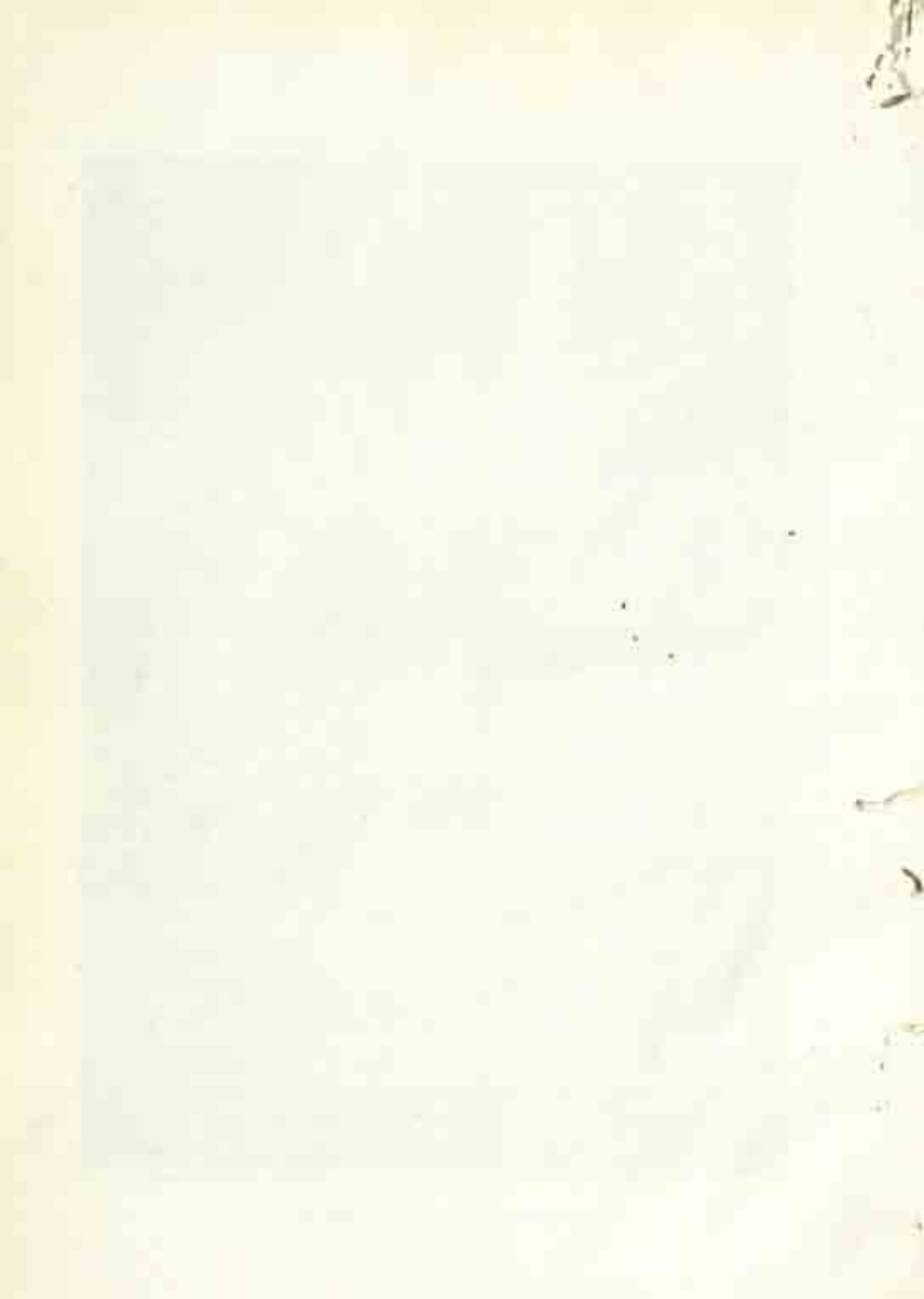
14

15

16

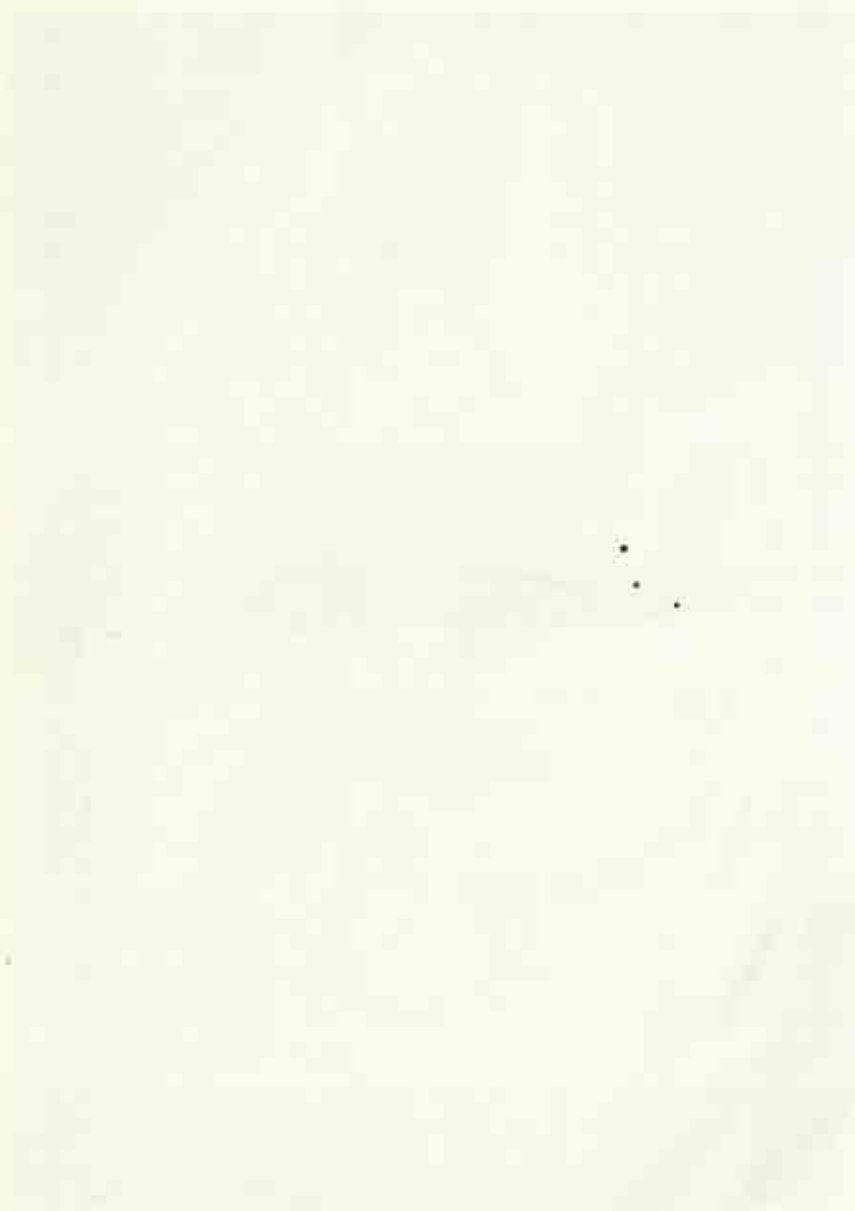


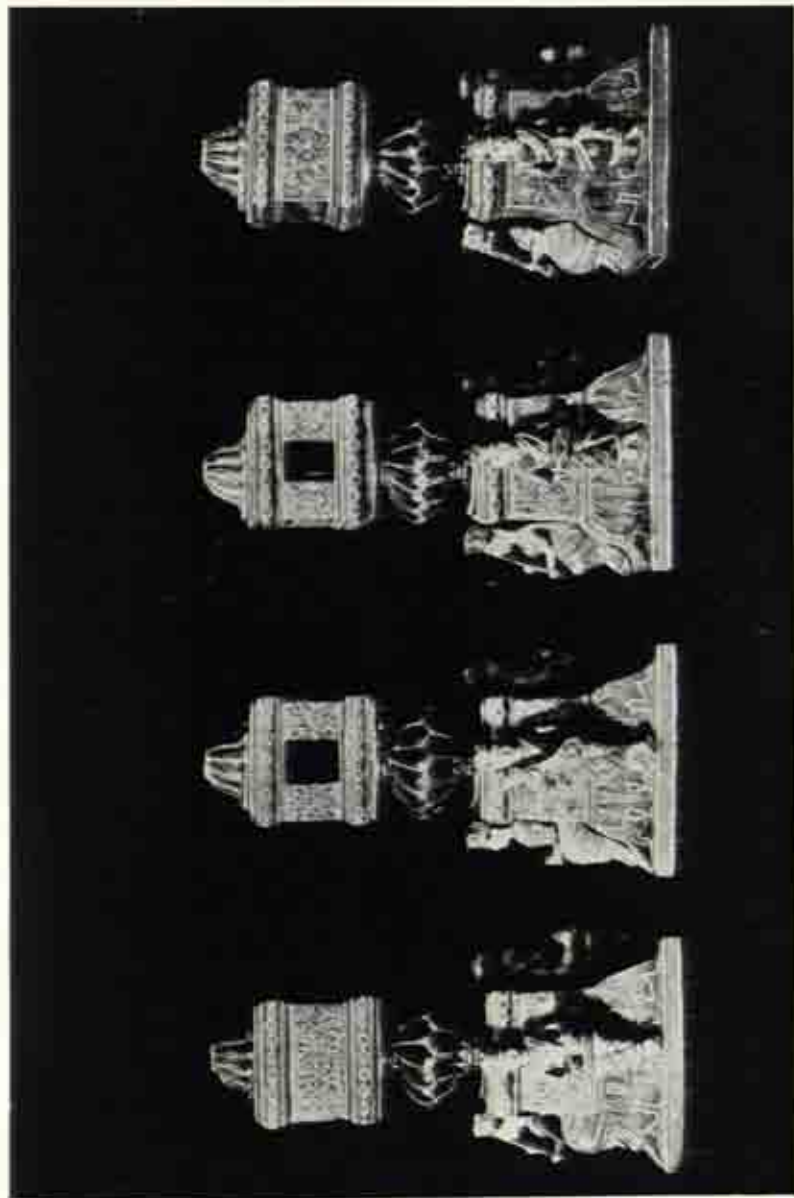
A lotus shaped dish of Marble





Leather work





Ornamented legs of a cot



Tie & dye work of Jodhpur





Cal-
N^o 4/3/75

"A book that is shut is but a block"

CENTRAL ARCHAEOLOGICAL LIBRARY
GOVT. OF INDIA
Department of Archaeology
NEW DELHI

Please help us to keep the book
clean and moving.
