



AS-002023 CSL

1290
7
4
CATALOGUE

OF THE

COINS OF THE INDIAN MUSEUM

BY

CHAS. J. RODGERS, M.R.A.S., M.N.S.

HONORARY NUMISMATIST TO THE GOVERNMENT OF INDIA, FELLOW OF THE
UNIVERSITY OF THE PUNJAB, AND ASSOCIATE MEMBER OF THE
ASIATIC SOCIETY OF BENGAL.

PART III.

ANCIENT COINS OF INDIA; MEDIEVAL COINS OF INDIA;
MISCELLANEOUS NORTH-INDIAN COINS; AND
MISCELLANEOUS SOUTH-INDIAN COINS.



CALCUTTA:

PRINTED BY ORDER OF THE TRUSTEES OF THE INDIAN MUSEUM.
1895.

1290
281



CSL

CATALOGUE

2

OF THE

COINS OF THE INDIAN MUSEUM

BY

CHAS. J. RODGERS, M.R.A.S., M.N.S.,
HONORARY NUMISMATIST TO THE GOVERNMENT OF INDIA, FELLOW OF THE
UNIVERSITY OF THE PUNJAB, AND ASSOCIATE MEMBER OF THE
ASIATIC SOCIETY OF BENGAL.

PART III.

ANCIENT COINS OF INDIA; MEDIAEVAL COINS OF INDIA;
MISCELLANEOUS NORTH-INDIAN COINS; AND
MISCELLANEOUS SOUTH-INDIAN COINS.



CALCUTTA:

PRINTED BY ORDER OF THE TRUSTEES OF THE INDIAN MUSEUM.
1895.



CSL

— 54

737.5954

R-71 C ROD-C
Pl. 3

CALCUTTA:—PRINTED AT THE BAPTIST MISSION PRESS.

20499





CSL

3


Page 1

CONTENTS.

	Page		Page
Coins of India	... 1	Miscellaneous South-Indian Coins ...	127
1 Coins of India	... 71	Appendices	... 145
eous North-Indian Coins...	101	Explanation of Plates	... 151

112

115



ERRATA ET CORRIGENDA.

- Page 11 In the page-heading for "Mitra " read " Kuninda."
- " 78 For Coin 3399 of Dikshema Gupta read 13399.
- " 87 Coin 7803 for वल्ल read वल्ल.
- " 102 For " Kutári ka Paise " read " Kutári ke paise."
- " " For " Chambá " read " Chamba."
- " 109 Coins 7710 ff. for बीबी read throughout बीबी.
- " 110 Coin 7711 for सिंघस्याणा read सिंघस्या भा.
- " " Coin 7712 for " SIMHA " read " SIMHA."
- " " Coin 7713 for PRAMÁTHES'VARÍ, read PRAMATHES'VARÍ.
- " " Coin 7714 for उदल read नदल.
- " 112 Coin 11833 for जेधरासिंह read जेधरसिंह.
- " 115 For " BHARATA " read " BHARATHA."
- " " Coin 11857 for कलौदरबीम read कुलीदुवबीम.
- " 116 Coin 7757 for " Rám, Ganga " read " Rám Ganga."
-



5

CSL

ANCIENT COINS OF INDIA

ANCIENT COINS OF INDIA.

	Page.
Punch Marked Coins ...	3
Kuninda Coins ...	9
Mitra Coins ...	12
Indistinct and Unassigned ...	14
Malava Coins ...	15
Ujain Coins ...	27
Kosambi Coin ...	28
Coins with Inscriptions ...	29
Chaitya and Elephant ...	38
Chaitya and Lion ...	41
Chaitya and Tree ...	43
Chaitya and Horse or Bull ...	44
Elephant and Horse ...	<i>ib.</i>
Elephant and Lion ...	45
Miscellaneous ...	<i>ib.</i>
Yaudheya Coins ...	57
Western Kshatrapas ...	59
Gupta Coins ...	61
Coins allied to Guptas ...	65
Kedara Coins ...	66
Unassigned ...	68



COINS OF ANCIENT INDIA.

PUNCH MARKED COINS.

7529 S. 52.0 0.6 ×.45 oblong.	Chaitya, &c.	In incuse circle two spear heads and two crescents.
7530 S. 52.0 0.65 ×.45	Marked all over.	Three slight marks.
7531 S. 52.8 0.6 ×.55 oval.	Chaitya, tree, sun, &c.	As on 7529.
7532 S. 54.8 0.55 ×.5 oblong.	Horseman, chaitya, three arrow heads, and three arrow heads inverted, joined alternately to a small circle, &c.	As on 7529.
7533 S. 53.3 0.65 ×.55 oblong.	Chaitya, wheel and elephant. One corner cut off.	As on 7529.



COINS OF ANCIENT INDIA.

CSL

7534 S. 56.2 0.69 x .45 oblong.	Many marks of kinds.	As on 7529.
7535 S. 54.0 0.5 square.	Sun, chaitya, &c.	As on 7529, slightly marked.
7536 S. 54.0 0.6 x .45 oblong.	2 figures of men, other marks in- distinct.	As on 7529.
7537 S. 51.0 0.7 x .5	Tree, sun, chaitya, &c., mixed up.	do.
7538 S. 55.0 0.55 square.	Chaitya, tree, elephant, sun, &c.	do.
7539 S. 54.0 0.52 square.	Deer, chaitya, &c., &c.	do.
7540 S. 53.0 0.7 x .5	A lot of marks mixed up.	do. Slight.
7541 S. 53.0 0.5 x .45	Sun, chaitya, &c.	Three marks, slight.



PUNCH MARKED COINS.

CSL⁵

7542 S. 55.0 0.6 x .46	Elephant, sun, chaitya, &c.	As on 7529.
7543 S. 56.0 0.6 x .5	Tree, deer, sun, &c.	do.
7544 S. 52.5 0.7 x .45	3 human figures in a row, &c.	Horse, very small.
7545 S. 53.5 0.6 x .5	Deer, sun, chaitya, &c.	As on 7529.
7546 S. 53.5 0.5 x .45 oval.	Elephant, sun, &c.	One small mark.
7547 S. 50.0 0.75 x .65 oval.	Elephant, bull, sun, &c.	Blank.
7548 S. 52.3 0.62 x .45	Many marks mixed up.	Chaitya.
7698 S. 53.0 0.55 square	Chaitya, tree, animal, &c., mixed up.	One punch mark like an axe head.



COINS OF ANCIENT INDIA.

CSL

7699 S. 53.0 0.66 round.	Sun, snake, &c., jumbled.	Quite blank.
7700 S. 52.0 0.55 ×.4 oblong.	Sun, bale of cloth, &c., mixed up.	Blank.
9984 S. 48.0 0.55 ×.45	Variety of punch marks.	In incuse, mark like a bale of cloth.
9985 S. 40.0 0.56 square.	With one corner cut off. Variety of marks.	Mark like a caduceus.
9986 S. 46.0 0.45 square.	With one corner cut off. Variety of marks.	One mark only.
9987 S. 47.5 0.45 square.	Variety of marks.	As on 9985.
10014 S. 42.5 0.6 ×.5 oblong.	Two corners rounded. Five different marks.	Two punch marks.
13200 S. 48.0 0.45	Various punch marks.	Blank.



PUNCH MARKED COINS.

CSL
7

13351 S. 49·0 0·46 square.	Various punch marks.	Blank.
8278 S. 52·6 0·6	Chaitya, sun, and other marks.	Chaitya in incuse.
8277 S. 52·0 0·65 x·5 oblong.	Chaitya, sun, quadruped, 3 spoked wheel, &c., mixed up.	3 dots in incuse.
12374 S. 47·0 0·6 square.	Chaitya, sun; circle with spear heads and taurus marks going round it; image of a man, plumed, with a stick in l. hand, and the bale mark.	In incuse only the bale marks.
7702 C. 42·0 0·68 x·45 oblong.	Punch marked.	Almost blank.
10015 C. 64·0 0·65 x·6	Humped bull moving to left, and four crescents round a circle.	Blank.
10016 C. 75·0 0·65 x·55	Uncertain punch marks.	do.
12744 C. 49·0 0·46 square.	Various punch marks.	Punched.



COINS OF ANCIENT INDIA.

CSL

8310 C. 82.0 0.6 square.	Sun, &c.	Blank.
8299 C. 68.0 0.55 square.	As on 10015.	do.
8301 C. 61.0 0.6 x .46 oblong.	A quadruped to left.	do.
8303 C. 63.0 0.5 square.	do.	do.
8304 C. 42.0 0.52 a broken square.	do. and perhaps a human figure.	do.
8307 C. 37.0 0.55 x .35	A quadruped to left.	do.
12378 C. 3 coins, average 49.6 0.6	Tree, sun, man, circle with spear heads and taurus mark alternat- ing.	Bale mark.



KUNINDA MARKED COINS.

CSL

12379	C. Bird, man, circle with spear heads and taurus marks.	One reverse has the bale mark ; another has a cross with the taurus mark in each angle.
2 coins,		
average		
25.5		
0.5		
12380	C. Tree ; rest of marks deleted.	Bale mark.
44.0		
0.48		
12381	C. Punch marks deleted.	Four circles joined by lines at right angles to each other. Each circle has a taurus mark in it.
24.0	(Probably a coin of Ujain).	
0.42		
8345	C. Punched just a little.	Blank.
19.0		
0.35		
square.		

KUNINDA COINS.

12698	C. Deer, to r., with woman attendant who holds a lotus over deer's head.	In circle;—a tree, snake chaitya, tri-ratna, swástika and ✽. Round the coin, in Bactrian Páli the same inscription as on the obverse.
85.0	Over the hind quarters of the deer is a peculiar symbol. Round the coin in Indian Páli, " <i>Rajña Kunindasa Amughabhutasa Maharajasa.</i> "	
0.94		
12699	C. Poor, only a few letters of legend.	No margin, as above.
49.0		
0.75		
12700	C. do. do.	do. do.
58.0		
0.7		
12701	C. do. do. Under deer, a wheel.	do. do.
46.6		
0.7		



COINS OF ANCIENT INDIA.

CSL

12702	Poor, only a few letters of legend. Top of letters cut.		No margin, as above.
C.			
35.0			
0.65			
12703	do.	do.	do. do.
C.			
35.0			
0.65			
12704	do.	do.	do. do. Good.
C.			
48.0			
0.75			
12705	do.	do. Worn.	do. do. Worn.
C.			
38.0			
0.71			
12706	do.	No legend, two coins.	do. do. Poor.
C.			
36.0			
0.65			
and			
32.5			
0.6			
12707	Very poor; only four letters of legend.		do. do. Very poor.
C.			
32.0			
0.7			
12708	do.		do. do. do.
C.			
28.5			
0.65			
12709	Poor, but as far as <i>Amu</i> of legend legible.		do. Full.
C.			
27.0			
0.6			
12710	As on 12698, poor.		do. Poor.
C.			
27.0			
0.65			



MITRA COINS.

CSL

12711	C. As on 12698, poor. <i>Rajña Ku....</i>	No margin, poor.
27·0		
0·7		
12712	do. Few letters legible.	do. do.
C.		Tree upside down.
28·0		
0·65		
12713	do. No letters.	do. do.
C.		
15·6		
0·55		
12714	do. do.	As on 12698.
C.		
177·0		
0·95		
(Brass).		
8859	do. do.	do.
C.		
67·0		
0·75		
9030	do. <i>Maharajasa</i> , only.	do. In a dotted circle.
C.		
87·0		
0·8		
8753	do. No legend.	do.
C.		
40·0		
0·7		
12735	Remains of deer only.	Only snake, taurus sign and M. 2 and remains of letters.
C.		
29·0		
0·6		



MITRA COINS.

INDRA MITRA.

12369	In incuse square, three symbols, below	Man seated on some object or standing
C.	which <i>Ida matrasi</i> .	behind it and stretching out r. hand.
81.0		
0.65		
12370	In incuse square, three symbols, below	As on 12369.
C.	which the name on 12369, <i>Ida</i>	
45.5	<i>matrasi</i> .	
0.6		
8214	do.	do.
C.		
67.5		
0.6		
8386	do. Legend indistinct.	do. Indistinct.
C.		
40.0		
0.5		
8213	do. do.	Deleted.
C.		
51.5		
0.6		
8212	do. do.	do.
C.		
88.0		
0.65		

AGNI MITRA.

10018	In incuse square, three symbols, below	Figure standing, with a canopy of five
C.	which <i>Agi matrasi</i> .	cobras over it.
77.0		
0.61		
8387	do.	do.
C.		
124.0		
0.8		

8376	C.	Symbols indistinct, no letters.	Figure standing, with a canopy of five cobras over it.
116.0			
0.89			

ATRI MITRA.

8377	C.	In incuse square, three symbols indistinct below which <i>Atri matrasi</i> .	Not plain.
106.0			
0.8			

BHUMI MITRA.

8388	C.	In incuse square, three symbols indistinct, and under them, <i>Bhumi matrasi</i> .	Indistinct.
88.0			
0.83			

DHRUVA MITRA.

12368	C.	In incuse square, three symbols, below which <i>Dhava matrasi</i> . Letters, not all plain.	An image in an enclosure open at the top.
85.0			
0.65			

VIJAYA MITRA.

10017	C.	Humped bull to l., under it (<i>Vi</i>) <i>jaya matrasi</i> , first letter omitted. (See A. C. I., Pl. IX, fig. 17).	Blank.
35.0			
0.55			
12371	C.	Humped bull to l., but only m of legend left.	A crested bird.
38.0			
0.5			



INDISTINCT AND UNASSIGNED.

8382 C. 32.0 0.45	In incuse square, symbols above and below <i>Mitrasa</i> . Name, of two letters gone.	Image, with a bullet head.
8379 C. 26.8 3.45	In incuse square, everything indistinct.	Obliterated.
8380 C. 14.0 0.35	do. do.	do.
8384 C. 48.0 0.55	do. do.	do.
8381 C. 127.0 0.85	In incuse, an image crowned, standing on a pedestal and holding club on r. shoulder. No symbols. No name.	Blank. Metal in flakes.
8391 C. 16.5 0.45	In incuse square, everything eaten away out of it.	Remains of an image.
8392 C. 91.0 0.7	Humped bull to l.	Plain.
8393 C. 119.0 0.75	do.	Indistinct object.
8394 C. 81.0 0.6	do.	Blank.



MALAVA COINS.

CSL

8395		
C.	Humped bull to l.	Blank.
34·0		
0·45		
12741		do.
Brass	Image, and <i>Matrasa</i> .	
111·0		
0·7		
12742		do.
Brass	do. do.	
111·0		
0·75		

MALAVA COINS.*

12388		
C.	Sun and M. 3, below which <i>Mala-</i>	Wheel, and to r. above <i>ya</i> .
7·0	<i>vana</i> .	
0·6		
×·45		
oblong.		
12389		
C.	Tree in railings, to l. <i>ja</i> ; to r.	Indistinct.
10·5	<i>ya</i> below <i>Mālavāná</i> .	
0·5		
irregular.		
12390		
C.	Tree in railings, to r. <i>yama</i> .	Snake, above which M. 4 and orna-
10·0		ments.
0·4		
12391		
C.	Tree in railings, on one to l. <i>ja</i>	On one, a snake. The other is deleted.
2 coins.	to r. of tree <i>ya</i> , on the other	
average	the same, and below <i>lavāná</i> .	
28·0		
0·66		
& 0·6		

* For an account of the discovery of these coins see Archaeological Survey Reports, Vol. VI, pp. 165-184.



ANCIENT COINS OF INDIA.

CSL

12392	C. One, inscription in two lines—lower 6.25 one <i>laváná</i> ; upper one <i>jaya</i> is cut. 1.3 The other coin has <i>lava</i> only.	In both coins, everything rubbed off.
12393	C. In upper line <i>jaya</i> , in lower <i>laváná</i> . 4.0 0.32 broken.	Deleted.
12394	C. Inscription in two lines. One coin 2 coins has <i>vana</i> and the other <i>lava</i> , rest average deleted. 12.5 0.42	do.
12395	C. Inscription much worn in two lines, 22.25 <i>ya</i> 0.55 <i>laváná</i> .	do.
12396	C. As on 12391. 14.0 0.55	do.
12397	C. Tree in railings, below which 23.5 <i>chha</i> 0.5 <i>málavá</i> .	Corroded.
12398	C. In incuse circle a tree, round which 15.0 <i>bhapaghana</i> . 0.4 square.	do.



12399

C. Tree in railings, below which *Má-*
11·0 *lavá*.
0·45

Snake, below which M. 4.

*12400

C. In incuse area *Malavana jaya*.
5 coins
average
10·83
0·35
×·3
oblong.

Humped bull to l. standing.

*12401

C. do.
3 coins
average
10·0
0·35
×·3
oblong.

do.

12402

C. *Málavána jaya*.
5·0
0·35

do.

12403

C. In incuse area *Jaya malavá*.
13·0
0·35

Indistinct.

12404

C. (*Ja*)*ya ma*.
8·0
0·3

Bull to l., very indistinct.

* [On these coins see General Sir A. Cunningham's *Archaeological Survey Reports*, Vol. VI, p. 183. I read *Málaváhna jaya*, with Prákrit genitive plural of *Málava*. R. Hoernle.]



ANCIENT COINS OF INDIA.

CSL

12405	C. 2 coins average 6.0 0.26 square.	Tree in railings, in middle of coin : to l. <i>Malava</i> , to r. <i>na jaya</i> .	Lion to r, in dotted square.
12406	C. 6.0 0.26 square.	do.	do.
12407	C. 3.5 0.32 ×.25	Tree, with fragmentary inscriptions.	Lion, to l.
*12408	C. 2 coins average 10.0 0.4	Tree, as on 12405, with full inscription :— <i>Málavá</i> <i>na jaya</i> .	Humped bull, couchant to r., in dotted circle.
12409	C. 4 coins average 7.2 0.45	do.	do.
12410	C. 3 coins average 7.5 0.4	do.	do. but bull standing.
12411	C. 2 coins average 9.75 0.4	do.	Humped bull, seated to l.

* [On one of them the legend is reversed :—*Valama jaya na*. R. Hoernle.]

12412	C. Tree, as on 12405, with full inscriptions. 5 coins average 7.57 0.4	Bull to r., in four coins, standing; in three, sitting.
12413	C. Tree only. 4.0 0.25	Lion to l., standing.
12414	C. Tree only, with double stem: on broken coin, with one stem only. 3 coins one broken average 3.3 0.25	Bull to l., standing.
12415	C. Concave. Inscription round the coin:— <i>Jaya malavana</i> . 3.0 0.28	Humped bull to r.
12416	C. Object in centre uncertain; round it <i>Malavana jaya</i> . 8.0 0.32	Deleted.
12417	C. As on 12415, with no central object. 2 coins average 4.0 0.3 & 0.25	Corroded.
12418	C. As on 12417. 3 coins average 3.25 0.25	A Humped bull scarcely recognizable.



12419

C.
5 coins
average
5.1
0.3

Inscription in two lines
--- *lava*
jaya.

Signs of some animal.

12420

C.
3.0
0.25

Tree and *jaya* (last letter upside
down).

A cat to l.

12386

C.
31.5
0.45

Jaya.

Blank, concave.

12421

C.
5 coins
average
2.5
largest
0.25
square
smallest
0.15
square.

Fragments of inscriptions.

Dots and signs of animals.

12422

C.
4.0
0.3

Tree and inscription as on 12405.

Lion to r., scarcely discernible.

12423

C.
2.5
0.25

Tree and railings *mala*.

An open flower.

12424

C.
2 coins
average
14.0
0.45

Open flower with fragments of in-
scription going round it *mala*.

King seated.



12425 C. 2 coins average 11.5 0.42	Open flower, no inscription.	King seated.
12426 C. 9 coins average 7.2 0.35 square.	Tree; to <i>r.</i> <i>Málavá</i> , to <i>l.</i> <i>na jaya</i> .	Vase, in dotted square.
12427 C. 5 coins average 6.3 0.35 square.	do.	do.
12428 C. 5.5 0.27 square.	Similar to 12426, but inscription cut.	Vase, in dotted square.
12429 C. 3 coins average 4.8 0.27 round.	do.	do.
12430 C. 2.5 0.2 round.	Inscription going round the coin is scarcely legible.	Vase.
12431 C. 2.5 0.25	Inscription in two lines, but no tree between as on 12402.	Vase.



12432 C. 1·7 0·2 square.	Tree, no inscription.	Vase.
12433 C. 4 coins average 5·4 0·25 square.	Tree, with fragments of inscription on each side.	Lion to l., in a dotted square.
12387 C. 15·0 0·5	Tree, in railings.	Snake, rest deleted.
12434 C. 3 coins average 4·9 0·25 square.	Tree as 12433.	Lion to r., in a dotted square.
13412 C. 4·5 0·3 square.	do.	do.
13413 C. 4 coins average 4·25 0·35 square.	do.	do.
12435 C. 3 coins average 7·375 0·35 & 0·3 one oblong.	In incuse:— <i>Mapaya</i> . (One with the ancient form of <i>ya</i> .)	An animal, not clear.



12436	C. ... <i>paya</i> . (With the modern form of <i>ya</i> .)	Bull to <i>l</i> .
12.5		
0.35		
12437	C. <i>Mabaya</i> . (do.)	do.
8.0		
0.34		
12438	C. In incuse :— <i>Magoja</i> .	Deleted.
4.0		
0.27		
12439	C. <i>Mapaja</i> (<i>va</i> .)	Animal to <i>r</i> .
7.5		
0.32		
×.25		
oblong.		
12440	C. In incuse :— <i>Mapajava</i> or <i>Magojava</i> .	Bull to <i>r</i> . or <i>l</i> ., not distinct.
6 coins		
average		
6.375		
0.33		
square.		
12441	C. In incuse :— <i>Magoja</i> .	Indistinct.
average		
7.5		
0.38		
square.		
12442	C. In incuse :— <i>Magoja</i> and no room for other letters.	do.
8.5		
0.35		
×.3		
12443	C. In incuse <i>Magojara</i> .	An animal to <i>r</i> .
5.0		
0.25		
square.		

12444	C. In incuse <i>Magojava</i> ; last letter not complete. 7.5 0.35 x .3 oblong.	An animal to r.
12445	C. In incuse <i>Gajama</i> . 5.0 0.35 x .28 oblong.	Blank.
12446	C. In incuse :— <i>Mapaya</i> . 11.0 (With old form of <i>ya</i> . See No. 12435.) 0.35	Bull to l.
12447	C. In incuse <i>Magajava</i> complete. 7.5 0.3 square.	Horse or lion to r.
12448	C. do. Last letter incomplete. 7.5 0.26 square.	Corroded.
12449	C. In incuse <i>Mapachaya</i> . 12.0 (See 12435). 0.37	Humped bull to l.
12450	C. In incuse <i>Mapaya</i> . average 10.0 0.35	Animal indistinct.
12451	C. In incuse <i>Mapacha</i> . 7.0 0.34	Bull to l.



12452 C. 2·3 0·25 square.	In two lines <i>Dhajapa mabama (?)</i>	Lion to r.
12453 C. 7·0 0·35 square.	In incuse <i>Malava</i> .	Corroded.
12454 C. 5·0 0·22	In incuse <i>Maja</i> .	Rubbed.
12455 C. 7·5 0·28	<i>Jamapa</i> .	Deleted.
12456 C. 4·0 0·25	Concave side :— <i>Malava</i> .	Bull to l. See 12453.
12457 C. 8·0 0·33	In incuse :—Part of legend <i>vana</i> .	Deleted.
12458 C. 2 coins average 9·75 0·4	Indistinct object, round which <i>Gava-hama</i> .	Dots, and, perhaps, an image.
12459 C. 3 coins average 8·5 0·4	King's head to l.	Indistinct object, round which portions of an inscription





12460	C. King's head.	Indistinct object, round which portions of an inscription <i>jaya</i> . Letters much cut.
6.5		
0.35		
12461	C. Round the coin <i>Sri Maharaja</i> .	Humped bull, to l. in circle of dots.
2 coins		
average		
10.8		
0.35		
12462	C. Round the coin <i>Maharaja</i> .	do.
4 coins		
average		
10.8		
0.32		
12463	C. King's head to l.	Round an indefinite object <i>Maha... sajaya</i> .
2 coins		
average		
7.5		
0.35		
12464	C. As on 12462.	As on 12462.
10.0		
0.35		
12465	C. do.	do.
10.0		
0.35		
12466	C. In two lines: <i>va Maraja</i> .	_____
8.0		
0.32		
12467	C. In incuse area:— <i>Mapaya</i> .	Bull to left. (See 12436.)
10 coins		
average		
8.7		
0.35		

12468		
C.	<i>Mara.</i>	Corroded.
8.0		
0.35		
12469		
C.	In two lines <i>ha</i>	Indistinct.
8.5	<i>rama.</i>	
0.3		
12470		
C.	Tree and <i>Malavana jaya.</i>	Vase of peculiar shape.
4.0		
0.26		
square.		
12471		
C.	Bull, to <i>l.</i>	Vase, with flowers in it.
11.0		
0.36		
x .28		
oblong.		
12472		
C.	Deleted.	Vase, with other flowers in it.
8.0		
0.35		
x .33		
oblong.		
12473		
C.	Standing bull, facing to <i>r.</i> , in a circle.	Corroded.
10.5		
0.35		
12474		
C.	Tree in railings occupies whole area.	Deer to <i>r.</i>
8.0		
0.35		
x .3		
oblong.		

UJAIN COINS.

8282		
Brass.	In incuse square, four small circles.	Humped bull to <i>l.</i>
69.0		
0.6		



8295	C.	Four circles, joined by two lines at right angles to each other.	A Deer to l., no horns.
117.0	0.9		
× .69			
oblong.			
12375	C.	do.	Standing image, with l. hand raised ; to r. a tree in railing ; to l. remains of letters.
62.0	0.6		
× .5			
oblong.			
12376	C.	do.	Humped bull, walking, to l.
30.0	0.45		
12382	C.	do. Each circle has a boss in its centre.	Tree in railing.
17.0	0.4		
square.			
12381	C.	do. Each circle has M. 1 in it.	Punch marks deleted.
24.0	0.42		
8430	C.	Four double circles joined by lines.	Elephant to l., over which a wheel.
20.7	0.5		

KOSAMBI COIN.

8396	C.	In middle, a tree ; below it a chaitya : to r., four circles, as in the Ujain coins, under which a swastika : to l., a wheel, above which an indistinct symbol.	Humped bull to l. ; above it four crescents with their backs to a small circle. In front M. 2.
102.5	0.95		

COINS WITH INSCRIPTIONS.

8419		
c.	Image; round it <i>khatrapasa Haga-</i>	Horse to left.
91.5	<i>mashasa.</i>	
0.75		
8421		
c.	do.	do. Almost out of field of coin.
57.5		
0.8		
8425		
c.	Image <i>trapasa</i> below, M. 5.	do. Fore-quarters gone.
74.0		
0.72		
8420		
c.	do. <i>trapasa Ha.</i>	do.
60.0		
0.65		
8416		
c.	do. <i>trapasa Ha.</i>	do.
46.0		
0.8		
8417		
c.	Image with bent rod in r. hand;	do.
72.7	below M. 5 and <i>khatrapa.</i>	
0.7		
8402		
c.	Lower part of an image; M. 5	do.
80.0	below; legend gone.	
0.7		
8403		
c.	Indistinct.	do.
87.0		
0.62		
8405		
c.	The sign M. 5 and some fragments	do.
86.0	of letters.	
0.7		



8406			
C.	Entirely deleted.		Horse to left.
36.0			
0.65			
8407			
C.	M. 5 and <i>pasa</i> . Image not clear.		do.
19.0			
0.6			
8924			
C.	Image not discernible and <i>trapa</i> .		do.
69.7			
0.75			
8415			
C.	...sa <i>Hagama</i>		do.
163.0			
0.7			
8424			
C.	Image gone and... <i>pasapatra</i> .		do. Rubbed.
47.0			
0.7			
8422			
C.	Image and <i>khatradasa</i> .		Blank.
77.0			
0.7			
8401			
C.	do. do. To r., a tree.		do.
44.0			
0.62			
8418			
C.	Image; to r., a tree and <i>sama</i> — <i>sa</i> .		Quadruped to r.
75.0			
0.68			
3423			
C.	Image; below it M. 5 and <i>khatra</i> — <i>sa</i> .		do.
77.0			
0.75			



12736

c.
60.0
0.75

Image; below it M. 5 and *khatra-sa*.

Horse to left.

The above are probably all coins of the Satrap Hagamasha. (See "Ancient Coins of India" by Sir A. Cunningham, p. 87.)

8456

c.
93.0
0.8

Indistinct image. Legend *Rāma datasa*.

Exceedingly indistinct.

8457

c.
104.5
0.8

do.

Indefinite.

8458

c.
105.0
0.85

do.

do.

8460

c.
54.0
0.65

Image in centre: ...*madatasa*.

Elephant to r., occupying whole field of coin.

8454

c.
56.0
0.68

do.

do.

Indistinct.

12367

c.
109.0
0.8

do.

do.

Dots.

The above six coins are of *Rāma-datta*. ("Ancient Coins of India." p. 89.)

8409

c.
85.0
0.66

Image holding up r. hand; tree to l.;
Bala Bhutisa.

All dots.

8408

c.
82.0
0.75

do. *Bhutisa*.

Dots and indistinct objects.



ANCIENT COINS OF INDIA.

CSL

8410		
C.	As on 8409, but first letter omitted.	Dots.
78.5		
0.65		
8411		
C.	As on 8409, first three letters only.	Dots.
87.5		
0.66		
8412		
C.	do. but first letter only.	Blank and convex.
86.0		
0.61		
8413		
C.	Image and...sa <i>Balabhutisa</i> .	Indistinct.
73.5		
0.7		
8414		
C.	Image and <i>la Bhutisa</i> .	do.
80.5	All in incuse circle.	
0.6		
The above seven coins are of Rája Bala Bhuti. ("Ancient Coins of India," p. 87.)		
8399		
C.	Tree, above which (<i>Vi</i>)ra <i>Senasa</i> .	Indistinct.
18.0		
0.45		
x.35		
8400		
C.	do. ...sanasa.	do.
15.0		
0.42		
x.38		
8397		
C.	do. Legend gone.	do.
19.5		
0.45		
x.38		
8398		
C.	Indistinct.	do.
20.5		
0.4		
x.35		

COINS WITH INSCRIPTIONS.

12365	C. <i>Vira Senasa</i> , below which an ornament.	An attempt at representing an image.
25.0		
0.45		
4		
long.		
1364	C. <i>Virasana</i> , below indistinct.	Deleted figure.
29.5		
0.58		
square.		

asa, rest indistinct.

Dots.

are.

The above seven coins are of *Vira Sena*. ("They are found at Mathurá.")

8750	C. Image; round it <i>Rajña Janapadasa</i> .	In rayed circle, a humped bull to l.
34.5		
0.65		
8751	do. do. do.	do.
C.		
74.0		
0.7		
12737	do. All letters not present.	do.
C.		
69.0		
0.65		
38	do. Four letters only left.	Animal not clear.
0		
3		

These four coins are of *Rāja Janapada*. ("Ancient Coins of India," p. 89.)

8925	C. <i>Maharāja Puganaputtra</i> ?	Humped bull to l., in circle of dots.
43.0		
0.4		



12327

C.
40.5
0.55

To left a sun : to r. *Maraputra* ?

Jaya.

12373

C.
33.0
0.6

(?)

Hind-quarters of animal.

8359

C.
20.0
0.5

A tree ; round it *Chhadanivasa*.

Humped bull to r.

8360

C.
30.0
0.55

In an incuse square, tree and legend,
as on 8359.

Quadruped to l.

8361

C.
26.0
0.46

do. but only 3rd letter
plain.

Humped bull to r.

8362

C.
19.5
0.48

do. do.

do.

8363

C.
15.5
0.45

do.

Indistinct.

8375

C.
26.5
0.62
x.55
oval.

Tree to r.; chaitya to l.; below
...vatima. To r., a snake.

Humped bull to r.

8370

C.
42.0
0.6
x.5
oblong.

gava -

Blank.



COINS WITH INSCRIPTIONS.

CSL

8350 C. 16.0 0.4 square.	A six-spoked wheel, round which <i>Th—</i>	A quadruped under a tree, to l.
8383 C. 20.0 0.4	Tree in railings to r., four circles joined below :— <i>Sa—sa.</i>	Humped bull to r., over which M. 6.
8446 P P P Image ; round it <i>najabhamaga.</i>		Blank.
8447 J. 16.5 0.7	Image ; round it <i>Sri Maharajasa.</i>	Indistinct.
8448 C. 68.0 0.65	Image ; round it ... <i>rajasa.</i>	do.
8455 C. 46.0 0.61	Image : beneath it a swastika ; round it :— <i>rajama—masa.</i>	do.
12740 C. 71.5 0.65	Image, inscription not legible.	Blank.
12743 C. 22.5 0.4	Three Sanskrit letters (?)	do.
12744 C. 87.5 0.35	Remains of a 2nd line of legend.	Horse to r., hind-quarters only.



ANCIENT COINS OF INDIA.

CSL

13203	C.	Three Sanskrit letters (?)	Horse to r.
40-0			
0-55			
8435	C.	अ अ	A wheel.
16-0			
0-5			
8436	C.	do.	do. Poor.
16-0			
0-5			
8437	C.	do.	do. do.
16-0			
0-5			
8438	C.	do.	do. do.
9-5			
0-5			
broken.			
8439	C.	do.	do.
15-0			
0-5			
8440	C.	do.	Not decipherable.
17-5			
0-5			
8441	C.	do.	A wheel ; poor.
12-0			
0-45			
8442	C.	do.	do.
12-5			
0-45			
8443	C.	do.	do
19-0			
0-5			

COINS WITH INSCRIPTIONS.

8444		
C.	चच	A wheel; fair.
25.5		(Journal, As. Soc. Beng., 1880, Pl.
0.5		VII, fig. 2.)
8432		
C.	Tree ra...ma.	A Giraffe.
40.0		
0.5		
×.4		
oblong.		

COINS WITH FRAGMENTARY INSCRIPTIONS.

8367		
C.	Coarse letters, in fragments.	Some signs.
52.0		
0.6		
×.5		
8368		
C.	Tree, and below it letters nama.	Blank.
33.0		
0.6		
triangu- lar.		
8369		
Brass.	In incuse ya.	do.
58.5		
0.63		
quaro.		
8371		
C.	Tree; to r. a zig-zag.	A quadruped.
7.5	Below, some letters (P)	
0.33		
almost square.		
8372		
C.	In incuse, a tree; to r. a zig-zag.	Humped bull to l.
24.0	Below, vama...	
0.43		



ANCIENT COINS OF INDIA.

CSL

8373		
c.	In incuse, a tree; below, letters? To	Humped bull to r.
36.0	right, a sign made up perhaps of	
0.75	letters.	
8374		
c.	do.	do.
66.0		
0.75		
8366		
c.	Humped bull to r., in dotted circle.	Going round the coin <i>Sri Maharaja</i> .
22.0		
0.36		
8365		
c.	do.	do. Letters cut.
16.0		
0.35		
8364		
c.	do.	do. do.
24.0		
0.4		

CHAITYA AND ELEPHANT.

12722		
c.	Chaitya and M. 1 on either side.	Elephant to left.
49.0		
0.5		
12723		
c.	do. do.	do.
40.0		
0.45		
12724		
c.	do. do.	do.
40.0		
0.5		
12725		
c.	Chaitya alone.	do.
30.8		
0.45		



CHAITYA AND ELEPHANT.

CSL

12726

C.

Chaitya alone.

Elephant to left.

23.0

0.55

12729

C.

do.

do.

25.4

average

of 5

coins.

0.45

8290

C.

do.

do.

34.0

0.55

8291

C.

do. Indistinct.

do.

41.5

0.4

12727

C.

do.

Elephant to right.

20.0

0.45

12728

C.

do.

do.

16.0

0.5

12733

C.

Blank.

do.

30.0

0.5

x.4

oblong.

8341

C.

Chaitya.

Elephant.

14.0

0.45



CSL

ANCIENT COINS OF INDIA.

8335	C. Chaitya.	Elephant.
23.5		
0.45		
8318	C. Two or three figures, (dancing ?)	Elephant to left.
73.0		
0.65		
8326	C. Blank.	Elephant to right, and probably, above it, four circles joined.
29.0		
0.42		
8286	C. Four double circles.	Elephant to left.
10.0		
0.35		
8288	C. Undecipherable.	Elephant to right.
31.0		
0.46		
8289	C. Tree to right, to left a cross, and above it a Chaitya.	Elephant.
35.0		
0.55		
square.		
8280	C. Two coins joined in casting. Each coin has an elephant running to left, as on 12722, and on the other side a chaitya alone.	
92.5		
8286	C. Similar to one of 8280.	
43.0		
0.5		
*12363	C. A cross in incuse square.	Elephant to r.
2 coins,		
av. wt.		
28.5		
0.45		
square.		

* These coins were cast in a row, as the joinings are still on them.



CSL

CHAITYA AND LION.

8354		
C.	A tree to r., M. 7 to l., M. 8 in	Elephant to l. under foliage (P)
Brass,	middle; below all a snake.	
9.5		
0.5		
square.		

CHAITYA AND LION.

8754				
C.	Chaitya and M. 1 on either side.		Lion to left and in front M. 9.	
72.9				
0.65				
12715				
C.	do.	do.	do.	do.
92.5				
0.7				
12716				
C.	do.	do.	do.	do.
80.0				
0.6				
12717				
C.	do.	do.	do.	do.
70.0				
0.65				
12718				
C.	do.	do.	do.	do.
63.0				
0.65				
12719				
C.	do.	do.	do.	do.
55.0				
0.6				
x.45				
12720				
C.	do.	do.	do.	do.
53.0				
0.55				



ANCIENT COINS OF INDIA.

CSL

12721	C.	Chaitya and M. 1 on either side.	Lion to left and in front M. 2.
35.0			
0.45			
8314	C.	do. do.	do. do.
67.3			
0.6			
8315	C.	do. do.	do. do.
73.0			
0.6			
8319	C.	do. do.	do. do.
65.5			
0.6			
8317	C.	do. do.	do. do.
66.0			
0.56			
8321	C.	do. do.	do. do.
76.0			
0.65			
8324	C.	do. do.	do. do.
70.5			
0.6			
8325	C.	do. do.	do. do.
84.0			
0.65			
8328	C.	Object not distinguishable.	do. do.
24.3			
0.45			
12883	C.	Chaitya and M. 1 on each side.	do. do.
67.0			
0.6			

CHAITYA AND TREE.

12730		
C.	Chaitya alone.	Tree; broad leaved.
45.0		
0.5		
square.		
12731		
C.	do.	do.
43.5		
0.4		
square.		
8298		
C.	do.	do.
49.5		
0.5		
square.		
8300		
C.	do.	do.
41.0		
0.5		
square.		
8302		
C.	do.	do.
61.0		
0.5		
square.		
8308		
C.	do.	do.
53.0		
0.5		
square.		
8311		
C.	Undistinguishable.	do.
27.0		
0.35		
square.		



ANCIENT COINS OF INDIA.

CSL

8331 C. 30.0 0.55	Undistinguishable.	Tree; broad leaved.
12384 C. 2 coins average 42.5 0.46 square.	Chaitya with M. 1b on each side.	do.

CHAITYA AND HORSE, OR BULL.

12732 C. 23.0 0.55	Chaitya, and M. 1, reversed, on either side.	Horse or deer, and tree to right.
8316 C. 62.5 0.62	do. do.	Bull walking to r., and over it M. 10.
8320 C. 58.0 0.6	do. do.	do. do.

ELEPHANT AND HORSE.

8693 C. 80.8 0.5 nearly square.	Horse galloping to l., a star above it.	Elephant to r.
---	---	----------------

ELEPHANT AND LION.

7701		
C.	In incuse square, lion to l., over which	Elephant to r., over which M. 12.
164.0	M. 11 and in front M. 12.	
0.8		
× 0.75		
oblong.		
12743		
C.	do.	do.
172.0		
0.7		
square.		
13344		
C.	do.	do.
63.0		
0.65		
× .54		

MISCELLANEOUS.

7455		
C.	Six-spoked wheel.	Indistinct object.
37.5		
0.5		
13342		
C.	Figure seated. Letters underneath	Wheel; obliterated.
77.9	worn.	See "Ancient Coins of India," Pl. III,
0.85		fig. 13.
× .75		
rectan-		
gular.		
13343		
C.	Wheel.	Some Pāli letters; indistinct.
33.0		
0.7		
× .65		



ANCIENT COINS OF INDIA.

CSL

13345	C. Humped bull to r., over which three small circles. No legend.	Lion. No legend.
87.0		
0.85		
13346	C. Chaitya.	M. 13.
39.0		
0.7		
13347	C. Enclosure, with six large leaves growing out of it.	Quadrangle, with curved sides.
16.0		
0.55		
square.		
13348	C. Lion to left. To l. M. 13, above it M. 1.	Blank.
30.0		
0.6		
13349	C. Lion to left, above it swastika. To its left M. 1.	
30.0		
0.65		
9961	C. Elephant to l., before it M. 1b, under it M. 9, to the left of which is M. 13.	To r., a tree in railings; to l., a M. 14, over which a chaitya.
63.0		
0.55		
square.		
12362	C. do.	do.
41.0		
0.56		
square.		
8346	C. do.	Tree, and indistinguishable object.
50.0		
0.7		
x.55		
irregu- lar.		

8281		
C.	Man, riding bull to l.	Tree in centre. To r. a chaitya and
64.5		M. 1 reversed; to l. M. 13 and even-
0.7		armed cross.
12572		
C.	A Tree in railings, and remains of	A Lion to r.
45.3	Pāli letters.	
0.5		
12573		
C.	do.	M. 6; rest deleted.
20.5		
0.5		
12574		
C.	do.	M. 15.
15.9		
0.6		
x .5		
oval.		
10019		
C.	Humped bull to r., in front of which	Image in centre, over which M. 13; on
56.0	M. 16, and above <i>Dhanadavada</i> .	either side is M. 17, under which is
0.8		something like an image.
x .7		
10020		
C.	Chaitya under a canopy, outside of	Quadruped to r., in front of which is
60.5	which, on either side, is a chaitya.	M. 18; all in incuse square.
0.7	All in an incuse square.	
x .66		
8305		
C.	M. 19.	Unintelligible symbols.
22.5		
.43		
square.		
8306		
C.	Three dots.	do.
34.5		
0.5		
x .4		



8344 C. 15·0 0·44 square.	Humped bull to l.; over it a M. 13.	Tree to l.; to r. a square cross, and above it four dots joined by two lines crossing each other.
8347 C. 11·0 0·45 ×·38 a broken square.	Poor duplicate of 8344.	
8351 C. 42·0 0·65 square.	An elephant and another animal (?). To l. M. 13, and under it M. 9.	Tree to r., to l. cross and chaitya. See above, 9961.
8309 C. 53·0 0·52 square.	A flower incuse.	Blank.
8322 C. 30·0 0·52	Undefined object.	Undefined object.
8323 C. 37·0 0·6	Quadruped, (?)—a camel.	Chaitya.
8284 C. 17·0 0·45	Quadruped to l.	do.
8292 C. 14·5 0·45 ×·38 oval.	Blank.	do.

8293 C. 14·0 0·42	M. 1.	Chaitya.
8279 C. 23·0 0·38	Remains of letters.	Blank.
8283 C. 25·0 0·45	Deer to r.	do.
8287 C. 38·0 0·55	Diademed head of king (?) and letters (?)	do.
8294 C. 77·0 0·75 x·6 oblong.	Bull (?) to l. and indefinite object.	do.
8296 C. 62·0 0·65 x·58 oblong.	In incuse, two crescents back to back,	do.
8297 C. 119·0 0·7 x·55 oblong.	Quadruped to l.; to its l. M. 20.	do.
8313 C. 57·5 0·55 square.	Quadruped to l.	do.



8312 C. 13.0 0.4 square.	Four circles joined by two straight lines at right angles to each other.	Blank.
8349 C. 26.0 0.55 square.	do.	do.
8340 C. 25.0 0.41	Indian bull to <i>l</i> .	do.
8336 C. 12.0 0.47	Quadruped to <i>r</i> .	do.
8355 C. 31.0 0.32	Humped bull to <i>r</i> .	do.
8356 C. 11.5 0.37	To <i>r</i> . a tree; to <i>l</i> . four circles joined.	do.
8357 C. 17.0 0.41	Tree in middle; to <i>r</i> . an animal eating the tree; to <i>l</i> . a circle.	do.
8330 C. 14.0 0.4	Obv. a triangle, with an inverted crescent on the apex.	do.
8332 C. 17.8 0.5	Two Indian Pāli letters ?	do.

8333 C. 17·8 0·4	Two figures, 1 and 3?	Blank.
8334 C. 7·0 0·4	Two human figures, very indistinct.	do.
8339 C. brass. 17·5 0·35 x·45 hexa- gonal.	Wheel with dots for tire.	do.
8327 C. 22·5 0·49	Man, with coat on, holds a rod in his r. hand.	Indistinguishable.
8337 C. 22·0 0·55	Human figure, holding up l. hand; r. hand stretched out.	Indefinite object.
8343 C. 60·0 0·7 x·55 oblong.	Quadruped to l.	do.
12372 C. 23·0 0·46	Man standing and holding up r. hand: To r. a pole.	In incuse square, an animal.
8338 C. 13·5 0·48	Quadruped to l.	Man holding bow in r. hand.



CSL

ANCIENT COINS OF INDIA.

8353	C. Quadruped to r.	Tree to l.; to r., a cross.
7.0		
0.45		
square.		
8342	C. Quadruped walking to l.	do. do.
24.0		
0.45		
square.		
8329	C. Wheel, only three spokes visible.	म.
12.8		
0.48		
8348	C. Deleted. Remains of images.	Deleted.
6.0		
0.4		
x.3		
8428	C. Six dots forming a hexagonal, a seventh in the middle.	Blank.
43.0		
0.75		
hexagonal.		
8429	C. Similar to 8428, but shape not so decided.	
50.5		
0.75		
8427	C. Two concentric linear circles surrounded by one of dots.	Blank.
110.0		
0.6		
x.45		
thick		
oblong.		
12733	C. Tree, remains of letters and M. 21.	Tree, double struck.
24.5		
0.55		



8404 C. 77·0. 0·81 x·7 oval.	Bactrian Pálí letters (?)	Horse to left.
8358 C. 36·0 0·56	Incuse square, in which is a tree, with some Bactrian Pálí letters (?)	A quadruped to r.
8445 C. 99·0 0·8	In centre an image. Legend gone.	Indistinct.
8922 C. 94·2 0·65	do. do.	do.
8352 C. 17·0 0·38 square.	Four dots and a sign.	Remains of letters.
8687 C. 18·7 0·5	Raven to l., over which M. 22.	Blank. (This coin is from Kángra.)
8749 C. 122·5 0·9 x·7 oblong.	In incuse, a chaitya and plan of monastery.	Blank. (This coin is from N. Panjáb.)
8459 C. 58·0 0·6	Image in centre. Legend in frag- ments.	Nothing definite.



ANCIENT COINS OF INDIA.

CSL

7486		
C.	Corroded.	Corroded.
118.7	Devices on both sides illegible.	(This coin was found in making the road to Kashmir, through the Bara-mulla Pass.)
1.0		
x.8		
oblong.		
9293		
C.	Two seated figures.	Sanskrit letters (?)
176.5		
0.7		
8968		
C.	Indefinite.	Remains of Sanskrit letters.
19.7		
0.35		
8969		
C.	Horse to left.	Remains of legend in two lines of Sanskrit.
18.3		
0.4		
8449		
C.	An image: legend deleted.	Three lines of deleted illegible inscription.
65.5		
0.7		
8450		
C.	In incuse circle:—in centre an image, swastika and four single circles joined. A symbol to r.	Lion to l.; legend all gone.
117.0		
0.65		
square.		
8451		
C.	do. Poor.	All unintelligible.
114.0		
0.6		
four sided.		
8452		
C.	In incuse circle:—to l. a tree; rest deleted.	Unintelligible.
108.0		
0.7		
square.		



MISCELLANEOUS.

CSL
55

8453	C.	Indistinct sign.	Indistinct signs.
30·5			
0·56			
square.			
8866	C.	M. 23.	Man and bull in outline.
67·0			
0·75			
8867	C.	do.	do.
76 0			
0·7			
8868	C.	do.	do.
to			
8875			
9020	C.	do.	do.
71·5			
0·7			
10000	C.	do.	do.
60·0			
0·72			
10004	C.	M. 24. in dotted circle.	do.
54·0			
0·68			
8262	C.	M. 25.	do
59·5			
0·7			
8263	C.	do. Worn.	do. Worn.
69·0			
0·73			



ANCIENT COINS OF INDIA.

CSL

8264	C.	M. 5. Poor.	Man and bull in outline, poor.
70.0			
0.68			
8265	C.	do.	do.
59.0			
0.7			
8267	C.	do. Much worn.	do. Much worn.
44.0			
0.68			
8268	C.	do. do.	do. do.
83.0			
0.67			
8269	C.	do. do.	do. do.
66.0			
0.75			
x.59			
8266	C.	M. 26.	do.
78.0			
0.7			
8260	C.	M. 27.	Blank.
68.0			
0.75			
8270	C.	M. 28.	do.
60.5			
0.75			
8973	C.	M. 29.	Man and bull.
65.2			
0.75			

YAUDHEYA COINS.

8989		
c.	M. 30.	Man and bull.
25.0		
0.65		
x .6		
12575		
c.	M. 31. a circle of dots.	do.
33.0		
0.65		

YAUDHEYA COINS.

12578		
c.	Male figure standing to front, holding spear in r. hand, his left resting on his thigh. Below left hand, a cock standing. Round the figure जय यौधेय गणस्य.	Male figure standing to l., in long robe, with l. hand on thigh, and r. hand upraised before his face. The whole in a circle of dots. Arch. Survey Rep., Vol. XIV, p. 141.
171.0		
0.9		
12579		
c.	do.	do.
172.0		
0.95		
12580		
c.	Similar to 12578.	
4 coins.		
8461		
c.	Similar to 12578, but all legend gone.	Deleted.
137.0		
0.9		
8986		
c.	As on 12578, but ह to left of the head of the figure.	Male figure standing to l., in long robe. To right M. 12. To left a flower pot.
169.5		
0.95		
8917		
c.	do.	do.
154.3		
0.95		



ANCIENT COINS OF INDIA.

CSL

9035	C.	As on 12578, but ॐ to left of the head of the figure.	Male figure standing to l., in long robe. To right M. 32. To left a flower pot.
174.0			
0.95			
9036	C.	do.	do.
170.0			
0.95			
9037	C.	do.	do.
170.7			
0.9			
12581	C.	do.	do.
3 coins.			
12582	C.	do.	do.
168.0			
0.9			
9038	C.	As on 12578, but ॐ to left of head of the figure.	Figure as on 12578, but to left a shell, and to right M. 13.
174.0			
0.95			
9039	C.	do.	do.
174.0			
0.9			
12583	C.	do.	do.
2 coins.			
12739	C.	Bull to r., tree in enclosure. Indian Pāli letters.	Elephant to r. See Arch. Survey Rep., Vol. XIV, p. 141.
brass.			
35.8			
0.75			
12565	C.	King standing, rayed head.	Tree, man and chaitya. No legend.
174.5			
1.05			

12746	C. Six-headed image with spear in r. hand. Three letters.	Chaitya, image and tree.
179·0		
1·1		
12747	C. Image with spear in r. hand ... <i>gavata</i>	Five-headed image, chaitya and tree.
167·0	<i>Sv...na.....</i>	
0·95		
12748	C. As on 12746.	Six-headed image, chaitya, tree and snake.
166·5		
1·0		
12749	C. Image. Remnants of legend.	Image, two swastikas, tree, chaitya.
160·0		
1·1		
12750	C. Rayed image, jar, remains of letters.	Tree; rest deleted.
154·5		
1·0		
12751	C. Six-headed image, spear in r. hand. Several letters above image.	Six-headed image, tree.
153·0		
0·95		
12752	C. As on 12751, but no letters.	Woman, tree, chaitya, and one other symbol.
134·0		
1·0		
12745	C. Chaitya.	Deleted.
182·0		
1·0		

WESTERN KSHATRAPAS.

8272	S. Head of king to r., and remains of barbarous Greek legend.	Chaitya and sun to r. Legend in Gupta letters :— <i>Rajño mahakshatrapasa rajño kshatrapasa Viradāma.</i>
30·5		
0·55	Kshatrapa, Viradāman. (Rapson, No. XIII).	



8271	S. As on 8272. 38.7 Vijayasena. 0.6 (Rapson, No. XV).	Chaitya and sun to r. Legend:— <i>Rajño mahakshatrapasa Damasenasa putrasa rajño mahakshatrapasa Vijayasena-sa.</i>
12486	S. As on 8272. 28.0 Rudrasinha. 0.6 (Rapson, No. XVIII).	Chaitya, to l. a moon; to r. a sun; below, a snake. Legend has tops of letters cut off, and is otherwise mutilated. Enough is left to show that the coin was struck by Rudrasinha son of Rudradāman.
7827	S. As on 8272. 30.5 Bhartridāman. 0.55 (Rapson, No. XIX).	As on 12486. Legend:— <i>Rajño mahakshatrapasa (Bhar)tridāmana.</i>
7831	S. As on 8272. 29.2 Bhartridāman. 0.55 (Rapson, No. XIX).	As on 12486. Legend, fragmentary:— <i>mahakshatrapasa Bhartri (dāmana).</i>
9988	S. As on 8272, no legend. 30.0 Bhartridāman. 0.56	As on 12486. Legend. <i>Rudra Sinha putrasa Ra.....</i>
7825	S. As on 8272. 30.5 Viśvasinha. 0.53 (Rapson, No. XXI).	As on 12846. Legend, fragmentary:— <i>Viśvasinhasa.</i>
12487	S. As on 8272, no legend. 22.0 Same as 7825. (worn) 0.55	Chaitya, to left, a star. Legend fragmentary:—..... <i>Rajño kshatrapasa Viśvasinhasa.</i>
7826	S. As on 8272. 30.5 Viśvasinha or Viśvasena. 0.55 (Rapson, No. XX or XXI).	Chaitya, sun and snake: Legend:— <i>Rajño kshatrapasa Viśva</i>

GUPTA COINS.

7828			
s.	As on 8272.		As on 12846. Legend, fragmentary:—
32.3	Rudrasinha.		<i>swāmi Jivadama putrasa ...</i>
0.55	(Rapson, No. XXIII).		<i>Rudrasinhasa.</i>
7829			
s.	do. do.		As on 7828, but only first fragment of
23.5			legend.
0.54			
7830			
s.	do. do.		As on 7828; but legible fragment:—
30.8			<i>..... putrasa rajño kshatrapasa</i>
0.58			<i>Rudrasinha....</i>
12488			
s.	King's head to r., to its left date, in		Chaitya, sun, snake. Legend, fragmen-
29.5	Gupta figures, 287.		tary:—..... <i>sinha putrasa rajño</i>
0.55	Yaśodāman.		<i>kshatrapasa Yaśodamana.</i>
	(Rapson, No. XXIV).		
12489			
c.	In circle of dots, elephant to r., over		Chaitya, with two crescents, and to r.
28.5	it a crescent.		a sun. Beneath, a snake, under it
0.47			figure for 200, in Gupta character.

GUPTA COINS.

SAMUDRA GUPTA.

7703			
G.	King standing to l., with r. hand		Lakshmi seated on throne with cornu-
115.0	makes an offering at an altar: l.		copiae on l. shoulder. To r. परमेश्वर.
0.8	hand holds a spear: behind r. arm		Legends on both sides in Gupta letters.
	is bird standard. Under left arm स.		
	Left side, legend gone. इ		
12758			
G.	do. To r.:—समर शत वित्त		do.
116.0	Legend to l. gone.		
0.85			
12759			
G.	do. but legend to r. gone,		do.
	and parts of legend		
	to l. visible.		



7704		
G.	As on 7703, but king's name क Kacha	Lakshmi seated on throne with cornucopiae on l. shoulder. To r. परक्रम.
151.5		
0.76	who is said to be the same as Samudra or his brother. He reigned independently.	Legends on both sides in Gupta letters.
10503		
G.	As on 7703.	As on 7703.
113.0		
0.8		

CHANDRA GUPTA II.

11041		
G.	King standing to l.; in l. hand a bow, in r. hand an arrow: over r. arm the bird standard: under left arm: च.	Female seated cross-legged on lotus: to r.:—चैविक्लमः. The क is doubled on this coin only.
118.8		
0.75	च	
10501		
G.	do. but to r., is a legend very much cut.	do. but legend almost illegible.
127.0		
0.78		
x.7		
oval.		
10502		
G.	do. do.	do. Legend plain.
125.0		
0.8		
x.74		
oval.		

KUMARA GUPTA.

7705		
G.	As on 7703, but in l. hand a bow, one end of which rests on the ground.	Female seated on open lotus. Legend obliterated.
149.0		
0.8	Below l. arm :—क.	
	म	
	र	

NARA.

7183	G.	As on 7703: under l. arm:—न.			
146.0		र			Female seated on open lotus, holding in
0.85					r. hand a wreath. Legend smudged.
7706	G.	do.	do.	Between legs of	do. Legend obliterated.
145.0				the king ग or घे.	
0.82					

KUMÁRA GUPTA.

7833	S.	Head to r., and behind it H◦H◦.			In centre something like a double
29.3					peacock-tail. Round it <i>parama</i>
0.53					<i>bhatarana</i> (!) <i>maharaja takadaja</i> !!
					<i>Srī Kumāra Gupta Mahendraditya</i> .
					Blundered.
7832	S.	do. but oNo.			do. and legend:— <i>parama bhana-</i>
32.0					<i>vata</i> (!) <i>rajadhiraja Srī</i>
0.55					<i>Mahendraditya</i> Blundered.
7837	S.	do. As on 7833.			do. and legend:— <i>bhagavata raja-</i>
32.6					<i>dhiraja ...mara Gupta</i> .
0.52				
× 45					
7834	S.	Head to right, no legend.			do. and fragmentary legend:—.....
28.0					<i>Srī Kumāra Gupta ...ndra-</i>
0.5					<i>ditya</i> .
8274	S.	do. Remains of legend.			do. and ... <i>Kamāra Gupta Ma...</i>
31.7				
0.55					



CSL

ANCIENT COINS OF INDIA.

7835 S. 28.5 0.5	Head to r.: and oH o H o.	In centre something like a double peacock-tail and fragmentary legend:— ...rajadhira (!) <i>Srī Kumāra Gupta Mahendraditya</i> . Blundered.
7836 S. 30.5 0.52	Head to r.: no legend.	do. Fragment of legend:—... <i>māra Gupta Matr (!) ditya</i> . Blundered.
7838 S. 30.0 0.55	Head to r.: behind it a legend cut.	do. Fragments of legend:— <i>par</i> <i>māra Gupta Mahendra-</i> <i>ditya</i> .

SKANDA GUPTA.

8887 S. 28.4 0.58	Head of king to r.	Peacock with tail outspread. Legend in full all round it, in short Gupta letters:— <i>Vijitāvanir avanipatir jaya-ti deva Skanda Guptayam</i> .
-----------------------------------	--------------------	---

NO NAMES.

*7839 S. 28.6 0.52	Head to r.; poor.	In centre a trisūl. Inscription not read.
7840 S. 29.3 0.52	do. Scarcely discernible.	do. Legend fragmentary.
7841 S. 34.0 0.48	do. do.	do. do.
7842 S. 30.0 0.55	do.	do. do.

* The seven coins, Nos. 7839—7845, are probably of Valabhi kings, who succeeded the Guptas.



7843 S. 29.3 0.5	Head to r.; poor.	In centre a trisúl. In legend <i>Gupta</i> is legible.
7844 S. 29.8 0.49	do.	do. Legend fragmentary.
7845 S. 29.0 0.55	do.	do. do.
13352 C. 26.0 0.5	Blank.	Peacock, with tail spread: beneath it <i>Gupta</i> .
8273 C. 75.0 0.8 x.66	Upper half of a man; bird to r.	Lower part of a bird, with wings outstretched. Gupta inscription in two lines of which only <i>ja...</i> and <i>gu...</i> are legible.
8275 C. 23.5 0.4	Blank.	Trident and axe combined. Illegible Gupta letters round it.
8276 C. 29.5 0.42	Head of king to r.	Fragmentary Gupta legend.
12490 C. 28.0 0.42	do.	Bow and trisúl. Gupta fragmentary legend illegible.

COINS ALLIED TO GUPTA COINS.

13356 G. 118.0 0.75	Standing figure, high head-dress and full armour. In left hand a spear under which च. To right म. The right hand is making an offering.	Female figure, with cornucopias on left shoulder.
-------------------------------------	---	---



13353 Brass. 65.0 0.65	Standing figure; under left arm :— स and other letters. श न	Female figure, with cornucopie on left shoulder.
13354 Brass. 82.0 0.85	Standing figure, double struck.	do. Double struck.
13355 C. 116.0 0.85	Standing figure, in l. hand a spear, to r. of which some Bactrian Pāli letters (?), and to l., others (?).	do.

KEDARA COINS.*

7182 G. 119.5 0.91	Male figure standing to l., with r. hand is making an offering at small altar, l. hand holds a spear. Under l. arm के in old Sanskrit letters. द र	Female figure seated.
9111 G. 122.5 0.94	As on 7182, but to l. of king क न श	do. Very rude.
9112 G. 121.0 0.9	do.	do.
9113 G. 123.0 0.88	do.	do.
9114 G. 122.0 0.9	do.	do.

* On these coins, see a paper by General Sir A. Cunningham in the Numismatic Chronicle, Part II, 1893.



9115 G. 122.0 0.9	As on 7182, but to l. of king क न. र	Female figure seated.
9116 G. 122.0 0.9	do.	do.
9263 G. 122.8 0.9	do.	do. Not so rude.
9264 G. 121.0 0.95	do.	do. Better.
10114 G. 123.0 0.78	Male armed figure; rest as on 7182.	do. To r. श्री कु (?)
9131 G. 116.5 0.86	Rude image of armed king. To r. के; to l. क. इ	Strange image, unlike anything: H to r. :—श्री य.....
9132 G. 115.3 0.9	do.	do. Head of image plain.
9133 G. 112.8 0.85	do.	do.
9134 G. 115.5 0.9	do.	do. but legend श्री यरप (?), and to left क.



ANCIENT COINS OF INDIA.

CSL

7697	M.	Armed figure; under l. arm as on	Lakshmi seated.
113.0		7182. To r. म.	
0.86		न	
UNASSIGNED.*			
9989	M.	Seated humped bull to l. Over it:—	Shiva's trident, sun to l., moon to r.
103.0		इतिचन्द्र Priti Chandra in old cha-	
1.17		acters.	
Broken			
on the			
edge.			
9990	M.	Bull as above, and Yari kriya, in	do.
112.0		old characters.	
1.1			
Broken			
on the			
edge.			
9991	M.	do. do.	do.
113.0			
1.1			
9992	M.	do. do.	do.
104.0			
in two			
pieces.			
9993	M.	do. do.	do.
89.0			
1.0			
Two			
frag-			
ments.			

* On these coins see the *International Numismata Orientalia*, Vol. III, Coins of Arakan, of Pegu and of Burma, Plate II.

9994 110-0 1-05 broken.	Bull as above, and <i>Yari kriya</i> , in old characters.	Shiva's trident, sun to l., moon to r.
9995 110-0 1-1 Broken on the edge.	do. do.	do.
9996 114-0 1-03 a little broken.	do. do.	do.
9997 100-0 1-15 much broken.	do. do.	do.
9998 108-5 1-0 much broken.	do. do.	do.



CSL

71

MEDIÆVAL COINS OF INDIA.



MEDIÆVAL COINS OF INDIA.

	Page.			Page.
Mahārājas of Kashmir	... 73	Varāha Coins 96
Hindú Kings of Kábul and		Kanauj 97
the Panjáb	... 82	Chedí 98
Mahārājas of Kángra	... 88	Chandel 99
Indo-Sassanian Coins	... 92	Undetermined 100
Gadhiye ke Paise	... 95			



CSL

MEDIÆVAL COINS OF INDIA.

KASHMIR.

MIHIRAKULA.

13168	C.	Head of king, and to r. of it:—	Bull to l., and under it:—
42.5		वैमिशिर कुल	जयतु हृष
0.75			
x .65			
13169	C.	do. but legend not full.	do. but double struck.
46.0			
0.7			
12584	C.	do. Legend illegible.	do. Legend partly legible.
52.7			
0.7			

TORAMAṆA.

8491	C.	Head of king to r. in dotted circle ;	Wheel, under which a line, under which
51.0		in front प	✽ J.
0.66			
13170	C.	do.	do.
51.0			
0.7			



MEDIEVAL COINS OF INDIA.

CSL

13171	C.	Head of king to r., in dotted circle ; in front तु	Wheel, under which a line, under which ॐ J.
39.5			
0.58			
13172	C.	do. nothing in front.	do.
53.0			
0.7			
12564	C.	Rude image standing.	Wheel, under which ॐ ॐ
65.0			
0.65			
13173	C.	Man and bull.	Wheel, under which letters.
52.0			
0.6			

PRATAPA.

9962	M.	Headless trunk of a man, to r. ची	Man in armour, coarsely executed. Le- gends cut.
108.0		प्रतप	
0.75			
7159	C.	do.	Destroyed.
102.0			
0.8			
10001	M.	do.	As on 9962.
112.0			
0.85			
10002	M.	do.	do.
113.0			
0.85			
10010	M.	Good do.	do.
109.5			
0.9			

KASHMÍR.

10011	M.	Headless trunk of a man, to r. श्री	As on 9962.
80.0		प्रतप Poor	
0.8			
12585	M.	do.	do.
119.0			
0.8			
8261	C.	do.	do. Legend १
104.0			
0.8			
9972	C.	do.	do.
103.0			
0.81			
9971	M.	do.	do.
79.5			
0.8			
8756	M.	do.	do. do.
84.0			
0.8			
13174	M.	do.	do.
110.0			
0.85			

JAYAPĪRA.*

7764	C.	Headless trunk. To right श्रीविजय.	Image to left; legend illegible.
109.0		To l. दिव.	
0.85			

* The coin name of this Mahārāja was Vinayāditya.



CSL

MEDIEVAL COINS OF INDIA.

UNASSIGNED.

7765	G.	Headless trunk, to r. श्रीविष्...	Rude image of a human figure	$\frac{1}{2}$
119.0				
0.85				
12586	M.	do. do.	do.	do.
112.0				
0.8				

TORAMANA.

12587	C.	Seated image, under a canopy.	Standing image to l.; reading from outside श्री तोरमण in very old letters.
83.0			
0.8			
7766	C.	do.	Standing female image, with double skirts and drawers. To left तोर only legible.
97.0			
0.75			
7443	C.	do. to r. ज(य)	Image only as on 7766. No legend.
89.0			
0.76			
7446	C.	do. do.	do. do.
103.7			
0.8			
7447	C.	do.	do. do.
72.0			
0.75			
13175	C.	do. do.	Standing female; legend, not read.
100.0			
0.87			

7448			
C.	Seated image, under a canopy.	As on 7443.	
105.5			
0.8			
8766			
C.	do. (King seated on some animal.)	do.	
106.0			
0.75			

SANKARA.

7767			
C.	King seated: to r. सङ्कर	Woman standing under a canopy, wearing double skirt and drawers. To r. वसे	
88.0			
0.75			

SUGANDHA RĀNĪ.

7769			
C.	Male figure: to l. बी: to r. सुग	Woman, &c., to r. देव	
92.0			
0.75			
8860			
C.	do. do. do.	do.	
93.0			
0.75			
12588			
C.	do. do. do.	do.	
75.0			
0.7			

PARTHA.

7768			
C.	King seated, and to r. प	Woman. To r. व.	
70.0			
0.76			
13398			
C.	do. to r. पार	do. No letters.	
84.0			
0.8			

GOPALA.

8758		
C.	King seated. To r. गोपा...	Woman, &c., to r. वर...
85.7		
0.7		

UNMATTI.

7444		
C.	King seated : परम	Woman :—उनम...
84.0		
0.72		

SANGRAMA.

8759		
C.	स Image seated नम	Woman standing : न.
89.0		
0.7		
13179		
C.	do. do. do.	do. दे.
81.5		
0.8		
7445		
C.	do. do. do.	do. No letters.
80.0		
0.7		
7772		
C.	do. do. do.	do. दे
93.0		
0.7		

DIKSHEMA GUPTA.

3399		
C.	दि Image जेम	Woman standing नम.
80.0		
0.7		

KASHMÍR.

13400

C. दि Image चेन

81.0

0.75

Woman standing गुप्त.

8757

C. do. do. do.

82.5

0.75

do. म...

7770

C. do. do. do.

98.0

0.75

do. —

NANDI GUPTA.

8856

C. न Seated image न्दिगु

81.0

0.7

Woman standing न.

TRIBHUVAMA GUPTA.

13401

C. त्रि Seated figure त्रुव

72.0

0.7

Woman standing गुप्त.

BHĪMA GUPTA.

13176

C. भी Seated figure भगु

85.0

0.75

Woman standing न.

DIDDA RĀṆĪ.

13177

C. दी Seated figure दिद

77.0

0.75

Woman standing दिव.



CSL

MEDIEVAL COINS OF INDIA.

13178	C. श्री Seated figure दिव			Woman standing देव
96.5				
0.75				
8762				do. do.
C. do. do. do.				
93.1				
0.75				
7771				do. do.
C. do. do. do.				
83.5				
0.7				

ANANTA.

13780	C. श्री Seated figure जय			Woman standing.
80.5				
0.7				
8760				do. and ज.
C. do. do. do.				
115.5				
0.75				
7773				do. देव.
C. do. do. do.				
89.0				
0.75				

KALASA.

7774	C. श्री Seated image जय(र)			Woman standing जदे(व)
94.0				
0.7				
8765				do. ज...
C. do. do. do.				
86.0				
0.7				

KASHMIR.

HARSHA.

8761					
C.	र Seated image है (रज)			Woman standing.	
78-0					
0-7					
7775					
C.	do.	do.	do.	do.	है(व)
101-5					
0-7					

JAYA SINHA.

8763					
C.	जय Seated image सि...			Woman standing.	
85-5					
0-75					

JAGA DEVA.

8764					
C.	जा Seated image ग			Woman standing.	
87-7					
0-7					
7776					
C.	do.	do.	do.	do.	है.
89-0					
0-7					
13781					
C.	do.	do.	do.	do.	
72-0					
0-7					

HINDU KINGS OF KABUL.
SAMANTA DEVA.

7522	S.	Bull, couchant, to l.; over it in	Horseman to r., to the left भौ.
50.5		Hindī चौसमन्तदेव. On rump of	
0.67		bull, a trident.	
7523	S.	do.	do.
49.5			
0.7			
7524	S.	do.	do.
50.0			
0.72			
7814	S.	do.	do. to r. ४
51.0			
0.75			
7815	S.	do.	do. to r. ५
45.0			
0.7			
7816	S.	do.	do.
48.9			
0.68			
7817	S.	do. Coarse.	do. to r. ४
48.0			
0.7			
7818	S.	do.	do. to r. ५
50.8			
0.7			
7819	S.	do.	do.
47.0			
0.7			



7820	S.	Bull, couchant, to l.; over it in	Horseman to r.
50·7		Hindí चौसमनदेव. On rump of	
0·75		bull, a trident.	
7821	S.	do.	do.
49·0			
0·74			
7822	S.	do.	do.
48·0			
0·76			
8190	S.	do.	do. to r. I
30·0			
0·7			
9108	S.	do.	do.
49·5			
0·71			
9109	S.	do.	do.
48·5			
0·7			
9110	S.	do.	do.
51·0			
0·7			
8191	C.	do. Legend partly gone.	do.
50·0			
0·52			
8493	C.	do. Poor.	do.
56·0			
0·55			



MEDIEVAL COINS OF INDIA.

CSL

8494		
C.	Bull, conchanted, to l.; over it in	Horseman to r.
30.0	Hindi चौसमनदेव. On rump of	
0.55	bull, a trident, poor.	
12602		
C.	do.	do.
50.5		
0.65		
7188		
C.		
46.8		
0.6		
7189		
C.		
49.5		
0.55		
7190		
C.		
45.0		
0.55		
7191		
C.		
49.0		
0.56	Bull, &c. Legend incomplete and	Horseman scarcely recognizable.
7192	in coarse, heavy letters.	
C.		
46.3		
0.6		
7193		
C.		
48.2		
0.56		
7194		
C.		
47.0		
0.55		
7195		
C.		
49.0		
0.55		

7196	}	Bull, &c. Legend incomplete and in coarse, heavy letters.	Horseman scarcely recognizable.
C.			
46.3			
0.56			
7197			
C.	}		
39.0			
0.6			
7198			
C.			
47.5	}		
0.62			
7199			
C.			
48.5			
0.55	}		
8782			
C.			
37.5			
0.75			
13360	}	do.	do.
C.			
35.0			
0.7			
13361			
C.	}		
34.0			
0.7			
13362	}	do.	do.
C.			
32.0			
0.7	}		

SYALAPATI DEVA.

7805	}	Bull, couchant to l., over it बीसलपति देव.	Horseman, to r., to l., H to r., f
AR.			
49.0			
0.7	}		



MEDIEVAL COINS OF INDIA.

CSL

7806	A.	Bull, couchant to l., over it बीखलपति देव	Horseman, to r., to l., श to r., र
51.0			
0.72			
7807	A.	do.	do. to l. H
51.0			
0.7			
7808	A.	do.	do.
49.0			
0.7			
7809	A.	do.	do.
50.0			
0.7			
7810	A.	do.	do.
45.0			
0.7			
7811	A.	do.	do.
48.0			
0.75			
7812	A.	do.	do. to l. Z
50.0			
0.67			
7813	A.	do.	do. do.
50.3			
0.68			
8701	A.	do. On jhul of bull double serrated mark.	do.
48.5			
0.75			
9107	A.	do.	do.
44.5			
0.72			



13363		
R.	Duplicate of 8701.	Horseman, to r.
54.0		
0.75		
13364		
R.	do. On rump (†)	Horseman, and to right some letters which look like old Nāgarī.
54.0		
0.8		

KHVADAVAYAKA,

13365		
47.0	Bull, over which बीखदवयकः	Horseman to r.
0.75		

VANKA DEVA.

7803		
R.	Elephant to l., and over it बीवक्त देव.	Lion to r.
36.1		
0.75		
7804		
R.	Poor duplicate of 7803.	
29.0		
0.7		

NOT ASSIGNED.

12745		
C.	Lion.	Elephant.
18.5	No inscriptions.	
0.55		
13202		
S.	Bull, couchant to l., with bridle adorned.	Horseman to r.: tassels on hind leg. No name.
50.0		
0.55		



COINS OF THE MAHARAJAS OF KANGRA.*

PITHAMA.

8625			
52.0	वीपीयन	In Hill Nāgarī.	Portions of a horseman to r.
0.55	चन्द्र देव		
8626			
55.5	do.		do.
0.55			
8627			
50.0	do.		do.
0.52			
8771			
55.6	do.		do. Very rare.
0.5			

APURVA.

8628			
49.0	Bull, seated, to left: above it	वीचपुरव.	Portions of a horseman to r.
0.55			
8629			
48.5	do.		do. Very rare.
0.5			
8630			
58.5	महाराज		Portions of a horseman to r.
0.55	वीचपुरव		
	चन्द्र देव		
8631			
55.0	Middle line only of 8630.		do.
0.54			
8774			
47.0	As on 8630.		do.
0.5			
12784			
47.8		do.
0.5	...वचन्द्र		
	देव		

* These coins are all of copper.



COINS OF THE MAHARAJAS OF KANGRA.

CSL
89

RUPA.

8632		
49.0	Bull, to left, seated: over it बीरप	Portions of a horseman to r.
0.5	च...	
8633		
51.0	do.	do.
0.55		
8775		
53.7	do.	do.
0.55		
8776		
38.2	do.	do.
0.5		
8641		
47.2	...प...	do.
0.5	च...देव	
8642		
53.5	Bull, to left, and perhaps, over it	do.
0.52	बीरप.	

SINGARA.

8634		
53.0	महाराज	Portions of a horseman to r.
0.55	बीसिंगार	
	चन्द्र देव	
8778		
49.4	महाराज	
0.5	बीसिंगार	do.
	चन्द्र देव	
12785		
47.8	do.	do. Common.
0.45		

MEGHA.

8777		
47.7	महाराज	Portions of a horseman to r.
0.5	बीमेव	Common.
	चन्द्र देव	



HARI.

8636			
52.0	महाराज		Portions of a horseman to r.
0.5	बीहरि		
	चन्द्र देव		
8637			
57.0	do.		do.
0.55			
8779			
8780	do.		do.
50.075			
0.55			
12492			
44.5		do.
0.5	बीहरी		
		

AVATARA.

8635			
57.0	महाराज		Portions of a horseman to r.
0.5	बीष्मवतार		
	चन्द्र देव		
8504			
43.5	महाराज		do.
0.5	बीष्मवतार		
	चन्द्र देव		
8773			
38.5	do.		do.
0.5			
12491			
47.5	do.		do.
0.5			

NARENDRA.

8772			
38.5		Portions of a horseman to r.
0.5	बीनरेन्द्र		V. v. rare.
	चन्द्र देव		



COINS OF THE MAHARAJAS OF KANGRA.

CSL
91

RAMA.

8639		
48.5	Bull to left, and over it बीराम?	Portions of a horseman to r.
0.51		

TRILOKA.

8638		
53.5	महाराज	Portions of a horseman to r.
0.55	बीरलोक	
	चन्द्र देव	
8781		
45.0	do.	do.
0.5		
12493		
51.5	do. Omitting last line.	do.
0.55		
12786		
53.0	As on 8638.	do.
0.55		
8640		
49.0	Bull to left, portions of unread name	Portions of a horseman to r.
0.51	over it.	

DHARMA.

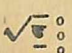
12475		
23.0	In square धर्म	Not legible: it should be
0.4	चंद्र	दुर्ग देवी

INDO-SASSANIAN COINS.

SILVER.

12477		
52.5	Rude head, Sassanian fashion, to right.	Rude fire altar.
average		
of two		
coins		
0.8		
8888		
55.0	Head of king to r. In front ▼	Fire altar and attendants, poor.
0.8		
13201		
58.0	do. do.	do.
0.8		
9106		
54.0	Rude head of king, scarcely discernible.	Portions of fire altar.
0.68		
12315		
58.0	Very coarsely executed, head of king to r., with bonnet on.	Rude fire altar with attendant on left side.
0.66		
12316		
58.0	do. Before king's face some letters or figures.	do.
0.7		
12317		
59.0	do.	do.
0.72		
12318		
55.0	do.	do.
0.66		
12319		
57.0	do.	do.
0.72		
12320		
55.0	do.	do.
0.7		

8464		
58.0	Head of king to r., in dotted circle.	Fire altar and attendants.
0.85		
8465		
57.0	do. in front ▼	Fire altar and female attendants: left
0.9		of flame, sun; to right, moon.
8477		
50.0	Rough head with bonnet to r.	Fire altar.
0.7		
8481		
43.0	Very poor.	Very poor.
0.6		
9251		
59.5		
0.9		
9252		
62.5		
0.95		
9253		
62.5		
0.9		
9254		
62.5		
0.875		
9255		
61.2	Head of king after Sassanian	A fire altar with sometimes sun and
0.9	fashion. No letters.	moon. No legend.
9256		
64.0		
0.95		
9257		
63.0		
0.89		
9258		
63.0		
0.88		
9259		
61.5		
0.87		

9260	}			
63.0				
0.92				
9261		Head of king after Sassanian fashion. No letters.	A fire altar with sometimes sun and moon. No legend.	
63.0				
0.9				
9262				
62.3				
0.9				
*8545				
58.5	 (P)	Portions of a fire altar.		
0.63				
8546				
61.5	Cut into two pieces.	Battered and rendered illegible.		
0.68				
8547				
57.0	As on 8545.	A rude fire altar scarcely recognizable.		
0.65				
8548				
57.5	do.	do.		
0.65				
8549				
58.7	do.	do.		
0.7				
8550				
58.0	do.	do.		
0.65				
COPPER.				
8466				
40.0	Head of king. (This coin was once silvered).	Fire altar poor.		
0.72				
8467				
56.0	do. Indistinct.	do. Indistinct.		
0.85				
8468				
54.0	do. Rude.	do. Rude.		
0.9				
8480				
56.0	Very indistinct. (Silvered).	Very indistinct.		
0.65				

* Coins 8545-8550 are the rudest of the Indo-Sassanian series.



GADHIYE KE PAISE.

SILVER.

7782			
62.8	Head of king, very coarsely executed.	Altar made of dots and strokes.	Sun
0.65	Snake in front.	and moon missing.	
7783			
59.2	Coarse duplicate of 7782.		
0.55			
brass			
12309			
60.5	Head of king to r. Back of head	Fire altar, sun and seven stars to left:	
0.6	and neck is a row of beads. Orna- ments on both sides.	moon and seven stars to right.	
12310			
62.7			
0.56			
12311			
62.7			
0.6			
12312			
63.0	do.	do.	
0.59			
12313			
60.5			
0.55			
12314			
62.7			
0.58			
10109			
60.0	do. Poor.	do. Poor.	
0.6			
10110			
62.0	do. do.	do. do.	
0.56			
10111			
60.5	do. do.	do. do.	
0.6			



CSL

MEDIEVAL COINS OF INDIA.

10112 63 0 0 6	Head of king to r. Back of head and neck is a row of beads. Ornaments on both sides. Fair.	Fire altar, sun and seven stars to left: moon and seven stars to right. Fair.
10113 61 5 0 5	do. Poor.	do. Poor.
8479 63 5 0 65	Head of king to r., snake near his nose and mouth.	Fire altar, with star in middle.
8482 64 0 0 65	Head of king, no snake, more of the head dress.	More of upper parts of the altar.
8514 60 0 0 65	Poor duplicate of 8479.	

COPPER.

8473 69 2 0 55	Rough head, with dots all round it.	Rough altar.
-----------------------------	-------------------------------------	--------------

VARÁHA COINS.

SILVER.

12476 55 0 average of two coins 0 66	वरह on one, on the other नददि...	Remains of ornaments and image.
8472 56 5 0 7	वरह	Upper parts of image of Varáha.
8476 55 5 0 65	बी नि	Unintelligible.
8478 52 5 0 65	...न...	Parts of image of Varáha.

8469		
60.0	Image of Varāha to right.
0.61	...रु...	
8470		
61.0	मद ..	Lower limbs of Varāha.
0.65	वरु	
8471		
57.0	Parts of above.	Image perfectly undistinguishable.
0.65		
8474		
41.0	Parts of above.	Parts of image of Varāha.
0.55		
8475		
52.0	do.	do.
0.6		
9981		
56.0	वरु	Image of Varāha, poor.
0.63		
9105		
57.0	वरु	Upper parts of image of Varāha.
0.6		
7784		
61.5	जी मददि	Image of Varāha to right.
0.75	वरु:	

KANAUJ COINS.

7777		
G.	<i>Srī Mad-Gobinda Chandra Deva,* in</i>	The goddess Lakshmī seated.
60.0	Nāgarī characters.	
0.65		
7778		
G.	do.	do.
62.0		
0.75		

* Govinda Chandra was king of Kanauj about 1100-1135 A.D. See Thomas' Chronicles of the Pathān kings of Delhi, p. 19, No. 16.



7420	<i>Sri Mad-Gobinda Chandra Deva</i> , in Nágari characters.	The goddess Lakshmi seated.
G.		
67.0		
0.75		
7421	do.	do.
G.		
67.2		
0.7		
8485	do.	do.
G.		
73.5		
0.75		
8489	do.	do.
G.		
56.5		
0.73		

CHEDI COINS.

9217	<i>Sri Mad-Gängeya Deva</i> ,* in Nágari characters.	The goddess Durgá seated.
G.		
63.5		
0.71		
11052	Probably a duplicate of Gängeya Deva's coin, No. 9217.	Lakshmi seated.
G.		
62.5		
0.76		
11053	do.	do.
G.		
63.0		
0.75		
11054	do.	do.
G.		
63.0		
0.725		

* Gängeya was king of Chedi, 1020-40 A. D. See Sir A. Cunningham's *Archæological Survey Reports*, Vol. IX, p. 112.

CHANDEL COINS.

7512		
G.	Probably a duplicate of Gāngeya	Lakshmi seated.
61·0	Deva's coin, No. 9217.	
0·76		
7517		
G.	do.	do.
61·7		
0·78		

CHANDEL COINS.*

8486		
G.	<i>Sri Mad-Vira Varma Chandra Deva</i>	Lakshmi seated.
74·5	in Nāgarī characters.	
0·71		
8487		
G.	<i>Sri Mat-Triloka Varma Deva</i> , in	do.
63·0	Nāgarī characters.	
0·7		
8488		
G.	Duplicate of 8487.	
59·0		
0·7		
(iron loop)		
8483		
Brass	<i>"Sri Mat-Kirtti Varma"</i> in Nāgarī	do.
31·0	letters.	
0·7		
8490		
G.	<i>Sri Mat-Paramārdi</i> ?	do
61·2		
0·7		

* See Sir A. Cunningham's Archaeological Survey Reports, Vol. II, p. 451, and Vol. X, p. 24, for the list and dates of the Chandel Rājas.

UNDETERMINED COINS.

7779		
G.	" <i>Sri Mat-Kumara Pála</i>" * in	Lakshmi seated.
62.0	Nāgarī letters.	
0.7		
8484		
C.	गोविन्दचण्ड... †	Illegible.
70.5		
0.65		

* No *Kumara Pála* seems to be known. There is an *Amara Pála* mentioned as king of Magadha Archaeological Survey Reports, Vol. III, p. 133.

† This coin has never been assigned to any one. It is often found in Panjáb bázárs, but has puzzled every numismatist from General Sir Alexander Cunningham downwards.



CSL

MISCELLANEOUS NORTH-INDIAN COINS.



CSL

MISCELLANEOUS NORTH-INDIAN COINS.

MISCELLANEOUS NORTH-INDIAN COINS.

	Page.		Page.
Nepál 103	Náhan 119
Asám 109	Rutlám 120
Tipperah 116	Kutári Ka Paíse <i>ib.</i>
Jayantípúr... 117	Kashmír and Jummún	... 121
Bhután <i>ib.</i>	Chambá 122
Manípúr 118	Western Panjáb <i>ib.</i>
Bhílwára <i>ib.</i>	Unassigned 123
Choṭa Udípúr 119		

MISCELLANEOUS NORTH-INDIAN COINS.

NEPAL.

13466 C. 203.0 1.05	Lion to l., right paw raised. Legend indistinct.	Seated figure, r. hand raised. Legend <i>Sri Bhogini</i> in old Nāgarī. See "Coins of Ancient India" by Sir A. Cunningham, Pl. XIII, fig. 1.
7707 C. 203.0 1.05	do.	do. Legend illegible and figure not discernible.
7708 C. 186.5 1.0	Lion to l., no legend.	As on 13466.
7727 S. 83.5 1.09	In a small square, <i>Sri Lakshmi Nara Sin</i> and a shell. Above the square, a drum; round the square, some Nāgarī characters illegible. The whole in a double circle, with one of dots between.	In a small circle, a trisūl and ornaments. Above it, <i>Sri</i> ; round it, unintelligible signs which are intended perhaps for Nāgarī letters. No year.
7728 S. 83.0 1.05	In small square:— <div style="text-align: center;"> <p>सौमित्रा</p> <p>पद्म</p> <p>← ३</p> </div> Around and above square, as on 7727.	As on 7727.

7729 S. 84.0 1.07	In scalloped square, in centre of coin :— बीबीजय सुपतिन्द्र महादेव Outside the square, below ८७४=874?	A variant of 7727.
7730 S. 88.0 1.1	In scalloped square, in centre of coin :— बीबीजय रणजित महादेव Below ८४२=842?	As on 7727, varied.
7731 S. 80.0 1.0	Four elongated hexagons, in middle of which is a four-sided figure formed of arcs of circles. In hexagons and spaces are बीरजयमहोप. In four-sided figure, a trisūl.	A sword surrounded by a canopy, and तेन्द्रमहादेव.
7732 S. 85.5 0.98	The surface is divided into 3 parts by — ३ — (imitation of Arabic) legend: बीबीकबीन्द्रजय. The Arabic looks like <i>Jahāngīr Shāh</i> and <i>Ilahī</i> .	Arabic letters الله — and legend. प्रतापमहा ७७६=776.
7733 S. 85.0 1.0	Small circle in centre contains wheel and shell and flowers. To r., in outer circle is a bow, to l., 5 arrows. बीजय चक्रव.	In centre an equilateral triangle: about it: तेन्द्रमहादेव. ७८९=789.
7734 S. 86.0 1.09	In a small circle a trisūl and बीबीजय भास्कर. In outer circle ornaments in small areas.	In inner circle, sword and wreath and महादेव ८२१=821?
7735 S. 83.0 1.0	In small circle, a trisūl and बीबी and ८२९=829. In outer circle :— जय बीरमहोन्द्रमहा	In small inner circle :—Sword and wreath on l., moon; on r., sun. In outer circle :— बीबीकीकनाथमहा.

7736

S. In small circle, with trisūl **श्रीश्रीजय**
83.5 **सद्योन्म**. In outer circle, ornaments.
1.05 Jaya Mahendra is probably the same
as the above on 7735.

In inner circle with sword and wreath
सिंहदेव ८२६ = 836.
In small areas, in outer circle **नेपाले-**
चरगिरिन्द्र

7737

S. In small circle, with trisūl **श्रीश्रीजय**
83.5 **जगज्जय**. In outer circle small areas
1.06 with ornaments.

In small inner circle, sword and wreath
and **सद्योन्म** and **८७२** = 872 ?

7738

S. In small circle, with sword **श्रीश्रीसिद्धी**.
87.5 Around as on 7727.
1.1

In inner circle:—A lion to L. Above
नर, below **सिंह**. Barbarous ornaments.

7739

S. In hexagon, formed by the intersec-
84.5 tion of two equilateral triangles,
1.0 together with sword and wreath
श्रीश्रीजय. In small triangles **श्रीनिवा-**
समज्ञ.

The plan of a temple, in a circle, with
a small circle in it, in which is **७८४**,
784. Between small circle and plan,
पाचलखर.

7740

S. A geometrical figure like a *svastika*
84.0 composed of central square, a paral-
0.98 lelogram on each side and a trian-
gle at the end of each parallelo-
gram. In upper parallelogram
श्री. In central square, **लोकनाथ**.
In other parts **श्रीश्रीयोगनिरंन्द्रमहदेव**
above **संगी**. To left **ताव**. To r., **पा**.
Below, **रग**. The year comes with
पा but is smudged.

An equilateral triangle has its apex in
the base of an equal equilateral tri-
angle. A rhombus is described with
sides parallel to those of the rhombus
formed by the triangles. Legends:—
श्रीप्रतापलक्ष्मीदेवी and **श्रीनरंन्द्रलक्ष्मीदेवी**
८०६ = 809.

7741

S. Sword and wreath, in middle: sun,
75.0 moon and stars above. On either
0.98 side **श्रीश्रीजय योगनरंन्द्रमह**. There is
another legend, **संगीताक्षीपारम**

Trisūl in middle of coin. **श्रीश्रीवीरयोग-**
नरंन्द्रमह ८१०. Outside this, letters
form **नेपालचुडासि**. $820 + 870 = 1690$
A. D.

7742

S. In a square, in a circle, sword and
83.0 wreath and **श्रीश्रीलोकनाथ**. Outside
1.0 square, **श्रीश्रीजय ७००न्द्रमहदेव**.

In square, with an arc in each side;
Trisūl and wreath and **श्रीभगवतीदेवी**
८१४, 824.

7743

S.
78-0
1-02

In a square, as on 7742. Each side of the square has a gothic arch on it. In these and other spaces:—
 खैखैवीरनरसिंह मल्लदेव.

Four small equal equilateral triangles make one equilateral triangle. In the central triangle is a trisūl. In the rest and the segments:—खैखैवीरमतीदेवी. Date smudged.

7744

S.
85-5
1-01

In small circle with trisūl:—खैखै जययो and ८७२=872. 8 petals are attached to the circle: in them:—
 गप्रकाशमल्लदेव

In small circle, sword and wreath. In trefoils in outer circle:—खैखैखै करणमय.

7745

S.
82-5
1-05

In centre, trisūl: in field:—खैखै जयवियुक्तमल्लदेव ८७९=879.

In 8-foil sword and wreath and खैखैखै लोकनाथ. Outside 8-foil खैजयवीरयोग नरेन्द्रमल्लदेव.

7746

S.
83-0
1-0

In a circle, a large square, in which is a square, half its size, which has one in it half its size. In innermost square a sword and wreath. In outer segments:—खैजय लोकप्रकाशमल्लदेव. In square corners खैखैखैकरनामय.

In centre, a quatrefoil with trisūl. Two equal equilateral triangles form a star; in spaces:—खैखैयोगमतीदेवी. ८१७=827.

7747

S.
83-0
1-0

In centre, trisūl; खैखै لب जय ८७६
 खैखै

खैखै देव ७९६=796.

7748

S.
85-0
1-08

In centre a small square, with eight ornaments attached. In square:—
 १३८=1378? perhaps १६८=1678. No king's name.

Double circle in centre enclosing a tree? In outer circle 8 lozenges, each with its distinctive sign.

7749

S.
84-0
1-16

Square in double circle which encloses one of dots. Segments ornamented, lower one having date १६९१. In centre of square a circle with trisūl. In square:—खैखैशिवीनारायणसाह देव 1691 Śāka.

In circle sword and wreath, and खैखै भवानी. In petals attached to circle खैखैखैगीर-
 मल्लदेव.

7750	S.	As on 7749, but name प्रतापसिंह and date १९८१.	In inner circle:—बीबीगहोखरी. In petals as on 7749.
84.0	1.1		
7751	S.	In circle बीरराजराजेश्वरी देवी, round a temple.	In middle, trisūl. बीबीभवानी १०११ = 1712 Śāka.
20.3	0.65		
7552	S.	Similar to 7749, but legend:—बीबी रणवहादुरसाह देव १०११ 1712 Śāka.	As on 7749 but बीर.
169.2	1.0		
7753	G.	Similar to 7749, but legend:—बीबी गौवणयुद्ध विक्रमसाह देव १०१४ 1724 Śāka.	As on 7749.
84.5	1.0		
7754	S.	As on 7753, but year १०३० 1737 Śāka.	As on 7552.
85.5	1.05		
7755	S.	As on 7749, but legend:—बीबीराजेश्वरी विक्रम &c., and date १०४२ 1742 Śāka.	do.
85.7	1.06		
11941	S.	do. but date १०४९ 1746 Śāka.	do.
84.3	1.08		
12211	S.	do. but date १०४५ = 1745 Śāka.	do.
83.5	1.08		
7158	S.	As on 7755, but date १०३८ = 1738 Śāka.	As on 7755.
82.8	1.06		



MISCELLANEOUS NORTH-INDIAN COINS.

CSL

11045	G.	As on 7755, but legend is:— बीबी-सुरेन्द्रविक्रमसाहदेव. Date १७८४ 1784 Saka.	As on 7755.
191.5			
1.07			
11046	G.	As on 7755, but legend is:— बीबी-सुरेन्द्रविक्रमसाहदेव. Date १७८४ 1784 Saka.	As on 7755.
85.5			
1.04			
11047	G.	Trisúl in small circle. In outer circle a moon and sun and बीबी-सुरेन्द्रवि.	In small circle a sword and wreath. In outer circle:— क्रमसाहदेव १७८० 1780 Saka
42.5			
0.78			
11048	G.	Round a temple बीसुरराजलक्ष्मीदेवी.	In inner circle, trisúl. बीबीभवानी १७८०.
22.0			
0.71			
11049	G.	Dotted circle, in which a lined circle encloses a naked sword and a crescent, बी sun, सुरेन्द्रवि	Circles dotted and lined. क्रमसाहदेव, round †.
11.0			
0.6			
7756	G.	do.	do.
10.8			
0.56			
11050	G.	Legend as on 11049.	As on 11049.
5.3			
0.5			
11051	G.	बीसुर	Blank.
1.0			
0.3			
7160	S.	As on 11045, but year १७७८ 1778 Saka.	As on 11045.
84.0			
1.07			
11860	S.	do. Year १७८४=1784, Saka.	do.
84.0			
1.05			

10790	S.	As on 11045, but year १७८० = 1780,	As on 11045.
85·0		Sāka.	
1·08			
11861	S.	In a circle, with dotted circle outside ;—crescent बीबी sun बीसुरेन्द्र round a trisūl.	In circles :— क्रमसाहदेव १७८७ (1787 Sāka) round a sword and wreath.
42·0			
0·78			
12211	C.	In a square :— बीबीबी , &c., as on 11045 and date १७६२ 1762 Sāka.	In a square :— बीबीबीनेपाल . सकार . In segments ornaments.
84·5			
0·9			
8586	C.	do. but date १७९९ 1799 =	do.
85·2		Sāka.	
0·88			
12197	C.		
19·5			
0·52			
12198	C.	बी In a circle.*	स In circle.
21·0		नेपा	कार
0·52		ल	दर
12199	C.		
20·0			
0·51			

ASĀM.†

7710	S.	बीबीसू	बीबीद
175·5		गैनारायंशी	रि हरचर
0·8		देवय्य राके	न पराय
octa-		१५७० = 1570 Sāka.	णय्य. (1648 A. D.)
gonal.			

* These small coins are called "Phoka Dams."

† The legends on these coins of Asām are almost always in Bengālī letters.

MISCELLANEOUS NORTH-INDIAN COINS.

RUDRA SIMHA, 1669-1717 A. D.

7711			
S.	खीखीमत	खीखीच	
174.0	खर्गदेवचक्र	रगौरौप	
0.9	सिंहस्थापन	दाम्बुजमधु	
oct.	के १६२१=1621 Sāka.	करस्य.	(1699 A. D.)
11831			
S.	As on 7711, but year १६२२=1623	As on 7711.	
177.0	Sāka.		
0.88			
oct.			

PHULESVARI, WIFE OF SIVA SIMHA, 1723-26 A. D.

7712			
S.	खीखीशिव	खीखीच	
175.5	सिंहस्थापन	रगौरौपद	
0.93	खी खीफुलेख	परायणायाः	
oct.	रोदेयाः	शाके १६४६=1646 Sāka. (1724 A. D.)	
		An animal.	

PRAMATHESVARI, WIFE OF SIVA SIMHA, 1729-30 A. D.

7713			
S.	खीखीशिव	As on 7712, but year १६५२=1653 Sāka.	
175.5	सिंहस्थापन		
0.9	खी खीप्रमथेश		
octa-	रोदेयाः		
gonal.			

SARVESVARI, WIFE OF SIVA SIMHA, 1738-43 A. D.

7714			
S.	खीखीशिव	उद्वज	
87.5	वासिंहन	भखीसखे	
0.65	रेखर	खरीदेवीन	
oct.		रत	

PRAMATHA SIMHA, 1744-51 A. D.

7715		
S.	बीबीखर्ग	बीबीहर
175-0	देवप्रमत्त	गौरीचरण
0-9	सिंह दपस	कमलमथ
oct.	शके १६६८ = 1668 Sāka.	करस.
		(1746 A. D.)
7322		
S.	do.	do.
172-0		
0-9		
oct.		
7716		
S.	बीबीप्र	बीबी
87-0	मत्तसिंह	मिवपद
0-65	दपस	परस
oct.		

RAJESVARA SIMHA, 1751-71 A. D.

7717		
G.	बीबीरा	शके
44-2	नेहरसिंह	१६७७ = 1677 Sāka. (1755 A. D.)
0-5	दपस	
oct.		
7718		
S.	बीबीखर्ग	बीबीमाहे
173-5	देवबीराजेश	गौरीचरणक
0-82	रसिंहदपस	मलमकरन्दम
octa-	शके १६७५ = 1675 Sāka.	धुकरस.
gonal.	This is in Nāgarī letters.	An animal to L. (1753 A. D.)
11856		
S.	do.	do.
175-0		
0-8		
oct.		
11832		
S.	बीबीरा	शके
41-0	नेहरासिंह	१६८९ = 1689 Sāka. (1767 A. D.)
0-55	दपस	
oct.		



11833

S.
44.5
0.5
oct.

बौद्धोरा
जयरासिंह
हपस्य

शाके but year.
१६७६ = 1679 Saka. (1757 A. D.)

11834

S.
10.8
0.32
oct.

बौरा
जयरा

सिंह
हपस्य

LAKSHMI SIMHA, 1771-79 A. D.

7719

G.
40.8
0.5
oct.

बौद्धोरा
बौद्धोरा
हपस्य

शाके
१६६२ = 1692 Saka. (1770 A. D.)

7720

S.
175.5
0.88
oct.

बौद्धोरा
देवबौद्धोरा
सिंहहपस्य
शाके १६६२ = 1692 Saka.
Animal to r.

बौद्धोरा
गौरीचरणार
विन्दमकरन्द
सधुकरस्य. (1770 A. D.)

7822

S.
175.5
0.9
octagonal.

बौद्धोरा
देवबौद्धोरा
सिंहहपस्य
शाके १६६४ = 1694 Saka.
Animal to r.

बौद्धोरा
गौरीचरणार
विन्दमकरन्द
सधुकरस्य (1772 A. D.)

11835

S.
72.6
0.7
oct.

बौद्धोरा
बौद्धोरा
नरेन्द्रस्य

बौद्धोरा
रगौरीप
हपस्य

11836

S.
79.5
0.65

do.

do.

11837	S.	बीबील	शॉके
43.7		कौसिंह) १७०१ (=1701 Saka. (1779 A. D.)
0.56		हपस्य	
11838	S.	बीबील	सिंह
22.5		कौ	हपस्य
0.41			
oct.			
11839	S.	do.	do.
22.5			
0.41			
oct.			
11840	S.	do.	do.
11.0			
0.32			
oct.			
11841	S.	बीबील	सिंह
11.0		कौ	हपस्य
0.32			
octa- gonal.			

GAURINATHA, 1779 A. D.

7721	G.	As on 7720, but king's name:—गौरी- नाथसिंह and year १७१६ = 1716 Saka.	बीबीलर गौरीचरणक मलसकरन्द मधुकरस्य	(1794 A. D.)
174.0				
0.85				
octa- gonal.				
7722	G.	बीबीगौ	बीबीर	
85.0		रीनाथ	रगौरीप	
0.6		हपस्य	हपस्य	
oct.				



MISCELLANEOUS NORTH-INDIAN COINS.

CSL

7723			
S.	As on 7721, but year १७०५ = 1705	As on 7721.	(1783 A. D.)
174	Sáka.		
0.9			
oct.			
11842			
S.	do. but year १७०९ = 1709	do.	(1787 A. D.)
173.5	Sáka.		
0.83			
oct.			
11843			
S.	do. but year १७१९ = 1716	do.	(1794 A. D.)
175.5	Sáka.		
0.9			
oct.			
11844			
S.	बीबीगो	बीबीह	
84.0	रीनायसि	रगोरीप	
0.65	दरपस	दपरस	
oct.			
11845			
S.	बीबीगो	बीबीह	
87.0	रीनायसि	रगोरीप	
0.7	दरपस	दपरस	
octa- gonal.			
11846			
S.	बीबीगो	(
44.5	रीनायसि	शाने	
0.58	दरपस) १७०९ (=1703 Sáka. (1781 A. D.)	
oct.		(
11847			
S.	do.	do.	
44.5			
0.56			
oct.			
11848			
S.	बीबीगो	सिंह	
22.0	रीनाय	दरपस	
0.44			
oct.			

11849

S.

चीखीगो

सिंह

22-0

रौनाथ

हपस

0-45

oct.

11850

S.

do.

सिंह

22-0

पस.

0-42

oct.

11851

S.

खी

रीना

4-6

गो

थस...

0-22

oct.

BHARATA, 1792 A. D.

11857

S.

खीभगदत्त

खीखीहण

175-0

कखीद्वरखीभ

चरणारविन्द

0-85

रथसिंहहपस

मकरन्दप्रभत्त

oct.

शके १७१४ 1714 Saka.

मधुकरस.

(1792 A. D.)

7724

S.

do.

but year १७१८=1718

do.

(1796 A. D.)

176-5

Saka.

0-9

oct.

KAMALESVARA SIMHA, 1808 A. D.

7725

S.

As on 7717, but name of king:—

खीखीह

87-5

कमखीहसिंह

रगोरीचर

0-65

No date.

थपरस.

oct.

CHANDRAKANTA.

11852

S.

खी

कान

5-3

ख

ख

0-29

x-25

oval.



BRAJNATHA SIMHA.

11853

S.
175.0
0.9
oct.

बौद्धीखर्ग
देवबौद्धजन।
यसिंहद्वपस्य
शके १७३९ 1739 Saka.

बौद्धीराधा
द्वयचरणक
मल्लमकरन्द
मधुकरस्य

(1817 A. D.)

7726

S.
175.0
0.9
oct.

do. but year १७४० = 1740
Saka.

do.

(1818 A. D.)

UNREAD.

7709

S.
175.0
0.9
oct.

Both sides of this coin are covered with Ahom characters. They are a kind of debased Nāgarī. On one side is a four-legged animal like the one on the Asām coins. This coin, therefore, is probably a coin of Asām. It is similar to the one given in Marsden, Pl. LIII, No. MCCXXI.

TIPPERAH.

7757

S.
162.0
1.0

A circle with margin of circles, each enclosing a large circular dot. In circle a lion to l., with a trisūl on his back, a star of 4 rays in front and behind. शके १७२८ = 1728 Saka.

A square area, with ornamented segments. In square:—

शिवदुर्गापदे
बौद्धीयनरास
गङ्गामानिक्य
देवबौद्धिता
रामदादेवौ.

(Rām, Ganga, Mānikya, and Tārā his wife.)

JAYANTIPUR.

JAYANTIPUR.

11855	S.	* श्रीश्रीज	Both sides in double	† श्रीश्रीलि	A long	
150.5		यन्नीपुरपु	circles with one of	वचरलक	sword	
1.1		रन्दरय्यशा	dots between.	मलपरर		
		के १६३० = 1630 Sāka.		रय्य		(1708 A. D.)
11854	S.		do. But two letters in middle			
148.0			of 2nd line deleted.			
1.19			१६५३ = 1653 Sāka.			
7759	S.		do. No deleted letter, and			
117.3			date १६३० = 1630 Sāka.			(1708 A. D.)
1.2						

BUTAN.

13468	S.	In a circle, with dotted circle outside	بتان	
32.0		محمد شاه.	Rest illegible.	
0.87				
13469	S.	In a circle:—	بتان	
29.0		रज). ११.०८	
0.85		गलव	روان	do āne, or rawāne.
		विद्या		
13470	S.	do.	do.	
27.5				
0.85				
13471	S.	रज	do.	
24.0		गलव		
0.87		सिद्धा		

* Should be in Bangālī.

श्रीश्रीज
यन्नीपुरपु
रन्दरय्यशा
के १६३०

† Should be in Bangālī.

श्रीश्रीलि
वचरलक
मलपरर
रय्य



MANIPUR.

12200			
C.	मा		Blank.
10.2			
0.35			
12201			
C.	do.		do.
12.5			
0.4			
12202			
C.	do.		do.
10.6			
0.37			
12203			
C.	do.		do.
10.6			
0.35			

BHILWARA.

12236			
C.	A line with 2 letters attached ?	A
220.8	zigzag line.	
0.71			حلوہ...
12237			
C.	بالد	
248.0	Two zigzag lines.	
0.76			ناندع
12238			
C.	سا		do.
241.3	سا		
0.73			
12239			
C.	سا		As on 12236.
245.0	سا		
0.75	حا		

CHOTA UDIPUR.*

12280	C.	चप...	काच ?
217-0		_____	बाघ...
1-1			
12281	C.	_____	Unintelligible.
207-0		...उ...	
1-0			
12282	C.	???	बौद्ध
115-0		_____?
0-9		१०८०	
12283	C.	प्रचप	Unintelligible.
114-0		_____	
0-9		...च...	

NĀHAN.


12660	C.	In double circle, with circle of dots between.	In double circle, with circle of dots between.
270-1		_____	_____
1-0		ملزم بهادر شاه مہاراجہ کبریاں جودہ	ضرب ناھن میمنت ۱۲۲۷ (1227 H.) A kitār after ناھن
8846	C.	A good duplicate of 12660.	
272-0			
1-05			
8845	C.	Unintelligible.	ضرب ناھن ۱۸۷۷ (Nāhan 1877 Sam.) After ناھن a bow and arrow to l.
300-0			
0-9			

* The inscriptions are in barbarous letters, partly of Bengālī and partly of Devanāgarī origin.

† The "malzim" (ملزم) Bahādur Shāh was a Gurkhā general who held Nāhan in 1227 H. (1812 A. D.) for his master, the Mahārāja of Nepāl Girvān Juddh (گیروان جودہ). This coin is therefore most valuable as it gives us the names of both these men. Coin 8845 must have been struck in 1877 Samvat = 1820 A. D.

MISCELLANEOUS NORTH-INDIAN COINS.

RUTLĀM ?

12184	C.	Central sun, with four others round it.
113.5	मप...		
0.75	तम...		
square			
12185	C.	बी—	Two whole suns, parts of three others.
113.5	पदबी		
0.75			
× .5			
oblong			
12186	C.	पर =	One sun, parts of two others and part of a 
0.75			
× .46			
oblong			
12187	C.	Nothing legible.	Parts of rayed suns.
0.7			
× .32			
oblong			

KUTARI PICE OF BARREA.

12212	C.	बा	شا
134.0	... ५२		
0.83			
× .7			
egg-shaped			
12213	C.	बा	شا
128.5	A pomegranate ५२		بادغا
0.76	شیر		
12214	C.	کبرشا
65.0	ح A pomegranate.		
0.6		
triangular			

12215

C. ∴ A circle.
 79.0
 0.6
 nearly
 square

شا

KASHMÍR AND JUMMÚN.*

8914

S. رنجیت دیو آباد کرد
 172.8 لچمی نرائین دلرا شاد کرد
 0.95 1841 S. (1784 A. D.)

ضرب دارالامان جموں
 سنہ ۲۸ جلوس میہنت مانوس

11760

S. سرے
 166.5 رگو ناتھہ
 0.81

... لور ...

(ض)

۱۹۰۴

1904 S.

Leaf

شہر

Srinagar.

8683

C. In Thākuri:—*Srī Raghunāth Jī*
 530.0 *Sahāī.*

ضرب جموں سمیت ۱۹۱۷
 1917 S. (1860 A. D.)

1.25

hexa-
gonal

11602

S. A quatrefoil enclosing a cross
 108.5 سري a star
 0.87 رگناتھ جي مہا

In Thākuri:—*Srī Raghunāth Jī Sahāī.*
Jarb Srinagari. Sam. 1929.

ضرب سري نگر

19 J. H. S. ۲۹

11603

S. do.
 108.5
 0.9

do.

* The 27th year is that of Shāh 'Alam II. Jummūn was the last place north of the Sutledge that remained loyal to the Emperor of Delhi.



CHAMBA.*

8685	C.	In a circle:—	In a circle:—
80.0		चौचढ (Chaphat Sinh.)	चौल
0.8			कौनाथ
		नसिंह	सदाई
		खेय सुद्धा †	After ई comes चं
8686	P P		
C.		चौखच (मौ)	चौसुद्र... (?)
65.5		...००...	००...
0.7	

WESTERN PANJAB.

7454	C.	Image of a cat to r., date obliterated.	In double circle.
143.5			راج
0.9			
8854	C.	In treble circle 119v <i>div</i>	In treble circle.
83.0			جائیز
0.7			
9084	C.	Rust.	In double circle:—
72.0			جائیز
0.65			

UNASSIGNED COPPER COINS.

8595			
10.0		An image standing facing.	Hexagram, in a scalloped circle, in a circle of dots.
0.35			
8581			
144.0		س	Trisul.
0.65		ش...	Fragments of letters.

* These coins are nearly always double struck, and in consequence illegible. No. 8686 is very unsatisfactory.

† Or खेय



UNASSIGNED COPPER COINS.

8847		
175.0	In incuse circle :—	Blank.
0.8	روایج ۸ فت الو	
9949		
112.0	...فلوی...	...فلوی...
0.8		
9165		
85.5	Legend fragmentary.	Legend fragmentary.
0.6		
square		
9164		
95.0	The Kalima.	The Kalima.
0.55		
×.5		
oblong		
8921		
149.0	Something like Arabic letters. Ille-	Illegible.
0.7	gible.	
9168		
125.5	Imitation of coin of Ghiyās Sháh,	
0.65	son of Mahmúd Sháh <u>Khilji</u> .	
×.55		
(brass)		
9167		
126.0	do.	
0.6		
×.55		
(brass)		
8506		
107.0	Double struck, illegible.	Double struck illegible.
0.8	The style of the coin proclaims it	
×.65	one from Afghanistan.	
9835		
104.0	Circular area :—An animal, not	Circular area :—An animal, not identi-
0.8	identified. Margin illegible.	fied. Margin illegible.

9836 to 9871 39.0 to 7.52 36 coins	Drops of copper, stamped on both sides with kufic legends all illegible. Edges convex.	Some have عدل, some a geometric device. No king's name on either side.
9834 47.0 0.62	Illegible legend covered the whole coin, and was in Arabic.	As on obverse. Perhaps it reads,— فیروز شاه
9054 to 9066 6.5 0.33 to 0.2 0.25 13 coins	Illegible remains of Arabic words. 9065 has perhaps محمد on both sides.	Perhaps an image.
9960 average 2 coins 13.0 0.35	A Bull to l., in circle of dots.	Sanskrit legend, fragmentary and illegible.
9294 114.6 0.6	An oval containing 9 dots. Illegible Persian legend surrounds it.	As on obverse.
10009 47.0 0.55	King on horseback galloping to r., both hands outstretched.	चक्रवर्ती (?).
9978 48.0 0.61	Bull; over it बीडवीस on rump of bull. (Perhaps a coin of Ibrāhīm of Ghazni or of Rukn-ud-dīn Ibrāhīm.)	Horseman to r., and बीडवीस
9295 180.0 0.7	سفر حسنة علي (Perhaps Safdar 'Alī of Arcot.)	اعد لست

9296		
182.0	سکندر قادري	خسرو گیتی
0.75	ن سا
9297		
178.0	Fragmentary illegible Persian legend.	As on obverse.
0.67		
*12566		
58.0	गोविंद च	ही चम्प
0.65	रण प्रण म देव	कारणे Ornament above and below.
*12567		
68.5	do.	do.
0.65		
8433		
13.0	मि	Blank.
0.4		
8434		
10.0	मि	Blank.
0.4		
+12607		
47.5	Horseman to r., and over it <i>Chhajú</i> .	Bull and legend cut.
0.55		
†12321		
77.5	A rude image wearing clogs.	A rude image with a ruder bow.
0.78		
†12322		
78.0	do.	do.
0.82		
12209		
275.0	عالم سید	فد سیدی
0.85	...	لونا اسکا

* These two coins are common in the Panjáb, but no one has yet been able to assign them to any country or Rája.

† The name is Chhajú. It may be a coin of Malik Chhajú, the nephew of Balban, who rebelled in the 2nd year of Jalál-ud-dín Fíroz, (1201 A. D.).

‡ These two coins were cast as is seen from a small bar on the edge of each. They must have been cast in rows.



MISCELLANEOUS NORTH-INDIAN COINS.

CSL

12210		
278.0	شاه عالم	ده ۷ ع حی
0.87	نیلں اکا
8218		
117.3	A circle of dots, with trisul in it.	Blank.
0.75		
8219		
50.0	A circle of dots in which is a flower.	do.
0.55		
nearly		
square		
8220		
109.0	A flower in an incuse mark.	do.
0.68		
x.48		
oblong		
mark		
8221		
105.0	A flower with dots round it.	Blank.
0.68		
8222		
65.0	do.	do.
0.5		
square		
12180		
142.5	In a circle a katár horizontal to r.	In a circle with dots outside small
0.7	Under it v.	portions of uncertain figure.
12181		
192.0	الف	Double circle with one of dots between.
0.74		In inner circle a व or त.



CSL

MISCELLANEOUS SOUTH-INDIAN COINS.



MISCELLANEOUS SOUTH-INDIAN COINS.

CSL

MISCELLANEOUS SOUTH-INDIAN COINS.

	Page.		Page.
Coins of Vijayanagar	... 129	Unassigned Coins	... 142
Travancore and other Coins	... 136		



CSL

MISCELLANEOUS SOUTH-INDIAN COINS.

COINS OF VIJAYANAGAR.

11011	27·0	God and goddess seated.	बी प्र
	0·41	Ruler's name, <i>Harihara</i> .	तापहरि
			हर
11012	26·0	do.	do.
	0·4		
10997	52·0	Vishnu seated.	बी प्रा
	0·45	Ruler's name, <i>Krishṇarāya</i> .	तापक प्र
			राया
11000	52·0	do.	do.
	0·45		
11001	52·0	do.	do. (Called <i>Satary</i> .)
	0·45		
11002	52·0	do.	do. From Tanjore.
	0·45		
11003	50·0	do. Coarse.	do. do.
	0·45		
11004	50·0	do. do.	do. do.
	0·45		

MISCELLANEOUS SOUTH-INDIAN COINS.

11007		
51.0	Vishnu seated.	श्री प्रा Old Madras.
0.5	Ruler's name, <i>Krishnaráyā</i> .	नापन्न अ राया
11008		
51.0	do.	do. do.
0.5		
11009		
52.0	do.	do. do.
0.45		
11010		
51.0	do.	do. do.
0.55		
7787		
51.0	do.	do.
0.6		
9044		
52.3	do.	do.
0.45		
7788		
53.0	Two-figures seated.	do.
0.42		
7796		
53.1	do.	do. ?
0.4		
7797		
52.3	do.	do.
0.4		
10996		
52.0	Vishnu standing under a canopy.	श्री वंक
0.43	Ruler's name, <i>Venkata</i> .	ट खरा यन्न
11005		
52.0	do.	do. From Tanjore.
0.45		



11006		
26·0	Vishnu standing under a canopy.	श्री वैष्णव
0·38	Ruler's name, <i>Venkata</i> .	देवरायन
7789		
52·0	do. but seated.	do.
0·5		
×·4		
oval		
7790		
52·4	Double-headed bird, holding an elephant in each beak, and in its claws.	श्री प्रताप
0·41	Ruler's name, <i>Achyutarāya</i> .	राय
7793		
25·6	Vishnu four-armed, standing under a canopy.	Illegible, but probably :—
0·4	Ruler's name, <i>Rāma Rājā</i> ?	<i>Rāma Rājā</i> .
10993		
26·0	do. do.	do.
0·4		
10994		
26·0	do. do.	do. Forgery.
0·4		
7786		
58·0	Fore-quarters of an elephant to r.	Arabesque.
0·5	A Gajapati pagoda or hun of S. W. India.	
7792		
52·6	Image with umbrella over head.	Five-rayed star on granulated field.
0·4		
10988		
40·0	do.	do. Alloyed.
0·43		
10989		
32·0	do.	do.
0·4		



CSL

MISCELLANEOUS SOUTH-INDIAN COINS.

7791			
52.5	Shiva and Párbutti.	ζ	on a granulated field.
0.45			
10982			
52.7	do. Sun and moon over	do.	} From Vandawash. Bednúr in Thurs- ton, p. 19, fig. 5.
0.46	them.		
10983			
53.0	do. do.	do.	
0.45			
10995			
52.5	do.	do.	(Called <i>Jansart.</i>)
0.4			
10999			
52.0	Image, with dots on either side.	do.	
0.45			
7200			
53.0	Three figures standing. Convex.	Granulated surface, convex.	
0.45			
7795			
52.4	do. do.	do.	do.
0.47			
10977			
53.0	do.	do.	do.
0.5			
10978			
53.0	do.	do.	do.
0.5	} Said to be of Porto Novo.		
10979		do.	do.
53.0		do.	do.
0.5			
10980			
53.0	do.	do.	do.
0.45			
10981			
52.7	do. (Niad Prethadhun,	do.	Fine grains, convex.
0.48	Chandranagar.)		
× 43			



10992 53·0 0·52 ×·48	Three-figures standing, (Called <i>Dhur muddy.</i>)	Granulated surface, fine grains, convex.
10984 51·5 0·42	Female figure, on either side of head, a crescent and five dots ∴.	do. do. do.
10985 52·5 0·48 ×·4	do. (10984 and 5 are called <i>Cadatalla.</i>)	do. do.
10990 52·5 0·45 ×·4	do.	do. do.
10991 51·5 0·4	do. (10990 and 1 are called <i>Pallybutty.</i>)	do. do.
11014 52·5 0·42	Figure, standing, with flowing robes and wreath.	do. do.
11015 53·0 0·45	do.	do. do.
11016 53·0 0·45	Standing female figure, holding indefinite object in each hand.	do. do.
11018 53·0 0·46	do.	do. do.
7794 52·6 0·45	Unrecognizable, flat image of a god.	do. do.
11019 52·0 0·36	A series of bulbs.	Deleted Sanskrit legend, probably of <i>Krishnaráyá.</i>



11022	51.5 0.43	A series of bulbs.	Deleted Sanskrit legend, probably of Krishṇarāya.
11023	51.0 0.4	do.	do.
11017	53.0 0.55	Standing male figure, in the middle, with each arm resting on a female figure at his side.	Slightly convex surface, with five dots and ☪
11020	53.0 0.49	do.	do.
11021	53.0 0.45	do.	do.
11038	51.0 0.45	Seated figure, almost defaced.	Raised surface, on plane surface.
11043	51.5 0.46	do.	do. Signs of letters on plane surface.
11029	51.5 0.45	do. do.	Oval convex surface, on plane surface.
11028	51.0 0.46	do.	Plain plane surface.
11040	52.0 0.4	Raised convex surface, on plane sur- face.	Raised convex surface, on plane surface.
11042	50.0 0.45	do.	do.
11024	53.0 0.42	do.	do.



11025 52·0 0·4	Raised convex surface ; on plane surface.	Raised convex surface, on plane surface.
11026 52·0 0·47 x·4	do.	do.
11027 53·0 0·45	do.	do.
11034 53·0 0·43	do.	Dotted convex surface.
11031 53·0 0·4	Two seated figures almost defaced.	Dotted surface with a bird to l.
11033 53·0 0·4	do.	Nothing definite.
11013 6·0 0·3	One seated figure.	One part of one line of legend legible : apparently not in Sanskrit.
11044 5·0 0·22	A trisūl. (Called a <i>Sharkhant</i> .)	A knot.
11039 26·0 0·3	Indefinite figure.	Inscription in two lines, illegible.
10986 106·5 0·85	In circle, with raised rim, a seated figure of Buddha.	In circle of dots, a five-rayed star : raised rim, oblique milled.
10987 106·5 0·85	do. In weight 10986 and 7 are double hunns.	do.
7339 51·8 0·45	A lingayat hun, bad gold.	

7340		
27.0	Half a lingayat hun, bad gold.	
0.35		
8206		
51.7	Marked with an ankus.	Marked with an ankus.
0.32		
9040		
52.0	No mark.	No mark.
0.37		
9041		
52.5	Fat female figure.	Indefinite.
0.5		
10906		
42.5	دا لو	(ضرب) ب مار پری (?) رس ?
0.49	Something like the top a caduceus: nothing intelligible. Perhaps a quarter mohur and not a hun.	Unintelligible.

TRAVANCORE AND OTHER COINS.

11055		
G.	In a circle of dots, a crescent with	In a circle of dots, a figure perhaps of
6.0	twelve dots in three rows above it.	a god.
0.275	Below ۰۶۱۰۱	
7141		
G.	do.	do.
5.8		
0.3		
11056		
G.	do.	do.
6.0		
0.3		
11057		
G.	do.	do.
6.0		
0.3		
11058		
G.	do.	do.
6.0		
0.34		



7798		
G.	A dagger.	Dots and curved lines.
5·8		
0·38		
7799		
G.	Some strokes.	Perhaps an image.
5·0		
0·25		
7800		
G.	Dots arranged like a flag.	Dots and curved lines.
6·1		
0·35		
13465		
G.	do.	Dots and lines, making rude image.
6·0	(The above coins are all fanams of Travancore.)	
0·32		
10496		
G.	Between two branches, in Malayalam	Between two branches, a shell.
79·0	characters:—"Śrī Padma Nābha"	
0·76	="The god with the lotus on his	
	navel," i. e., Vishnu. Edge milled.	
10497		
G.	Half of 10496, similar devices.	
39·5		
0·62		
10498		
G.	Quarter of 10496, do.	
19·5		
0·5		
10975		
G.	In a circle of long dots, a Maltese	Arms of Portugal.
75·0	cross. In the quarters of the circle,	
0·8	12 X, 1785.	
10976		
G.	do. but year 1785.	do.
75·0	(These two coins are said to be of St. Thome S. India.)	
0·73		



MISCELLANEOUS SOUTH-INDIAN COINS.

CSL

10805	S.	Within arabesque, R. V.	Within wreath, dots and curved lines, perhaps intended for a god.
23.5			
0.58			
10806	S.	do.	do.
23.5			
0.58			
10807	S.	do.	do.
23.5			
0.5			
10808	S.	do.	do.
24.0			
0.6			
10809	S.	do.	do.
24.0			
0.6			
10810	S.	do.	do.
24.0			
0.6			
10811	S.	do.	do.
23.7			
0.58			
11993	S.	do.	do.
23.3			
0.6			
11994	S.	do.	do.
23.2			
0.59			
9287	S.	do.	do.
23.5			
0.6			

9288	S.	Within arabesque, R. V.	Within wreath, dots and curved lines, perhaps intended for a god.
23.3			
0.6		(The above eleven coins are of Rāma Varma of Travancore.)	
11990	S.	Three fleurs de lys.	Dots and lines forming a crown.
22.7		(This is a coin of Pondicherry.)	
0.43			
× .36			
oval			
11991	S.	Part of a standing image.	Two C.'s back to back interlacing each other.
28.1			
0.35			
× .3			
11992	S.	do.	do.
29.3		(These two coins are said to be coins of Charles II.)	
0.35			
7801	S.	An image standing.	An arc crossing a circle.
28.0			
0.4			
11987	S.	Parts of a standing image.	An arc.
14.6			
0.3			
× .25			
11995	S.	Two equilateral triangles interlacing form, a hexagon in which is a small pellet. Around all, a legend.	In a circle of dots, a shell.
11.5			
0.32			
11996	S.	do.	do.
11.5			
0.32			
11988	S.	Dots and lines.	Dots.
6.1			
0.25			



MISCELLANEOUS SOUTH-INDIAN COINS.

CSL

11989		
S.	☪	Dots and lines, forming rude image.
5.8		
0.25		
× 2		
oval		
11997		
S.	Dots and lines.	do.
6.0		
0.23		
11998		
S.	do.	do.
6.0		
0.22		
11999		
S.	As on 11995, without legend.	As on 11995.
3.0		
0.2		
12000		
S.	do.	do.
3.0		
0.2		
7802		
S.	A kind of trisūl.	An Arabic 3 with a pellet in the middle.
5.5		
0.28		
9283		
S.		
5.0		
0.25		
9284		
S.	Dots and marks, Travancore coins.	Dots and marks, Travancore coins.
5.0		
0.25		
9285		
S.		
5.0		
0.23		



TRAVANCORE AND OTHER COINS.

9286		
S.	Dots and marks, Travancore coin.	Dots and marks, Travancore coin.
5·5		
0·21		
12001		
S.	Pentagonal, concavo-convex, concave	Blank.
38·5	side, some illegible marks.	
0·5		
12002		
S.	Marks look like a wheel.	do.
39·5		
0·5		
square		
12003		
S.	do.	do.
37·5		
0·48		
square		
12004		
S.	Similar to 12001.	
38·5	(These four coins are called <i>Dumries</i> .)	
0·55		
×·5		
oval		
12188		
C.	In a circle, a shell, round which in	In a rayed and ornamented circle, two
80·0	Malayálam <i>Ara-chakram</i> = Half a	equilateral triangles cutting each
0·67	Chakram.	other. Dot in centre. Outside this
		a circle, with a circle of dots out-
		side it.
12189		
C.	do.	do.
80·2		
0·65		
12190		
C.	In a circle of dots, an image stand-	Similar to 12188.
40·1	ing on the Malayálam figure for 4.	
0·6	The 4 means "4 Kásu" or Cash.	



CSL

MISCELLANEOUS SOUTH-INDIAN COINS.

12191		
C.	In a circle of dots, an image standing	Similar to 12188.
40.1	on the Malayálam figure for 4.	
0.55	The 4 means "4 Kásu" or Cash.	
12178		
C.	In dotted circle, a seated image	In a circle in Telugu—Kanarese cha-
36.5	facing; another image on each	acters "Vijaya-Victory."
0.45	side of it. A coin of Pudukota,	
	south of Trichinopoly.	
12179		
C.	do.	do.
37.0		
0.42		
12192		
C.	Image standing on the Malayálam	As on 12190.
19.6	figure for 2. (2 Kásu or Cash.)	
0.4		
12193		
C.	Image standing.	do.
10.0		
0.3		
12194		
C.	do.	do.
9.8		
0.3		
13404		
C.	Elephant, over which fzfz!	بهرام
82.0	This is a coin of Tippú Sultán.	ضرب بتم
0.75		

UNASSIGNED COINS.

7802		
G.	Concavo-convex.	Blank.
58.5		
0.65		
	On concave side, an 8-leaved flower	
	stamped in. On margins a shell	
	and two ornaments. Opposite the	
	shell:—बीराम.	



UNASSIGNED COINS.

CSL
143**7303**

G. Poor duplicate of 7302.

58.5

0.62

x 55

7785

G. Good duplicate of 7302.

58.0

0.6

13464

G. do.

58.0

0.66

These coins are called *Padma Tankas*.



APPENDIX I.

NAMES OF MINTS ON COINS.

Mint.	Coin Nos.	Page.
Bután.	13468-71	117
Jayantipur.	11855, 11854, 7759	117
Jummún. دارالامان	8914 & 8683	121
Náhan.	12660, 8845, 8846	119
Nepál.	12211, 8586, 12197-9	109
Srinagar (Kashmír).	11760, 11602	121



APPENDIX II.

NAMES OF RULERS ON COINS.

King.	Country or Dynasty.	Coin Nos.	Page.
Achyutaráyá.	Vijayanagar	7790	131
Agni Mitra.	Mitra	10018, &c.	12, 13
Amughabhūta.	Kuninda	12698, &c.	9
Ananta.	Kashmír	13780, &c.	80
Apúrva.	Kángṛa	8628, &c.	88
Atri Mitra.	Mitra	8377	13
Avatára.	Kángṛa	8635, &c.	90
Bahádur Sháh, Mulzim of Gírván Yudh.	Gurkha	12660	119
Bala Bhuti.	—	8409, &c.	31, 32
Bharatha.	Assám	11857, 7724	115
Bhartridáman.	Western Kshatrap	7827, 7831, 9988	60
Bhaskara Malla.	Nepál	7734	104
Bhíma Gupta.	Kashmír	13176	79
Bhúmi Mitra.	Mitra	8388	13
Bíranar Símba Malla.	Nepál	7743	106
Bírmahindra Malla.	"	7735	104
Brajnátha Símba.	Assám	11863, 7726	116
Chakravatendra Malla.	Nepál	7733	104
Chandra.	Allied to Guptas	13356	65
Chandra Gupta II.	Gupta	11041, 10501 & 2	62
Chandrakánta.	Assám	11852	115
Charhat Símba.	Chamba	8685	122
Chhadanivasa.	—	8359	34
Dharma.	Kángṛa	12475	91
Dhanadavada.	—	10019	47
Dhruva Mitra.	Mitra	12368	13
Didda Ráni.	Kashmír	13177, &c.	79, 80
Dikshema Gupta.	"	13399, &c.	78, 79
Gangeya Deva.	Chedí	9217, &c.	98, 99
Gaurínátha.	Assám	7721, &c.	113-115
Gírván Yudh.	Nepál	7753 & 4	107
"	"	12660	110
Gobínd Chandra.	Kanauj	7777	97, 98
Gobínd Charaṇa Prajama.	—	8484	100
"	—	12566 & 7	125



APPENDIX II.

King.	Country or Dynasty.	Coin Nos.	Page.
Gopála.	Kashmír	8758	78
Gulab Simha.	Bután	13469-71	117
Hagamasha.	Northern Kshatrap	8419	29-31
Hari.	Kángra	8636, &c.	90
Hari.	"	12492	90
Harihara.	Vijayanagar	11011 & 2	129
Harsha.	Kashmír	8761, &c.	81
Indra Mitra.	Mitra	12369, &c.	12
Jága Deva.	Kashmír	8764, &c.	81
Jagajjaya Malla.	Nepál	7737	105
Jayandra Malla.	"	7742	105
Jaya Simha.	Kashmír	8763	81
Kacha.	Gupta	7704	62
Kalasa.	Kashmír	7774, &c.	80
Kamaleśvara Simha.	Assám	7725	115
Khvadavayaka.	Kábul	13365	87
Kirtti Varmma.	Chandel	8483	99
Krishnaraya.	Vijayanagar	10997, &c.	128, 129
Kumára Gupta.	Gupta	7833, &c.	63, 64
"	"	7705	62
Kumára Pála.	—	7779	100
Lakshmi Nara Sin.	Nepál	7727	103
Lakshmi Simha.	Assám	7719, &c.	112, 113
Lokaprakása Malla.	Nepál	7746	106
Mahipatendra Malla.	"	7731	104
Mahindra Simha.	"	7736	105
Maraputra ?	—	12327	34
Megha.	Kángra	8777	89
Mihirakula.	Kashmír	13168 & 89, 12584	73
Muhammad Sháh.	Bután	13468	117
Nandi Gupta.	Kashmír	8856	79
Nára Gupta.	Gupta	7183, 7706	63
Narendra.	Kángra	8772	90
Narendra Malla.	Nepál	7729	104
Nivása Malla.	"	7739	105
Nripendra Malla.	"	7747	106
Paramárdi.	—	8490	99
Pártha.	Kashmír	7768, &c.	77
Pithama.	Kángra	8625, &c.	88
Phuleśvari, queen of Siva Simha.	Assám	7712	110
Pramatha Simha.	"	7715 & 6, 7322	111
Pramathesvari	"	7713	110
Pratápa.	Kashmír	9962, &c.	75, 76

APPENDIX II.

King.	Country or Dynasty.	Coin Nos.	Page.
Pratāpa Malla.	Nepāl	7728	103
"	"	7732	104
Pratāpa Simha.	"	7750	107
Priti Chandra.	—	9989	68
Prithvī Nārāyaṇa.	Nepāl	7749	106
Puganaputtra P	—	8925	33
Rāja Janapada.	—	8750, &c.	33
Rāja Rājendra.	Nepāl	7751	107
Rājendra Vikrama.	"	7755, &c.	107
Rājesvara Simha.	"	7717, &c.	111, 112
Rāma.	Kāngra	8639	91
Rāma Datta.	—	8456, &c.	31
Rāma Rāja.	Vijayanagar	7793, &c.	131
Rāmganga and Tāra.	Tipperah	7757	116
Rāṇa Bahādur.	Nepāl	7752	107
Ranjit Deo.	Jammún	8914	121
Ranjit Malla.	Nepāl	7730	104
Rudra Simha.	Western Kshatrap	7828-30	61
"	"	12486	60
Rudra Simha.	Assám	7711 & 11831	110
Rúpa.	Kāngra	8632, &c.	89
Samanta Deva.	Kábul	7522, &c.	82-85
Samudra Gupta.	Gupta	7703, &c.	61
"	"	10503	62
Sangráma.	Kashmír	8759, &c.	78
Sankara.	"	7767	77
Sarveśwarī, queen of Siva Simha.	Assám	7714	110
Sashana.	—	13353	66
Siddhi Nara Malla.	Nepāl	7738	105
Singāra.	Kāngra	8634, &c.	89
Skanda Gupta.	Gupta	8887	64
Sugandhī Rání.	Kashmír	7769, &c.	77
Surendra Vikrama.	Nepāl	11045-47	108
"	"	11049, &c.	108, 109
Syalapati Deva.	Kábul	7805, &c.	85-87
Toramāna.	Kashmír	12587, &c.	76, 77
"	"	8491	73, 74
Tribhuvana Gupta.	"	13401	79
Triloka.	Kāngra	8638, &c.	91
Triloka Varmma.	Chandel	8487 & 88	99
Unmatti.	Kashmír	7444	78
Vanka Deva.	Kábul	7803, &c.	87
Venkaṭa.	Vijayanagar	10996, &c.	130, 131



APPENDIX II.

King.	Country or Dynasty.	Coin Nos.	Page.
Vijaya Mitra.	Mitra	10017, 12371	13
Vijaya Sena.	_____	8271	60
Vinayāditya (Jayapīṭa).	Kashmīr	7764	75
Vīradāman.	Western Kshatrap	8272	59
Vīra Sena.	_____	8399, &c.	32, 33
Vīra Varmma.	Chandel	8486	99
Vishṇu Malla.	Nepāl	7745	106
Viśva Siṃha.	Western Kshatrap	7825, &c.	60
Yaśodāman.	Western Kshatrap	12485	61
Yoganarendra Malla.	Nepāl	7740 & 41	105
Yogaparakīśa Malla.	”	7744	106

EXPLANATIONS OF PLATES I—IV.

Page of Catalogue.	Number of Coin.	DESCRIPTION OF COIN.
COINS OF ANCIENT INDIA.		
PLATE I.		
MONOGRAMS OR MARKS ON ANCIENT COINS OF INDIA.		
—		
PLATE II.		
3	7532	Silver Punch-marked Coin.
5	7542	do. do.
5	7544	do. do.
6	10014	do. do.
7	10015	Copper do.
7	12374	Silver do.
8	12378	Copper do.
9	12379	do. do.
15	12383	do. Malava Coin.
15	12389	do. do.
16	12397	do. do.
16	12398	do. do.
17	12400	do. do.
18	12408	do. do.
19	12415	do. do.
21	12428	do. do.
22	12434	do. do.
22	12435	do. do.
23	12437	do. do.
23	12438	do. do.
23	12441	do. do.
24	12447	do. do.
24	12449	do. do.
25	12452	do. do.
25	12455	do. do.
25	12459	do. do.
33	8925	do. Coin with inscription.
34	8359	do. do.
34	12377	do. do.
35	8446	do. do.
—		
PLATE III.		
35	8455	Copper Coin with inscription.
37	8432	do. do. do. do.
40	8318	do. do. do. Chaitya and Elephant.
44	12732	do. do. do. do. and Horse or Deer.



EXPLANATIONS OF PLATES I—IV.

CSL

Page of Catalogue.	Number of Coin.	DESCRIPTION OF COIN.
47	10019	Copper Coin.
51	12372	do. do.
65	13356	Gold do. allied to Gupta Coins.
66	13353	Brass do. do.

MEDIÆVAL COINS OF INDIA.

78	7444	Copper Coin of Unmatti.
100	7779	Gold do. Undetermined.

MISCELLANEOUS NORTH-INDIAN COINS.

109	7710	Silver Asāmeśe Coin.
110	7712	do. do. of Phuleśvarī, wife of Siva Śimha.
110	7714	do. do. do. Sarveśvarī, do.
111	7716	do. do. do. Pramatha Śimha.
111	7718	do. do. do. Rājeśvara Śimha.
112	7719	Gold do. do. Lakshmi Śimha.
112	11834	Silver do. do. Rājeśvara Śimha.
112	11835	do. do. do. Lakshmi Śimha.

PLATE IV.

113	7722	Gold Asāmeśe Coin of Gaurinātha.
113	11841	Silver do. do. Lakshmi Śimha.
114	11846	do. do. do. Gaurinātha.
114	11848	do. do. do. do.
115	7725	do. do. do. Kamaleśvara Śimha.
115	11851	do. do. do. Gaurinātha.
115	11852	do. do. do. Chandrakānta.
116	11853	do. do. do. Brajnātha Śimha.
117	13468	do. Coin of Butān.
117	13469	do. do. do. do.
119	8845	Copper do. do. Nāhan.
119	12660	do. do. do. do.
122	8685	do. do. do. Chamba.

MISCELLANEOUS SOUTH-INDIAN COIN.

142	7302	Gold unassigned Coin.
-----	------	-----------------------



20499

1	४	५	६	७	८	९	१०
११	१२	१३	१४	१५	१६	१७	१८
१९	२०	२१	२२	२३	२४	२५	२६
२७	२८	२९	३०	३१	३२	३३	३४

Monograms or Marks on Ancient Coins of India.



P3
R
N° 7532



P5
R
N° 7542



P6
R
N° 7544



P8
R
N° 10014



P7
R
N° 12374



P7
R
N° 10015



P8
R
N° 12378



P9
R
N° 12379



P15
R
N° 12388



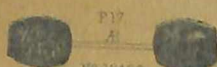
P16
R
N° 12389



P16
R
N° 12397



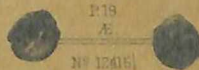
P16
R
N° 12399



P17
R
N° 12400



P18
R
N° 12408



P19
R
N° 12405



P21
R
N° 12428



P22
R
N° 12434



P23
R
N° 12435



P23
R
N° 12437



P25
R
N° 12438



P25
R
N° 12441



P26
R
N° 12447



P26
R
N° 12449



P26
R
N° 12452



P26
R
N° 12455



P26
R
N° 12459



P26
R
N° 8819



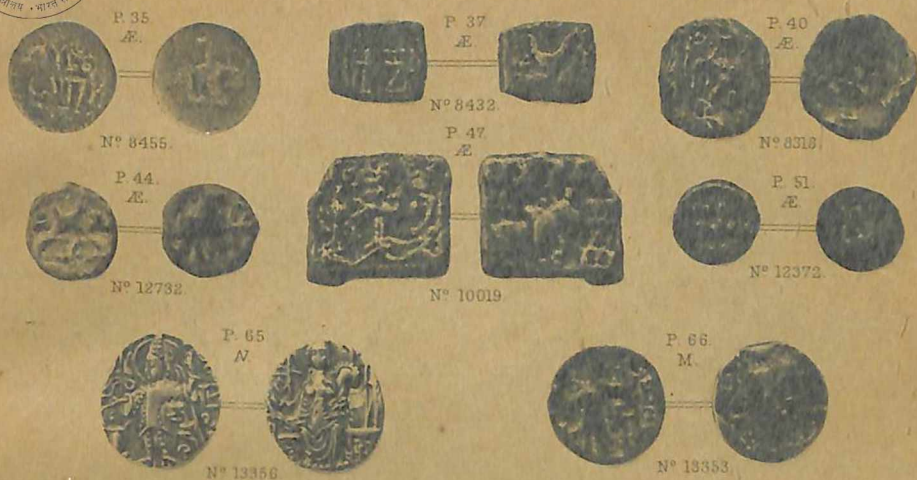
P34
R
N° 12377



P32
R
N° 9585



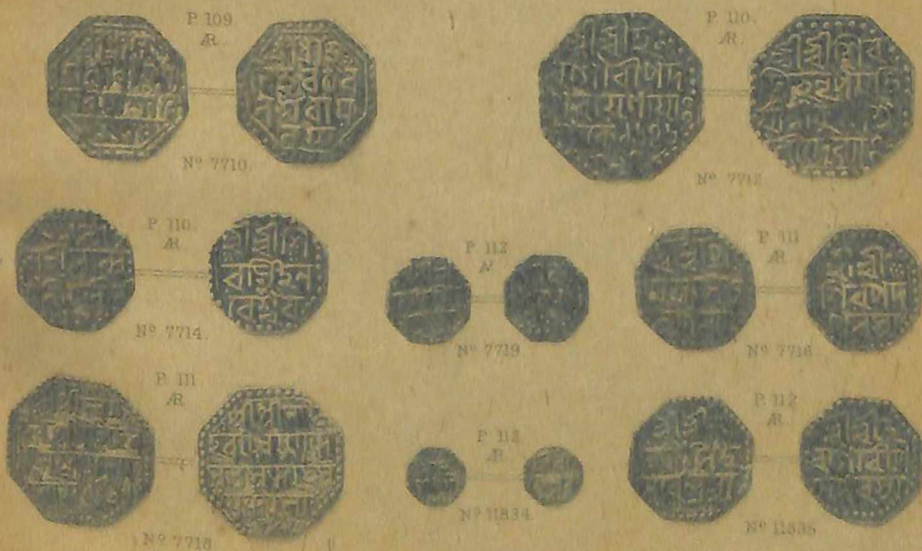
P36
R
N° 9446



COINS OF ANCIENT INDIA.



MEDIAEVAL COINS OF INDIA



MISCELLANEOUS NORTH INDIAN COINS



MISCELLANEOUS NORTH INDIAN COINS



MISCELLANEOUS SOUTH INDIAN COIN