





# Ideal Homes

(TENTH EDITION)

SECTION ONE  
(32 Pages)

**Bungalows**

COMPLETE WITH FLOOR PLANS

Price \$1.00 per copy

SECTION TWO  
(32 Pages)

**Two Story Houses**

Including Semi-Bungalows

COMPLETE WITH FLOOR PLANS

Price \$1.00 per copy

For Price List of Plans, Review of  
Plans, Check of Construction of  
Exterior Material, etc., See Pages.

**Plan Service Company**

224 SOUTH LEXINGTON, ST. PAUL, MINN.  
P. O. BOX 3286      PHONE ELKHURST 2425

# Foreword

THE HOMES illustrated in this book are from actual photographs, which combine beauty, convenience and economy and bring to you the very latest in style, and design of practical up-to-the-minute architecture. Your home is the reflection of your personality and the expression of your ideas, and with this thought in mind, it is hoped that the suggestions carried out in the interior and exterior planning of the homes shown herein will assist you in selecting a design conforming to your individual taste and requirements.

The proper selection of shrubbery adds wonderfully to the artistic appearance of any home, and in these illustrations we have endeavored to show how the placing of flowers, shrubbery, well located trees, a vine on a trellis—little touches that the home owner can do himself to make a charming spot, though the house itself be small, even plain.

In the preparation of this book, great care has been exercised in selecting these types of homes that are in great demand and that can be constructed simply and economically by any competent carpenter or contractor. The interiors have been carefully and thoughtfully planned and excellent results have been accomplished in the number and size of rooms provided, considering the outside dimensions.

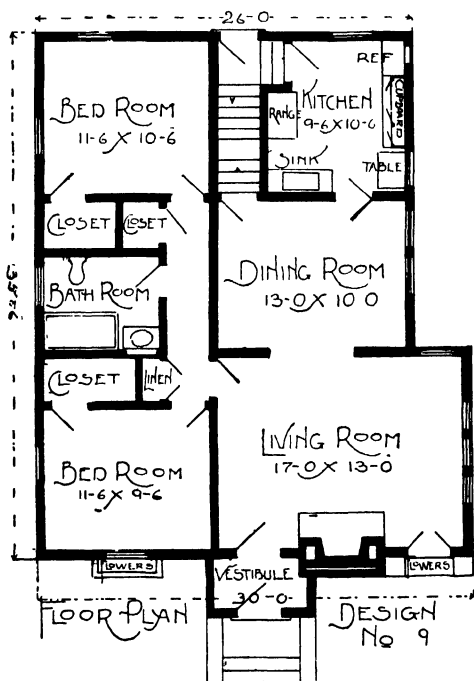
## *Alternative Floor Plans*

To further assist you in the selection of a plan best suited to your requirements, both as to size and room arrangement, we have in most instances shown two or more floor plans for each house design illustrated. After selecting a suitable design, as to the exterior appearance, you should then decide definitely on the number of rooms required. To determine proper size of the various rooms, it would be advisable to measure the rooms in your present home and then compare with measurements shown on plan. If you desire to increase the size of a certain room by diminishing the size of another, it is a very simple matter for the carpenter or contractor to change location of partition walls. This same suggestion applies to location of windows and doors.

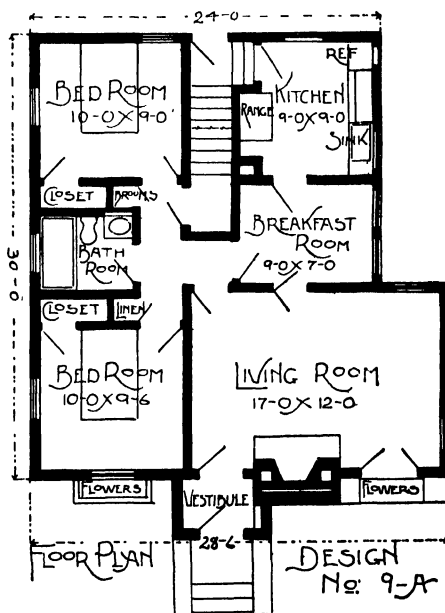
In planning the interiors, we have endeavored to make the arrangement of rooms thoroughly practical and convenient from every standpoint and to utilize every inch of floor space. The homes are all planned in a most economical way so as to eliminate the use of any material not absolutely required and for this reason it is advisable to conform to the outside dimensions of plans shown.



Design No. 9



Plan No. 9—Size, 26 feet by 35 feet 6 inches

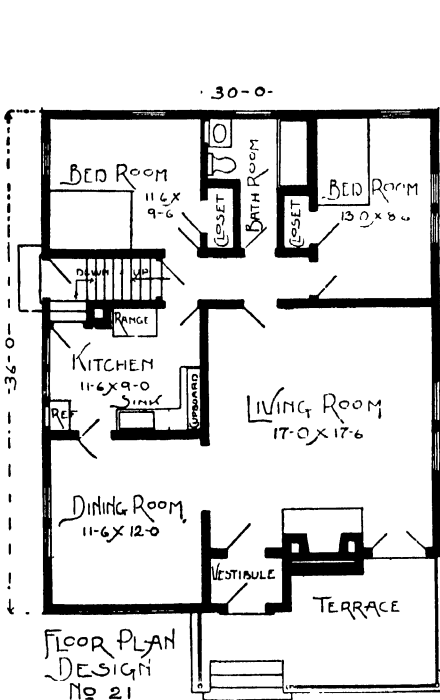


Plan No. 9A—Size, 24 by 30 feet.

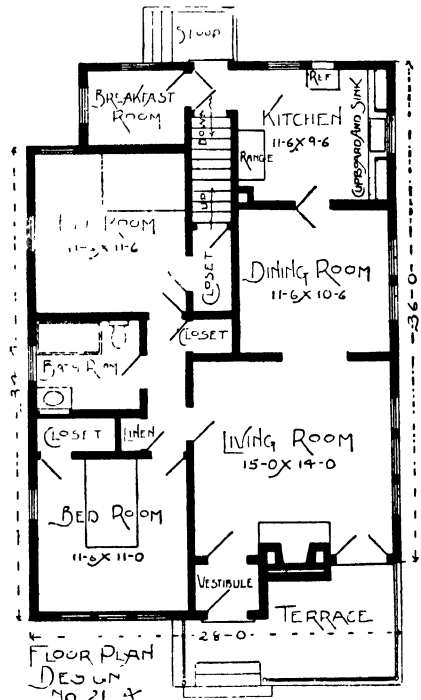
**T**HIS bungalow, the design of which borrows a trifle from the Spanish style, is planned in two sizes. The exterior, with the projected vestibule entrance, fireplace chimney and French doors opening from living room, makes this one of the most distinctive type, artistically designed bungalows. An 8-inch brick water table extends around house, with stucco above, and brick trim around window and door frames. The interior arrangements are conveniently planned, with every inch of space utilized, large living room, ample closet space, stairway to attic, and grade entry, leading to kitchen and to basement. Seven foot basement under entire house, fitted with laundry tubs, vegetable cellar and coal bin. Hot water or hot air may be used for heating. Ceiling height, 9 feet.



Design No. 21



Plan No. 21—Size, 30 by 36 feet.

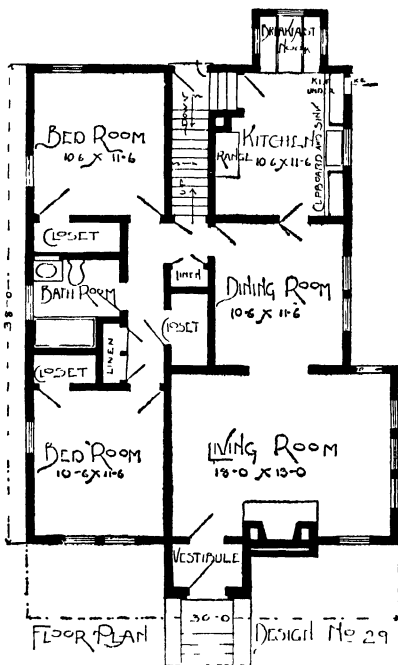


Plan No. 21A—Size, 28 by 36 feet.

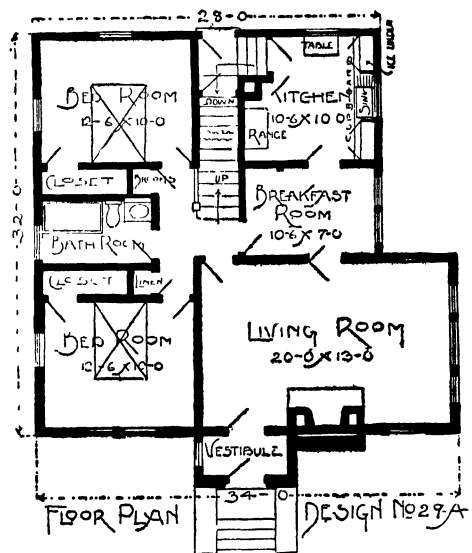
**C**ALIFORNIA style predominates in the design of this extremely attractive bungalow. Although expensive in appearance, the design and construction is very simple and the home can be built at a very nominal cost. Entrance is made through vestibule, into large and well lighted living room, with arch leading to dining room. The balance of rooms are good size, with very roomy closets. Provision is made for stairway to attic, and grade entry, leading to basement and to kitchen. An 8-inch brick water table extends around house, with stucco above, and rock face stone for front terrace walls. Seven foot basement under entire house, with cement floor, laundry tubs, vegetable cellar, and coal bin. Hot water or hot air may be used for heating. Ceiling height, 9 feet.



Design No. 29



Plan No. 29—Size, 26 by 28 feet.

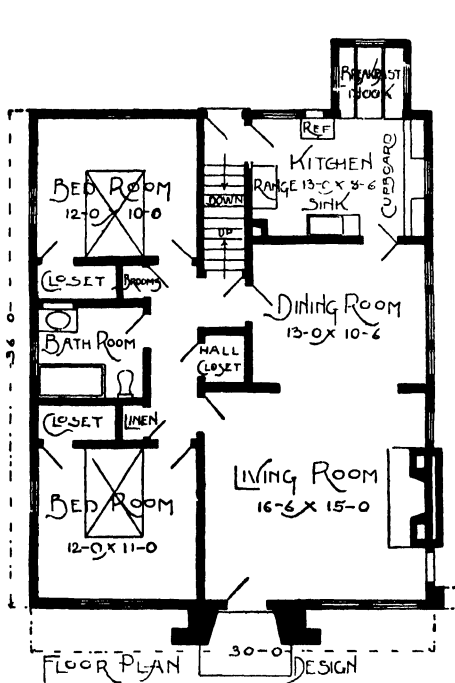


Plan No. 29A—Size, 28 by 32 feet.

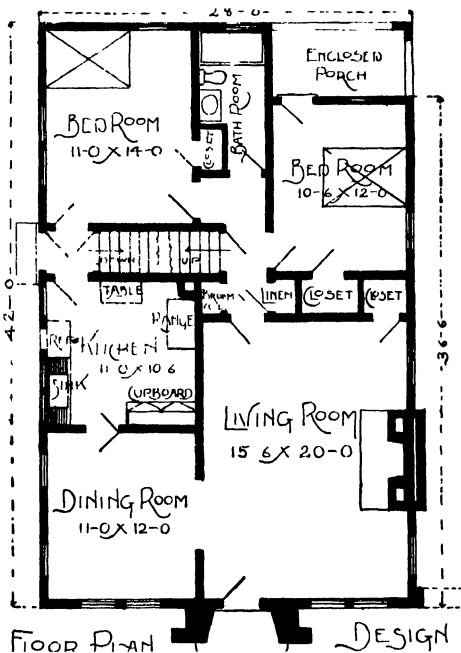
**T**HE projected vestibule entrance, front fireplace, and rock face stone trim around foundation walls and front door, contribute very generously in producing this delightful exterior. Entrance is made through vestibule into large well lighted living room. All other rooms in house are good size, with roomy closets. In each plan a stairway leads to second floor, which has sufficient height to accommodate two additional rooms. The kitchen has a cabinet for dishes, with sink in center and space for refrigerator at end, which is iced from the outside. Rear grade entry leads to kitchen and to basement. Seven foot basement under entire house, with laundry tubs, vegetable cellar, etc. Hot water or hot air for heat. Ceiling height, 9 feet.



Design No. 31



Plan No. 31—Size, 30 by 36 feet.

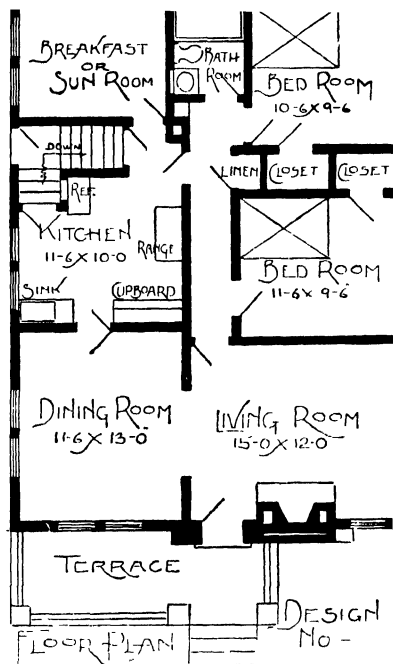


Plan No. 31A—Size, 28 by 42 feet.

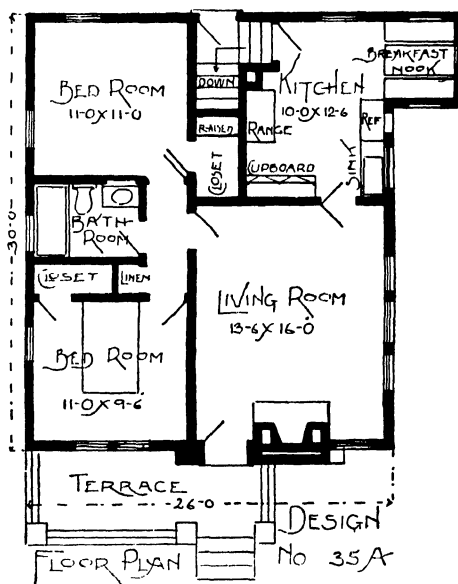
THE design of this attractive bungalow borrows from the Mission style of architecture. The projected entrance with recessed door, rock face stone trim around foundation walls, and arched entrance over walk leading to rear, combine in producing this artistic exterior. The interior planning is all that could be desired, with extra large well lighted living room, with arch leading to dining room, good size bed rooms and kitchen, roomy closets, stairway to attic, and rear grade entry, leading to basement and to kitchen. Seven foot basement under entire house, with cement floor, laundry tubs, vegetable cellar and dust-proof coal bin. Hot water or hot air may be used for heating. Ceiling height, 9 feet.



Design No. 35



Plan No. 35—Size, 28 by 36 feet.



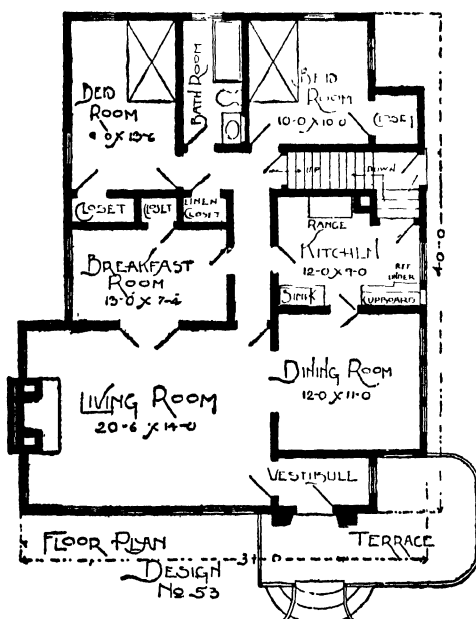
Plan No. 35A—Size, 26 by 30 feet.

**D**ECIDEDLY unusual in design, this bungalow, while extremely simple and economical to construct, has a very pleasing exterior, with the projected front fireplace and entrance, and brick terrace with wrought iron rail. The interior plan arrangements are ideal in every respect, large living room, good size bed rooms and kitchen, roomy closets, and grade entry, leading to basement and to kitchen. A 12-inch smooth troweled water table extends around house, with stucco above. Seven foot basement under entire house, with cement floor, laundry tubs, etc. Hot water or hot air may be used for heating. Ceiling height, 9 feet.

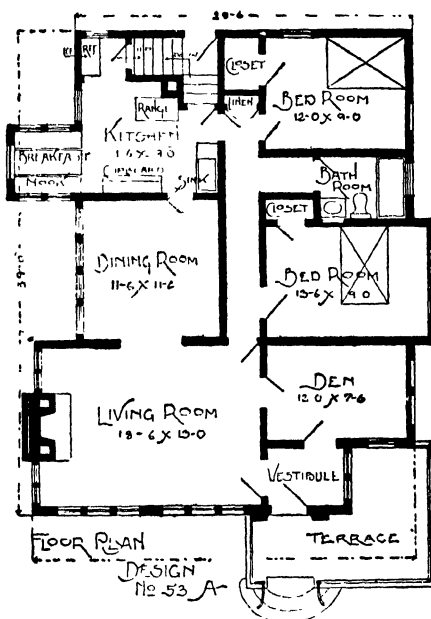




Design No. 53



Plan No. 53—Size, 34 by 40 feet.

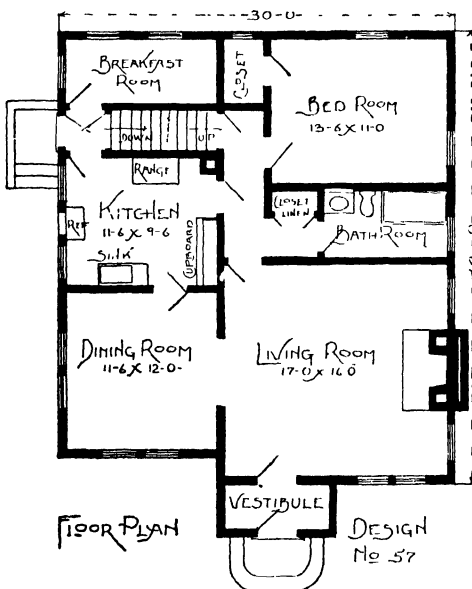


Plan No. 53A—Size, 32 by 39 feet.

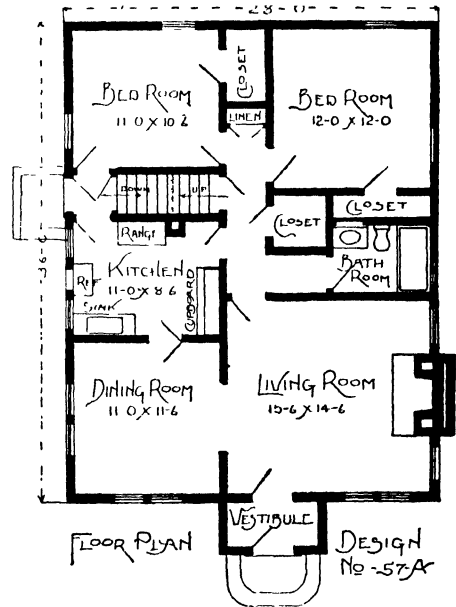
**T**HE peak of artistic designing is attained in this graceful, unique and thoroughly distinctive type exterior. The recessed Mission style entrance, front terrace with wrought iron railing, rock face stone trim, and attractive fireplace chimney, combine in producing this beautiful exterior effect. The interior arrangements are palatial, with exceptional large well lighted living room, with arch leading to dining room, and French doors leading to breakfast room or den. The balance of rooms are good size, with abundant closet space. The center hall in each plan connects practically every room in house. The kitchen has space for all necessary fixtures and has a door to grade entry, leading to basement and outdoors. Seven foot basement under entire house, with cement floor, laundry tubs, vegetable cellar and dust-proof coal bin. Hot water or hot air may be used for heating. Ceiling height, 9 feet.



Design No. 57



Plan No. 57—Size, 30 by 34 feet.

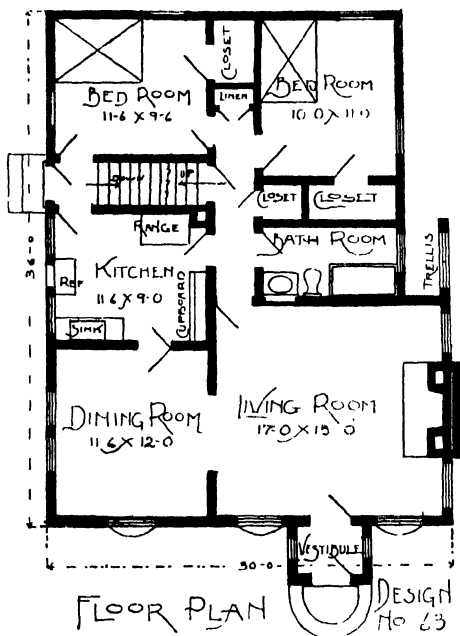


Plan No. 57A—Size, 28 by 36 feet.

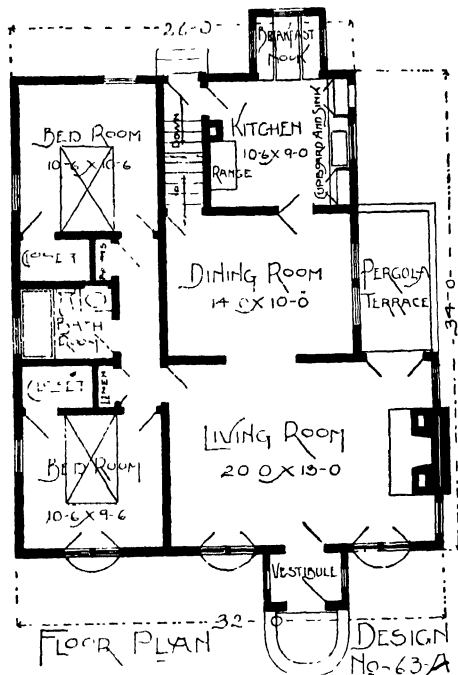
**T**HE triple gable effect, including projected vestibule entrance, with rock face stone around door frame, produces a very pleasing and homelike exterior. Entrance is made through vestibule to large well lighted living room, which has a fireplace, and arch leading to dining room. The balance of rooms are good size with roomy closets. The small center hall connects all rooms in house, except dining room, and has a stairway leading to second floor which has sufficient height to provide two additional rooms. A 12-inch smooth troweled water table extends around house, with stucco above. Seven foot basement under entire house, fitted with laundry tubs, vegetable cellar and coal bin.



Design No. 63



Plan No. 63—Size, 30 by 36 feet.

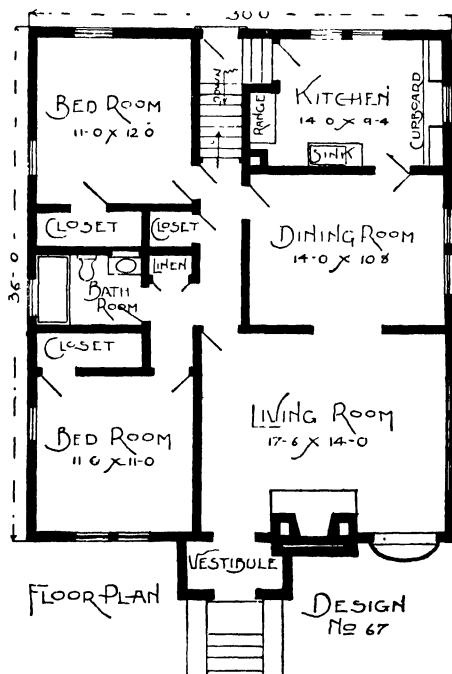


Plan No. 63A—Size, 32 by 34 feet.

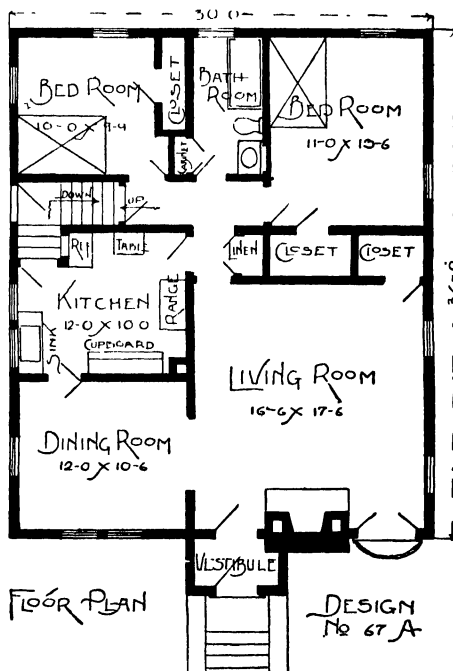
**T**HIS attractive bungalow, while expensive in appearance, has the plain lines and is very simple and economical to construct. The projected vestibule entrance, with rock face stone trim around door frame, also around foundation wall, wrought iron trim under front windows, and pergola terrace at rear of living room, combine in producing this beautiful exterior. The interior plan arrangements are complete in every respect, with large rooms, abundant closet space, small center hall, stairway to attic and grade entry, leading to basement and to kitchen. Seven foot basement under entire house, with cement floor, laundry tubs, etc. Hot water or hot air may be used for heating. Ceiling height, 9 feet.



Design No. 67



Plan No. 67—Size, 30 by 36 feet.

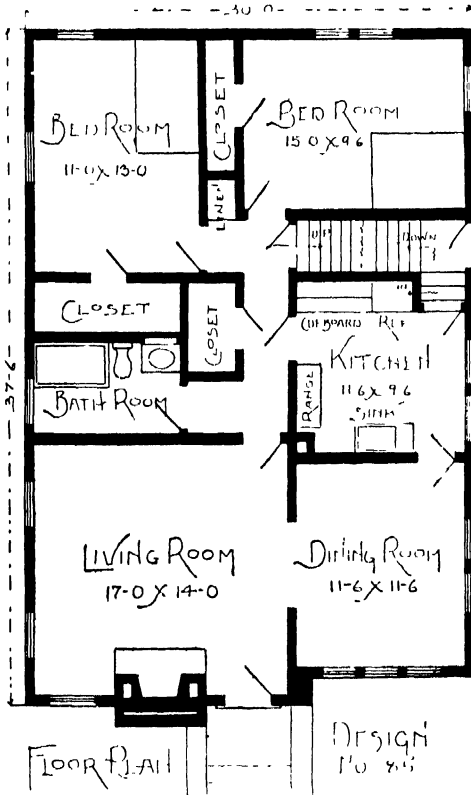


Plan No. 67A—Size, 30 by 36 feet.

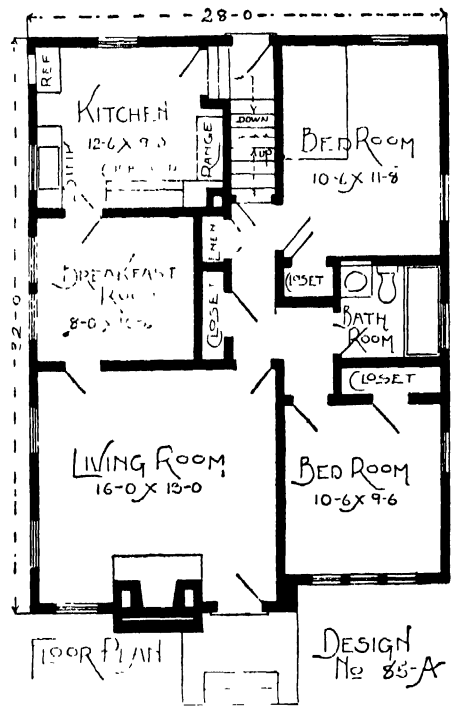
THE front gable effect, fireplace chimney, projected vestibule entrance, French doors opening from room, and rock face stone trim around foundation walls, combine in producing this beautiful exterior. The interior arrangements are all that could be desired, including vestibule, large well lighted living with arch leading to dining room, good size bed rooms with roomy closets, and stairway to second floor where two extra rooms can be provided. The kitchen is well equipped with all necessary fixtures and has a door to grade entry, leading to basement and outdoors. Seven foot basement under entire house, with cement floor, laundry tubs, etc. Hot water or hot air may be used for heating. Ceiling height, 9 feet.



## Design No. 85



Plan No. 85—Size, 30 by 37 feet 6 inches.

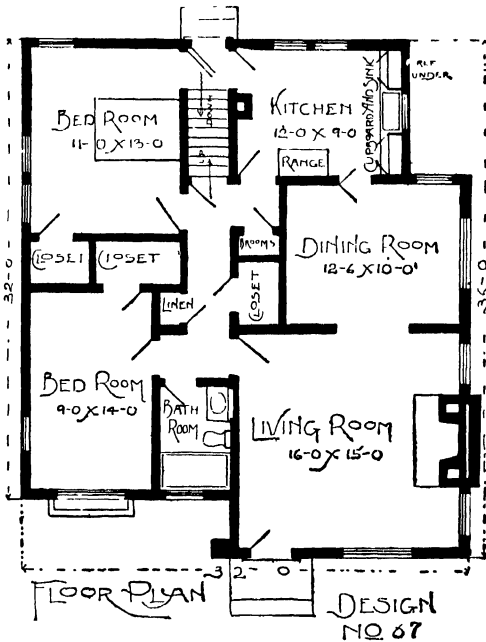


Plan No. 85A—Size, 28 by 32 feet.

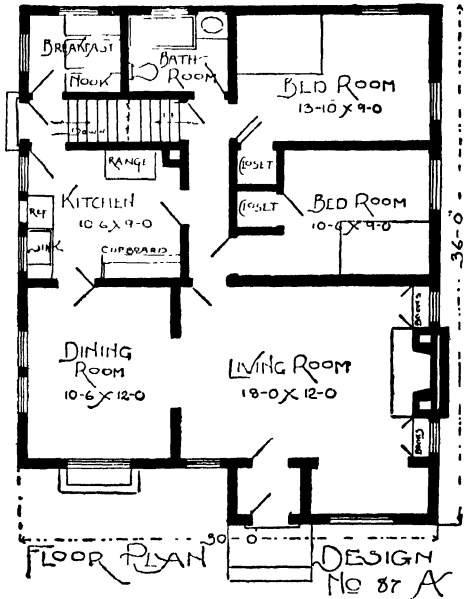
**T**HE gable over entrance, front fireplace chimney, with rock face stone and brick trim, brick stoop with wrought iron rail, have produced an exterior, rich in design and distinctive in appearance. An 8-inch brick water table extends around house, with stucco above. The interior plan arrangements provide large rooms, abundant closet space, stairway to attic, where two additional rooms can be provided, large kitchen with space for all required fixtures, and grade entry, leading to basement and kitchen. Seven foot basement under entire house with cement floor, laundry tubs, etc. Hot water or hot air heat. Ceiling height, 9 feet.



Design No. 87



Plan No. 87—Size, 32 by 36 feet.

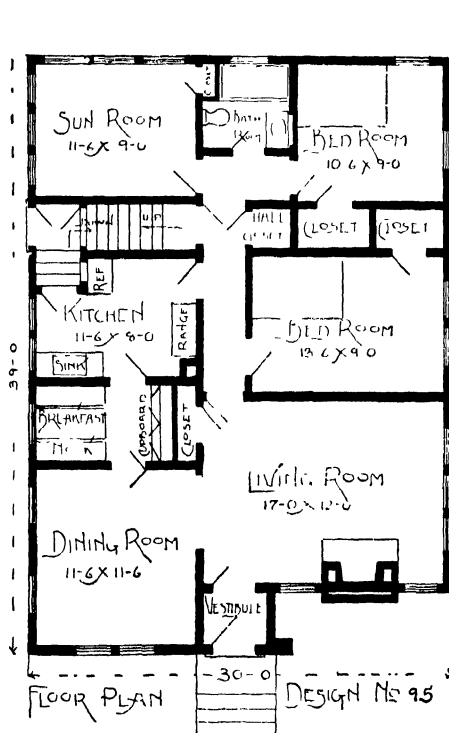


Plan No. 87A—Size, 30 by 36 feet.

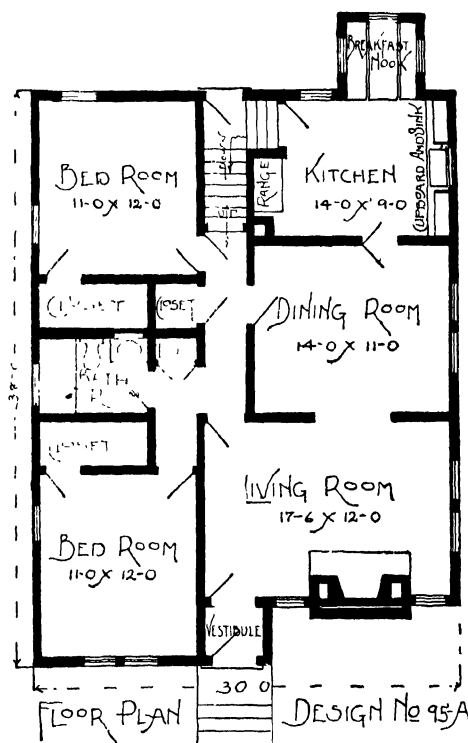
**T**HIS new style bungalow, which borrows in design from the Spanish, is a decided departure from the usual type, and although costly in appearance, the construction is very simple and economical. An 8-inch brick water table extends around house, with stucco above, and stained cedar shingles on the roof. The floor plan arrangements are very complete with no waste space. The small center hall connects all rooms except dining room, and has a stairway leading to attic. Seven foot basement under entire house. Hot water or hot air heat may be used. Ceiling height, 9 feet.



Design No. 95



Plan No. 95—Size, 30 by 39 feet.

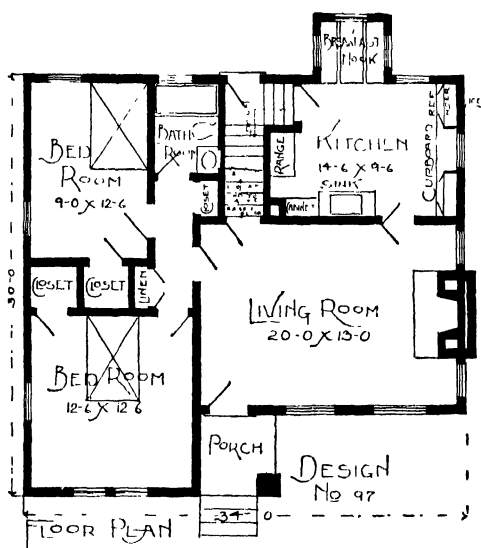


Plan No. 95A—Size, 30 by 38 feet.

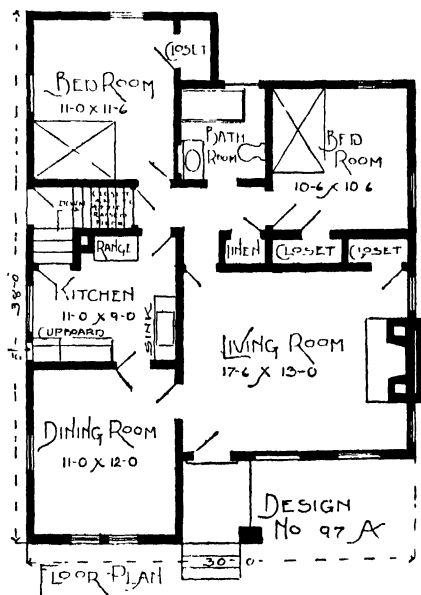
**T**HE exterior design of this bungalow has a rich appearance, decidedly different from the usual type. The rock face stone trim around front door frame and unique fireplace chimney, add considerably in producing this artistic exterior. Entrance is made through vestibule into large well lighted living room with arched opening to dining room. The balance of rooms are good size, with large roomy closets. Provision is made for stairway to attic; breakfast nook, and rear grade entry, leading to basement and kitchen. Seven foot basement under entire house. Hot water or hot air heat. Ceiling height, 9 feet.



Design No. 97



Plan No. 97—Size, 34 by 30 feet.



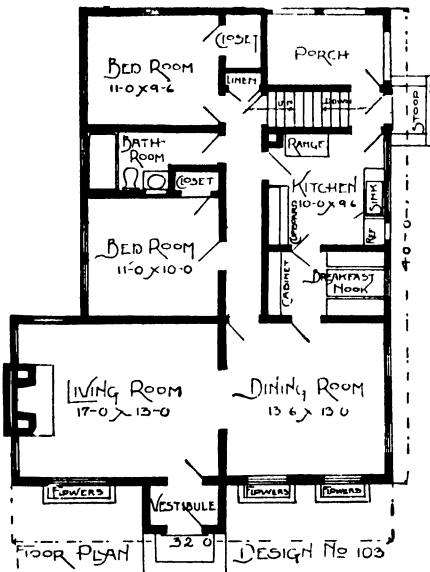
Plan No. 97A—Size, 30 by 38 feet.

..... design of this Mission type bungalow is a good demonstration of how attractive and well planned a small home may be. The interior arrangements have been well planned and conveniently arranged, with every inch of space utilized. The living room is very spacious and well lighted. All other rooms are good size, with good roomy closets. Provision is made for stairway to attic, and grade entry, leading to basement and kitchen. Seven foot basement under entire house, with laundry tubs, etc. Hot water or hot air for heating. Ceiling height, 9 feet.

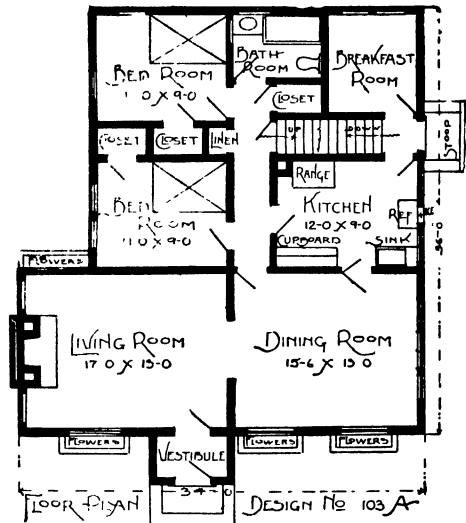




Design No. 103



Plan No. 103—Size, 32 by 40 feet.

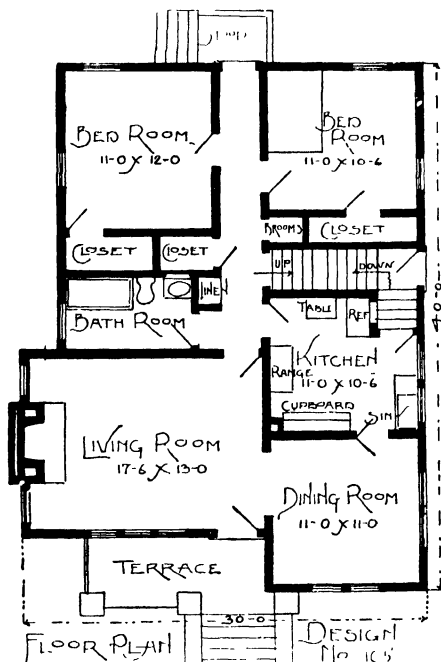


Plan No. 103A—Size, 34 by 36 feet.

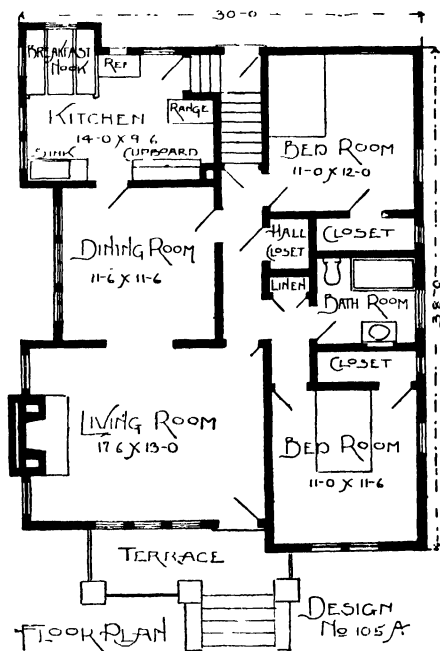
THIS new style bungalow is a type that will always be in demand. The projected vestibule entrance, with brick trim around door frame, brick stoop with wrought iron rail, and attractive window trim including flower boxes, produces an exterior exceptionally attractive in appearance and individual in design. The interior arrangements provide large well lighted rooms, good size closets, cozy breakfast nook, and low stoop entrance to basement and kitchen. Seven foot basement under entire house. Hot water or hot air for heating. Ceiling height, 9 feet.



Design No. 105



Plan No. 105—Size, 30 by 40 feet.

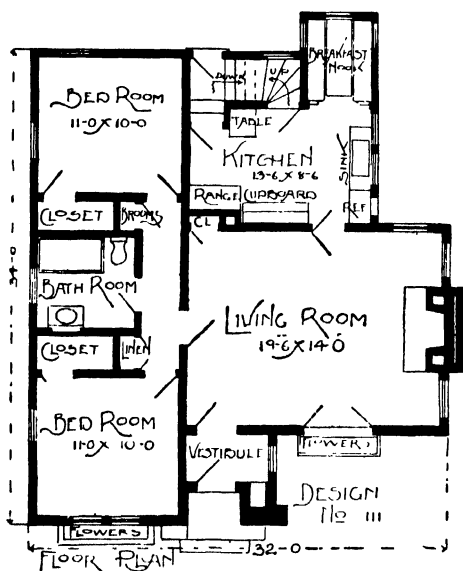


Plan No. 105A—Size, 30 by 38 feet

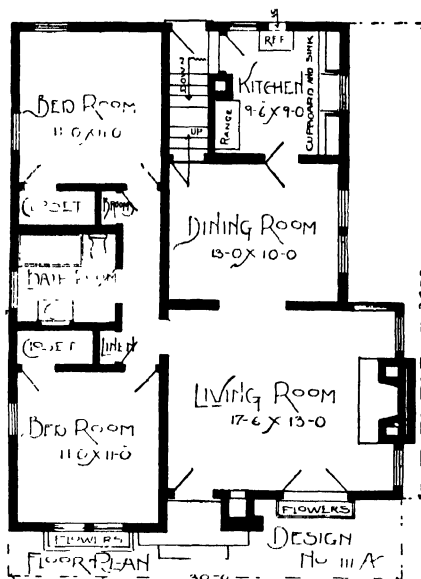
**T**HE design of this bungalow borrows from the English type, and is extremely rich in appearance. The second floor of this house, has sufficient height for two additional good size rooms, also toilet or extra bath room. The living room in each plan is very spacious and has an arch leading to dining room. All other rooms are very good size, with large closets. A smooth troweled water table extends around house, with stucco above, and stained cedar shingles on roof. The kitchen has space for all required fixtures and has a stairway to grade entry, leading to basement and outdoors. Seven foot basement under entire house. Hot water or hot air may be used for heating. Ceiling height, 9 feet.



Design No. 111



Plan No. 111—Size, 32 by 34 feet.

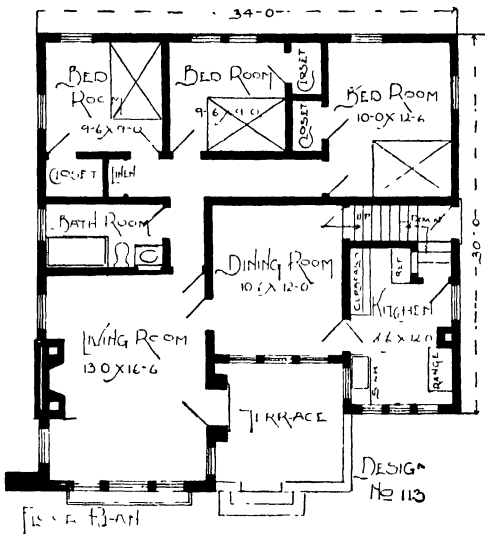


Plan No. 111A—Size, 30 by 34 feet.

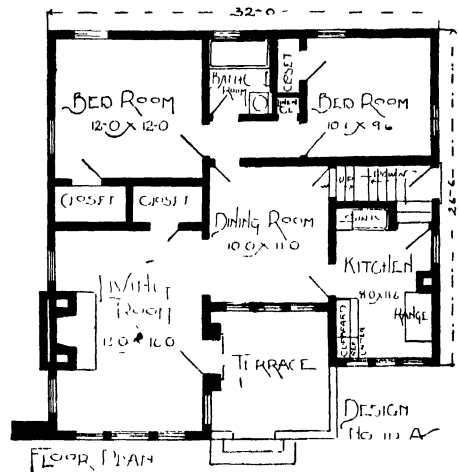
The recessed front entrance, French doors opening from living room, with attractive iron rail trim, and gable roof, makes this an unusually attractive design. There is nothing costly in the construction, except the few inexpensive touches, above referred to. A choice of interior arrangement is provided. In one plan the dining room has been omitted, with the addition of a breakfast nook. The rooms are all good size, with a very spacious and well lighted living room, good size closets and rear grade entry. Seven foot basement under entire house. Hot water or hot air for heating. Ceiling height, 9 feet.



Design No. 113

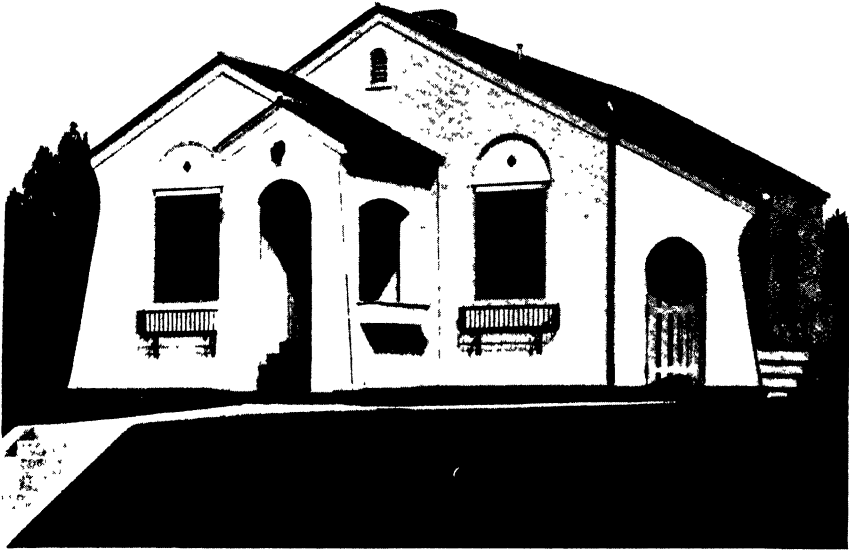


Plan No. 113—Size, 34 by 36 feet.

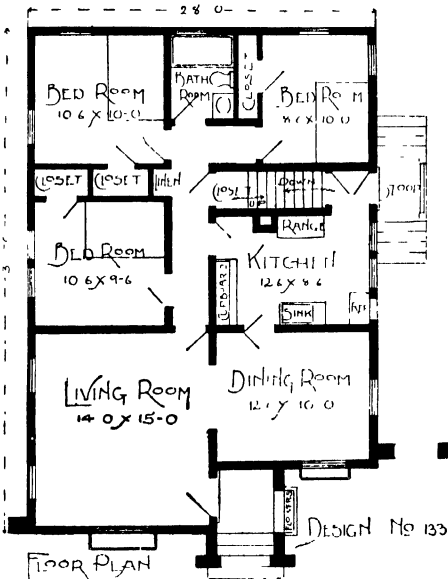


Plan No. 113A—Size, 32 by 32 feet.

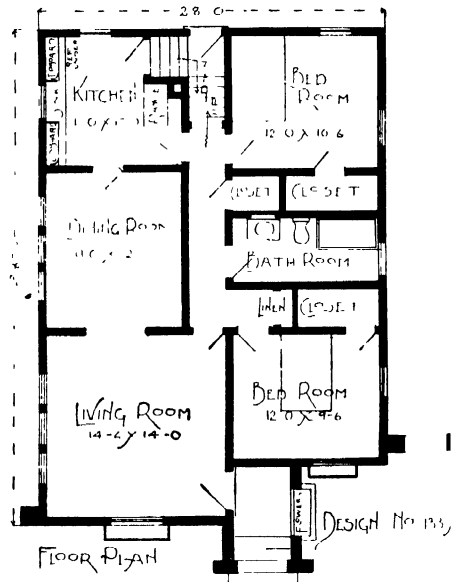
**T**HIS attractive bungalow, California type, is a very unusual design, extremely artistic and attractive in appearance, and reflects distinction. An 8-inch brick water table extends around house, with stucco above. The interior planning affords a choice in size and number of rooms, one plan arrangement having three bed rooms, while the other has two, with large roomy closets and connected to center hall and bath room. Stairway to attic is provided, also grade entry, leading to kitchen and basement. Seven foot basement under entire house, with cement floor, laundry tubs, vegetable cellar and coal bin. Hot water or hot air may be used for heating. Ceiling height, 9 feet.



Design No. 133



Plan No. 133—Size, 28 by 39 feet.

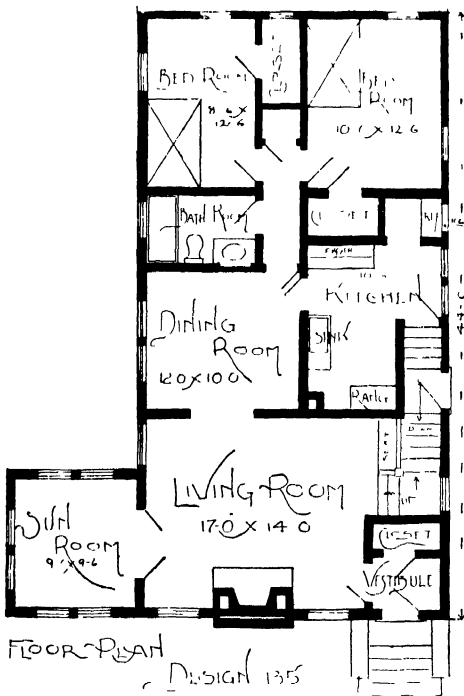


Plan No. 133A—Size, 28 by 38 feet.

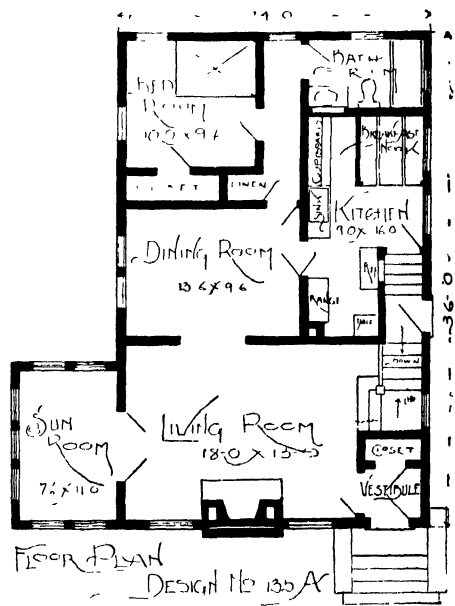
**THIS** bungalow, while extremely simple and economical to construct, has a very pleasing and homelike appearance. The interior arrangements are complete in every respect and embody all modern and convenient features. In one plan, three bed rooms are provided, all connecting to small center hall and bath room, with ample closet room throughout. An 8-inch brick water table extends around house with stucco above. Seven foot basement under entire house, with laundry tubs, etc. Hot water or hot air may be used for heating. Ceiling height, 9 feet.



Design No. 135



Plan No. 135—Size, 24 by 44 feet.

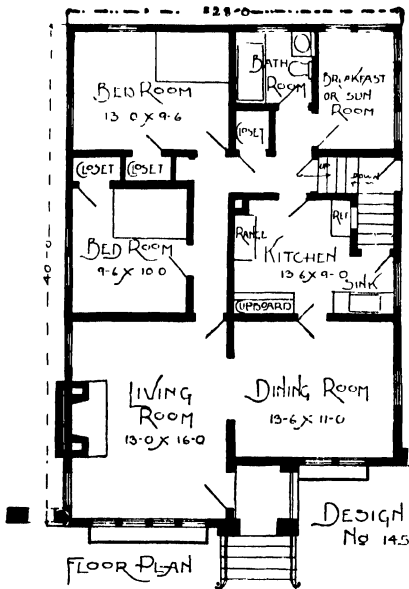


Plan No. 135A—Size, 24 by 36 feet.

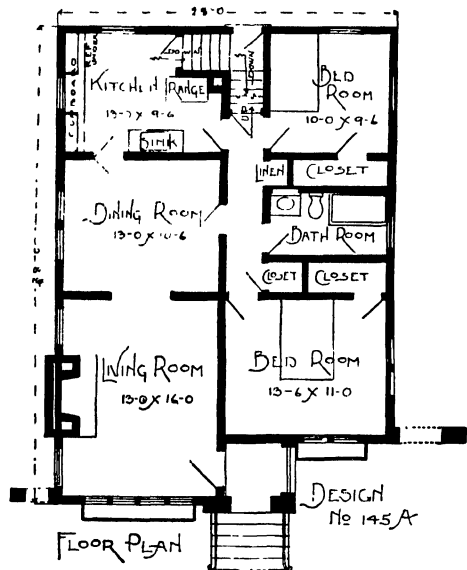
**T**HIS new style bungalow is the very latest in design, a home that any one may feel justly proud to own. The exterior is stucco, with rock face stone trim around front entrance door and on fireplace chimney. Entrance is made through vestibule into large living room, with arch leading to dining room, and French doors leading to sun room, also open stair case, leading to second floor where two extra bed rooms and bath may be provided. The kitchen in each plan has a chimney for range, cupboard, and door to grade entry, leading to basement and outdoors. Seven foot basement under entire house, with cement floor, laundry tubs, vegetable cellar, etc. Hot water or hot air may be used for heating. Ceiling height, 9 feet



Design No. 145



Plan No. 145—Size, 28 by 40 feet.

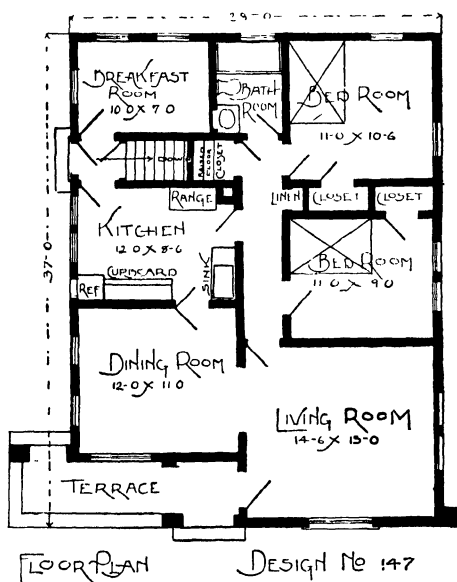


Plan No. 145A—Size, 28 by 38 feet.

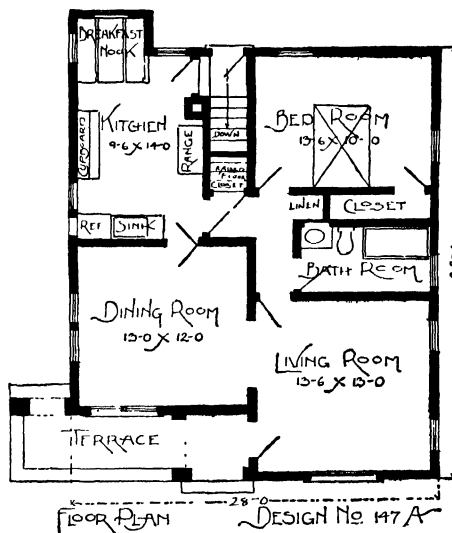
**H**OW a few inexpensive touches can add to the charm of a home is clearly demonstrated in the design of this attractive bungalow. The interior arrangements have been very well planned, with every inch of space utilized. The large well lighted living room with fireplace, and arch leading to dining room, small center hall connecting both bed rooms, kitchen and bath room, large kitchen with space for all required fixtures, chimney for range, door to grade entry, leading to basement and outdoors, all combine in making this a very practical and convenient interior. Seven foot basement under entire house. Hot water or hot air heat. Ceiling height, 9 feet.



Design No. 147



Plan No. 147—Size, 28 by 37 feet.



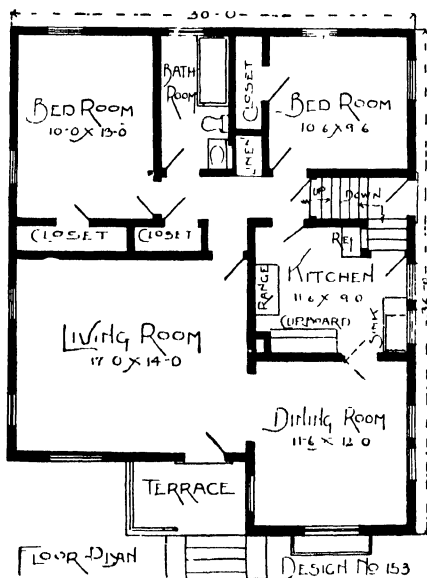
Plan No. 147A—Size, 28 by 32 feet 6 inches.

**T**HIS Mission type bungalow is a very popular type, account of the simplicity in design and economy in construction. The proper planting of shrubbery, will add wonderfully to the already attractive appearance of this unique style home. The floor plan arrangements are ideal in every respect and by eliminating any waste space, good size rooms have been provided, with abundant closet space, large kitchen with space for all required fixtures, door to grade entry, and cozy breakfast nook. Seven foot basement under entire house. Hot water or hot air for heating. Ceiling height, 9 feet.

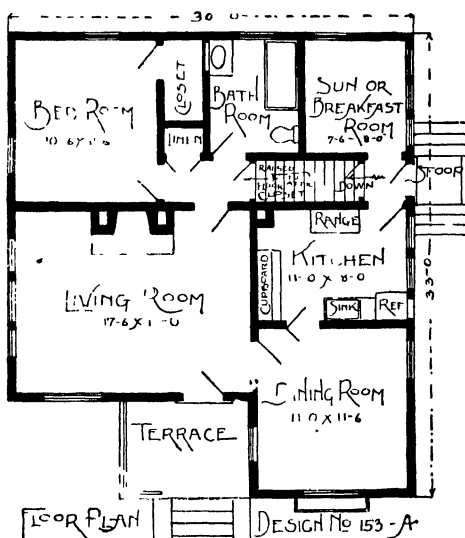




Design No. 153



Plan No. 153—Size, 30 by 36 feet.

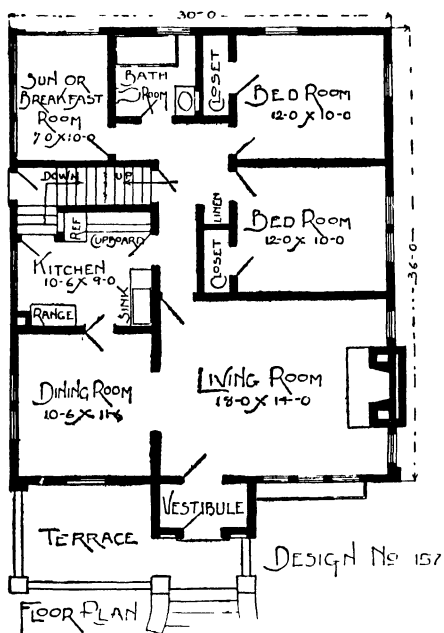


Plan No. 153A—Size, 30 by 33 feet.

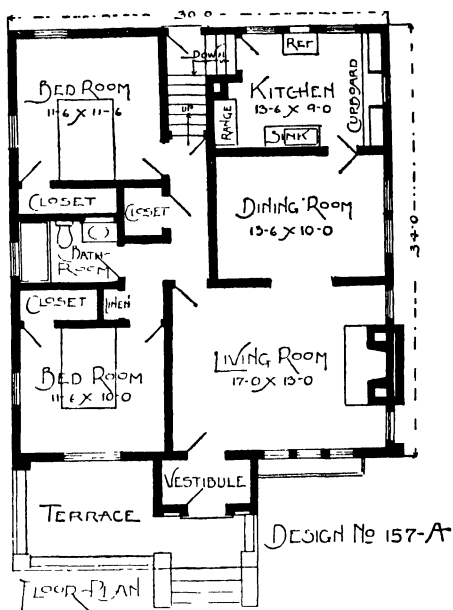
**T**HIS picturesque Spanish design bungalow is an individual type and exceptionally attractive in appearance, and can be built at a very nominal cost, being very simple to construct. The floor plan arrangements are exceptionally well planned, spacious living room with arch leading to dining room, good size bed rooms, roomy closets, well located kitchen with cupboard, chimney for range and door to grade entry, making a very compact, practical and convenient interior. Seven foot basement under entire house. Hot water or hot air may be used for heating. Ceiling height, 9 feet.



Design No. 157



Plan No. 157—Size, 30 by 36 feet.

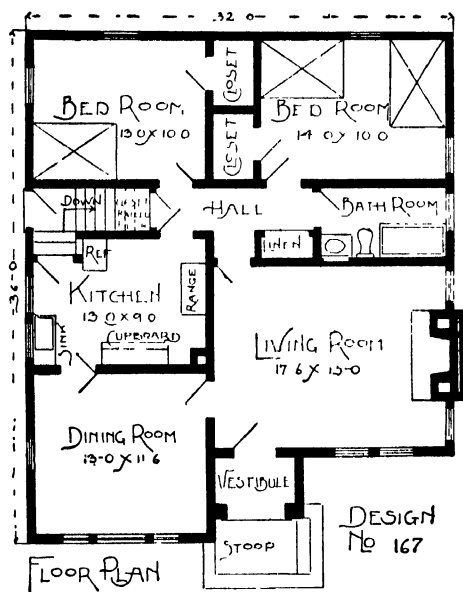


Plan No. 157A—Size, 30 by 34 feet.

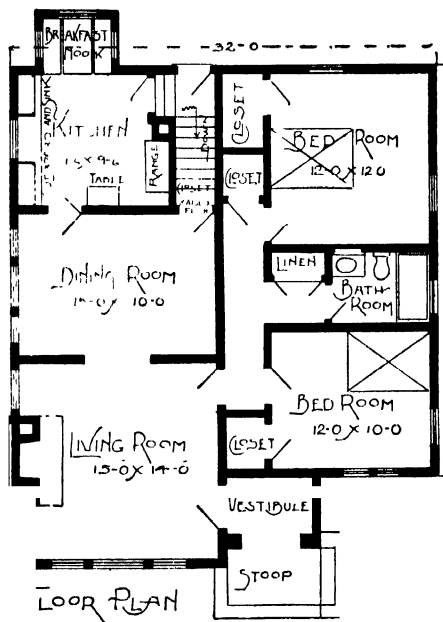
**T**HE design of this bungalow may be termed English type. The front gable effect, projected vestibule entrance, grill work under windows, recessed nook at each side of door, contribute very generously in producing this beautiful exterior. Entrance is made through large well lighted living room with fireplace and arch leading to dining room. The balance of rooms are good size, with abundant closet space. The small center hall connects both bed rooms and bath room and has a stairway leading to attic, where two additional rooms may be provided. Seven foot basement under entire house, with cement floor and laundry tubs. Grade entry, leading to basement and kitchen. Hot water or hot air heat. Ceiling height, 9 feet.



Design No. 167



Plan No. 167—Size, 32 by 36 feet.



Plan No. 167A—Size, 32 by 36 feet.

**T**HIS California style bungalow is a very practical type for erection in any locality. While very costly in appearance the construction is very simple and the home can be built at as low a cost as any other style bungalow of the same dimensions. The exterior is stucco, with tile roof. If desired, composition or stained cedar shingles may be used as effectively. The interior arrangements are perfect in every respect, large rooms, abundant closet space, well equipped kitchen, and grade entry. Seven foot basement under entire house with cement floor and laundry tubs. Hot water or hot air heat. Ceiling height, 9 feet.

