



Design No. 1

Ideal Homes

(TENTH EDITION)

SECTION ONE
(32 Pages)

Bungalows

COMPLETE WITH FLOOR PLANS

Price \$1.00 per copy

SECTION TWO
(32 Pages)

Two Story Houses

Including Semi-Bungalows

COMPLETE WITH FLOOR PLANS

Price \$1.00 per copy

For a free list of plans, or a free copy of the book, send for a copy of the book. For a free list of plans, or a free copy of the book, send for a copy of the book. For a free list of plans, or a free copy of the book, send for a copy of the book.

Plan Service Company

224 SOUTH LEXINGTON, ST. PAUL, MINN.
P. O. BOX 3286 PHONE ELKHURST 2425

WAB SALAR JUNG BAHADUR

SECTION.

Foreword

THE HOMES illustrated in this book are from actual photographs, which combine beauty, convenience and economy and bring to you the very latest in style and design of practical up-to-the-minute architecture. Your home is the reflection of your personality and the expression of your ideas, and with this thought in mind, it is hoped that the suggestions carried out in the interior and exterior planning of the homes shown herein will assist you in selecting a design conforming to your individual taste and requirements.

The proper selection of shrubbery adds wonderfully to the artistic appearance of any home, and in these illustrations we have endeavored to show how the placing of flowers, shrubbery, well located trees, a vine on a trellis—little touches that the home owner can do himself to make a charming spot, though the house itself be small, even plain.

In the preparation of this book, great care has been exercised in selecting these types of homes that are in great demand and that can be constructed simply and economically by any competent carpenter or contractor. The interiors have been carefully and thoughtfully planned and excellent results have been accomplished in the number and size of rooms provided, considering the outside dimensions.



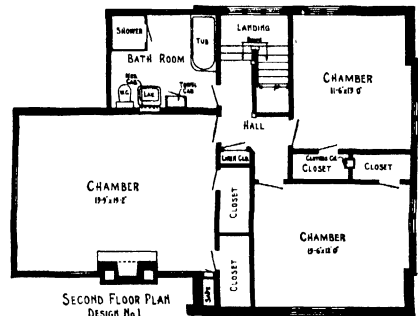
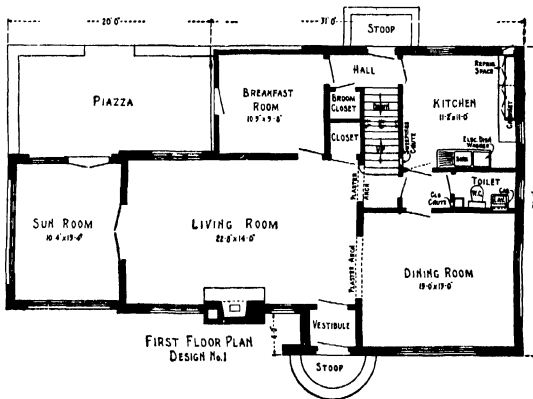
Alternative Floor Plans

To further assist you in the selection of a plan best suited to your requirements, both as to size and room arrangement, we have in most instances shown two or more floor plans for each house design illustrated. After selecting a suitable design, as to the exterior appearance, you should then decide definitely on the number of rooms required. To determine proper size of the various rooms, it would be advisable to measure the rooms in your present home and then compare with measurements shown on plan. If you desire to increase the size of a certain room by diminishing the size of another, it is a very simple matter for the carpenter or contractor to change location of partition walls. This same suggestion applies to location of windows and doors.

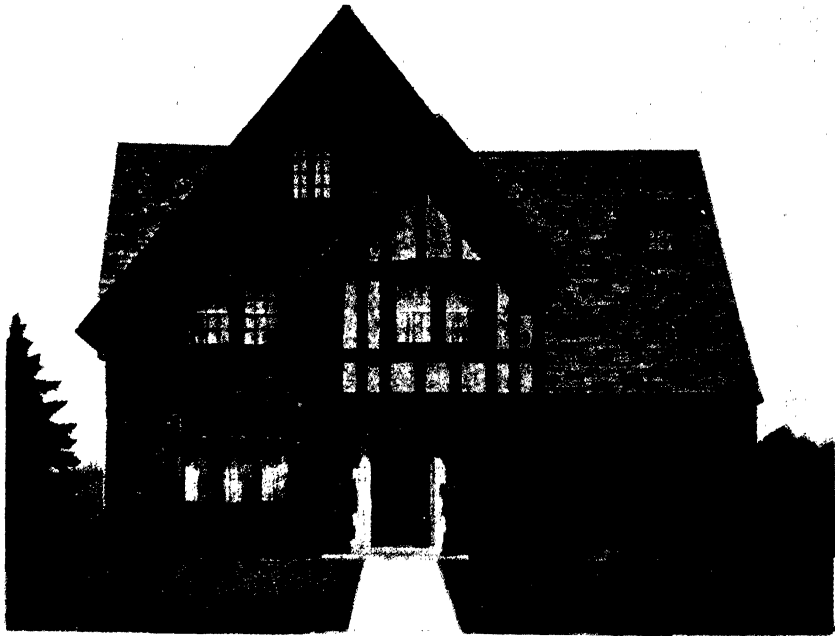
In planning the interiors, we have endeavored to make the arrangement of rooms thoroughly practical and convenient from every standpoint and to utilize every inch of floor space. The homes are all planned in a most economical way so as to eliminate the use of any material not absolutely required and for this reason it is advisable to conform to the outside dimensions of plans shown.



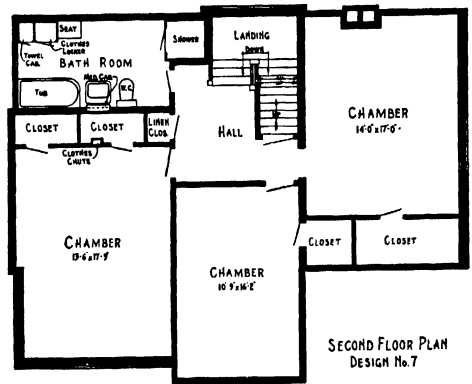
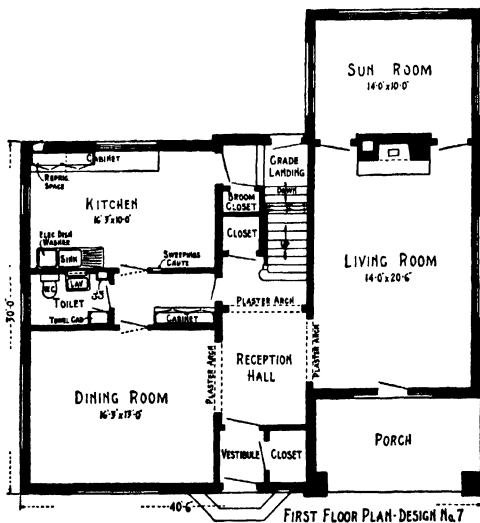
Design No. 1



THIS English type home with its unusual commanding appearance, combining stateliness, stability and individuality is all that the word beautiful implies. Entrance is made through vestibule into a spacious living room, having a very attractive fireplace, French doors leading to sunroom and breakfast room, plaster arch openings to dining room and hall, all combining to produce a palatial and most magnificent interior. A large kitchen is included in the arrangement with the most modern fixtures and conveniences. The second floor arrangement is very spacious, with extra large rooms and clothes closets, center hall connecting all rooms, extra large bathroom with tile floor and walls, equipped with shower, towel cabinet and electric heater built in wall. The owner's chamber has an attractive design fireplace, two closets and extra closet space that may be utilized for safe or cedar closet. The third floor has ample space for maids' room and bath. Seven foot basement extends under entire house, with large recreation room fitted with fireplace. Boiler, laundry, toilet, fruit and storage rooms are also provided. No detail has been omitted in the planning of this home to make it thoroughly modern and up-to-date in every particular, both interior and exterior. The exterior is brick, with stucco trim and slate roof. The house is 30 feet in depth by 51 feet in width.



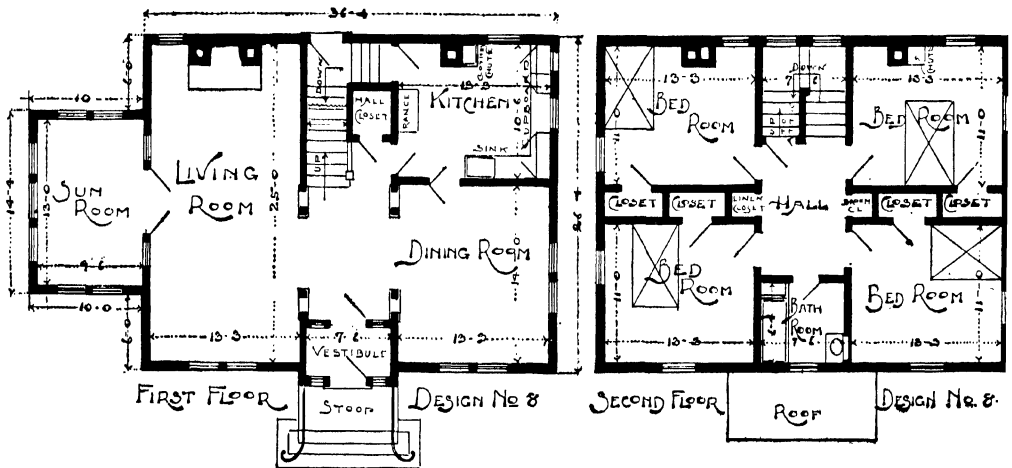
Design No. 7



THIS magnificent English type home is 40 feet, 6 inches in width by 30 feet in depth, exclusive of sunroom projection. The double gable effect, stone trim entrance and attractive roof design, all combine in producing an exterior so much desired but seldom obtained in English type designing. The interior planning, with vestibule entrance and closet adjoining, reception hall with artistic plaster arch openings to living room, dining room and grand staircase, large living room with unique design fireplace, and French doors leading to porch and to sunroom, makes this a most palatial interior arrangement. The kitchen is very roomy and equipped with latest design fixtures and conveniences, and has a door to rear entry hall with broom closet adjoining. A toilet room is located between dining room and kitchen and may be utilized for breakfast room if so desired. The second floor arrangement includes three extra large chambers, each with roomy closets and connected with center hall. The bathroom is very good size, has tile floor and walls, up-to-date fixtures, including shower, towel cabinet, clothes locker and electric heater built in hall. The third floor arrangement provides for maids' room and bath, storage and cedar closets. Seven foot basement extends under entire house, with large recreation room, boiler, laundry, preserve, storage and toilet rooms.



Design No. 8

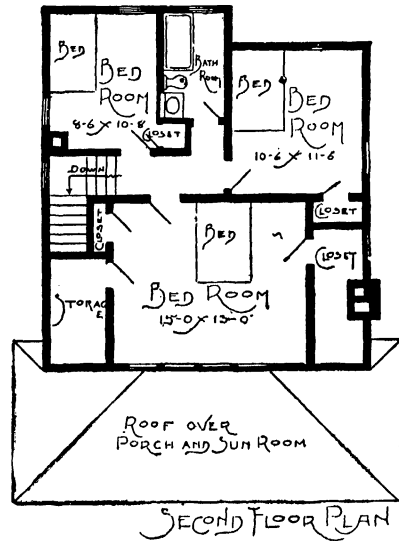
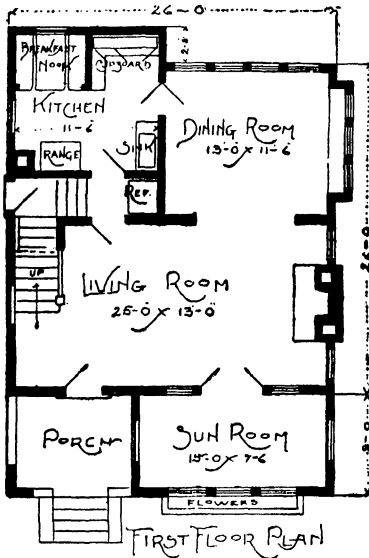


THIS attractive home of English Colonial architecture is 36 feet in width by 26 feet in depth, exclusive of sun room. The exterior appearance commands an appearance of stateliness, stability and individuality. The interior with vestibule entrance, reception hall, grand staircase, and arch opening into dining room, also to living room, which has a fireplace and French doors leading to sunroom, all combine in making this a most gorgeous and palatial interior arrangement. The kitchen is provided with large cupboard space, chimney for range, and door to grade landing leading to basement and outdoors. There are four large bedrooms on second floor, each having ample closet space, and connecting to center hall and bathroom. The finish in living room, dining room and hall can be mahogany veneer, oak, finished Old English or silver gray, or birch, stained red or brown mahogany. The sunroom should be of birch, finished old ivory or French gray. The balance of the house can be birch, white enameled, with mahogany stained doors on second floor. Basement under entire house, fitted with storage room, laundry tubs, vegetable cellar, and dust-proof coal bin. Height of ceilings: First floor, 9 feet; second floor, 8 feet.

5



Design No. 10

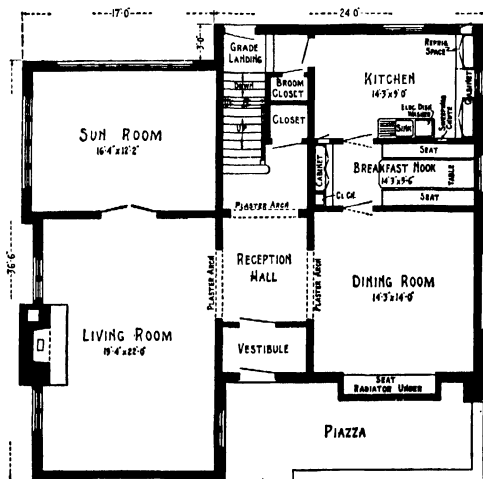


THIS attractive semi-bungalow is 26 feet wide by 26 feet in depth, exclusive of sunroom. The large living room having fireplace, and French doors opening into sunroom, also arch or French doors opening into dining room, produces a beautiful effect. The kitchen is provided with a cupboard, chimney for range, breakfast nook, and door to grade landing leading to basement and outside. Three bedrooms are provided on second floor, with ample closet space for each. The small center hall connects all chambers and bathroom. A brick veneer water table extends around entire house, with lap siding above. If desired, stucco or a combination of brick and stucco can be substituted in place of the siding. Basement under entire house, equipped with laundry tubs, vegetable cellar and dust-proof coal bin. Hot water or hot air can be used for heating.

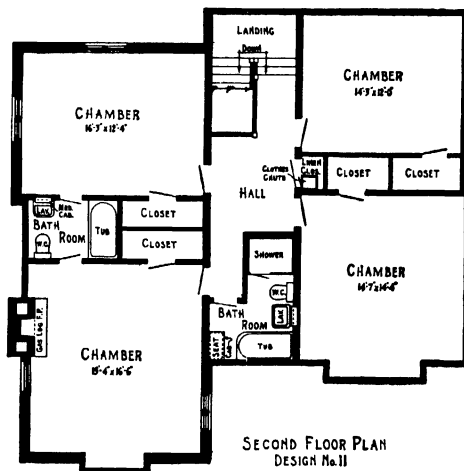
Height of ceilings: First floor, 9 feet; second floor, 8 feet.



Design No. 11



FIRST FLOOR PLAN-DESIGN No. 11

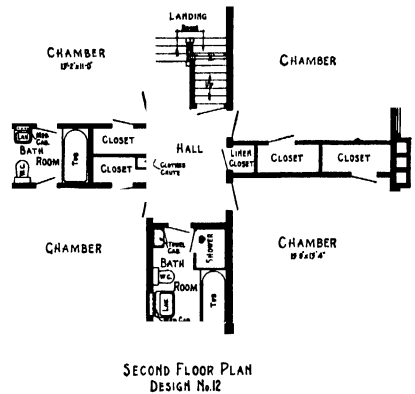
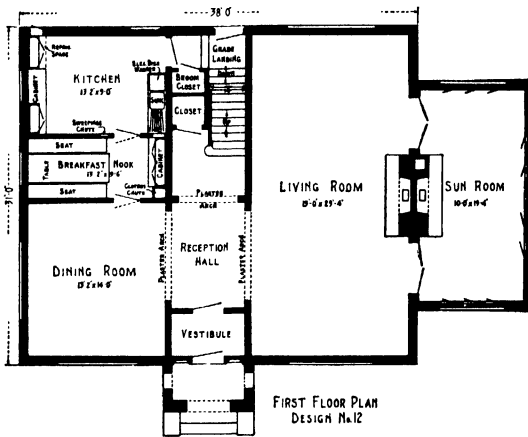


SECOND FLOOR PLAN
DESIGN No. 11

THIS unusually attractive home is English type, size 36 feet, 6 inches in depth by 41 feet in width. The exterior has a very striking appearance and denotes the very latest in architectural design. Entrance is made through vestibule to reception hall, with artistic plaster arch openings to living room, dining room and adjoining hall with coat closet and staircase leading to second floor. The large living room is exceptionally well lighted and has an attractive design fireplace, with French doors leading to large bright sunroom. The dining room is good size and is separated from kitchen by a very cheerful breakfast room with table, seats and cabinet. The kitchen is very roomy and equipped with modern fixtures and conveniences, including chute for sweepings, and has a door to rear entry hall, leading to basement and outdoors. Four large chambers are provided on second floor, each with roomy closets. The center hall has a linen closet, clothes chute and connects all rooms. The bathroom is completely equipped, has tile floor and walls and is fitted with hinged seat towel cabinet, shower, and electric heater built in wall. The owner's chamber is very roomy and well lighted, has gas log fireplace and connecting bathroom. The third floor arrangement provides for maids' room and bath, storage and cedar closets. Seven foot basement extends under entire house, with large recreation room, boiler, preserve, laundry, toilet and storage rooms.



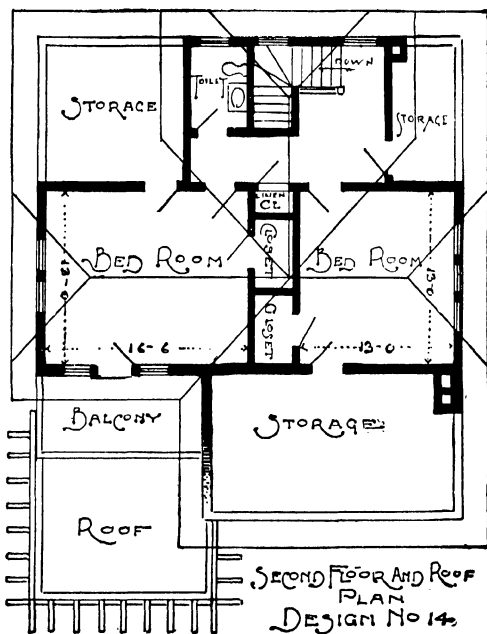
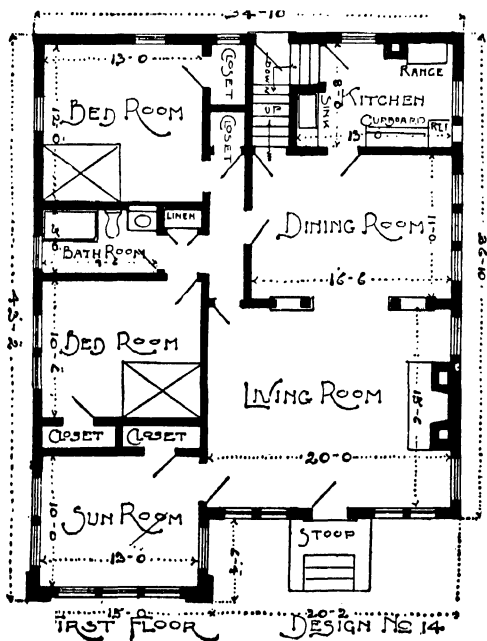
Design No. 12



THIS English colonial home is a decided departure from the usual type and presents a much richer and more attractive appearance, brought about by the entrance design, stone trim and front gable. The interior arrangement is all that could be desired, with front vestibule entrance, center hall with plaster arch openings to living room, dining room, and grand staircase. The exceptional large living room has a fireplace with French doors on either side, leading to the cheerful sunroom which also has a fireplace. The dining room is large and well lighted and connects with breakfast room which has table, seats, cabinet and clothes chute. The kitchen is very roomy and fitted with all essentials, including chute for sweepings and door to rear entry hall, leading to basement and outdoors. Four large well lighted chambers are provided on second floor, each having large closets. The center hall has a clothes chute, linen closet and connects all rooms. The bathroom is good size and well lighted and has tile floor and walls, towel cabinet, shower, and electric heater built in wall. The third floor arrangement includes maids' room and bath, storage and cedar closets. Seven foot basement under entire house, with large recreation room, laundry, preserve, boiler, toilet and storage rooms. The exterior dimensions are 31 feet in depth by 38 feet in width, exclusive of the sun room projection.

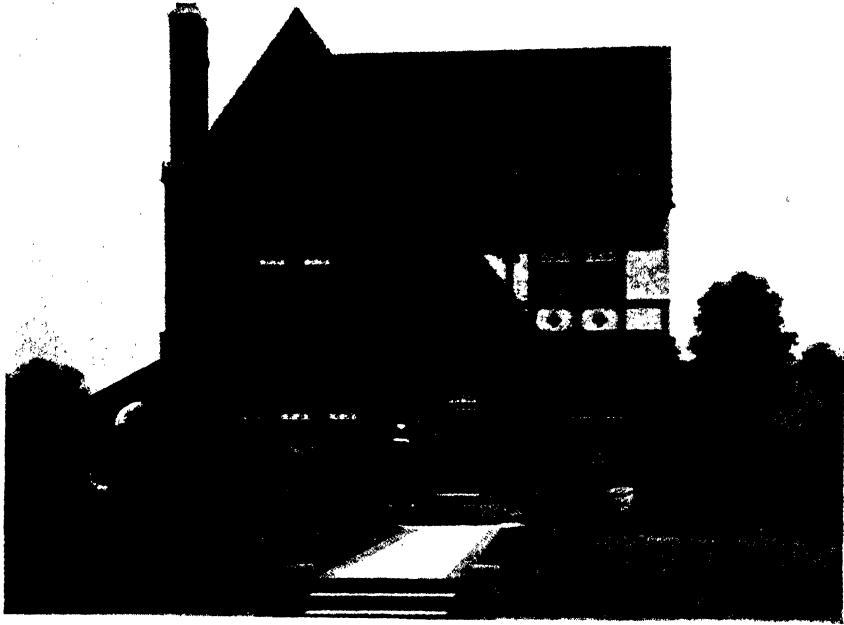


Design No. 14

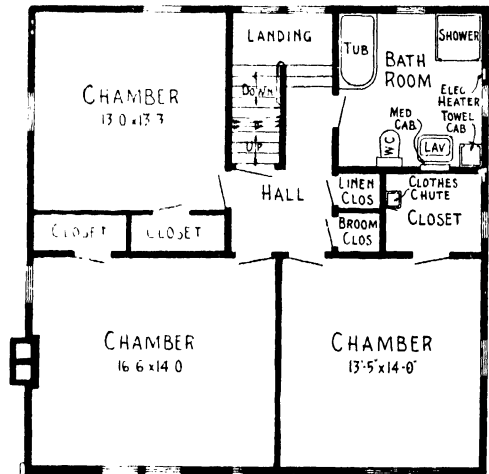
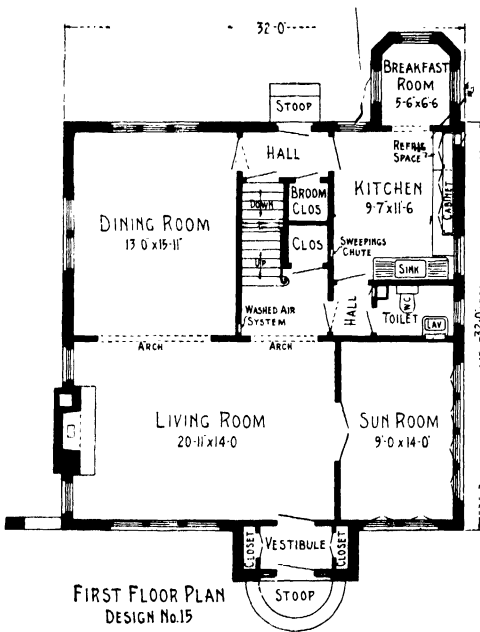


THE plan for this attractive semi-bungalow is 34 feet 10 inches in width by 36 feet 10 inches in depth, exclusive of sunroom extension. The exterior design is a decided departure from the ordinary type and is exceedingly artistic in appearance. The interior arrangement is very spacious and compact, with large living room, having fireplace, French door leading to sunroom, and bookcase arch leading into dining room, also door leading to center hall, which connects both bedrooms and bathroom. A stairway, with entrance from dining room, leads to second floor, where two large bedrooms and toilet are provided. A brick water table extends around house, with stucco above. Basement under entire house, fitted with laundry tubs, vegetable cellar, and dust-proof coal bin. Height of ceiling: First floor, 9 feet; second floor, 8 feet.

WAB SALAR JUNG BAHADUR
 © Plan Service Co., St. Paul, Minn.



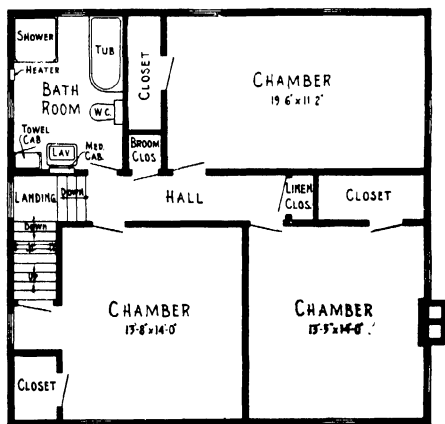
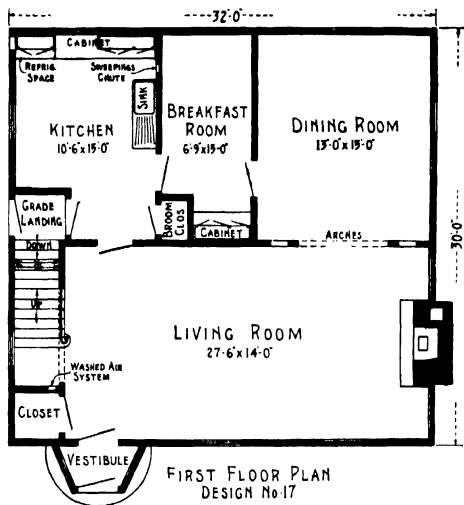
Design No. 15



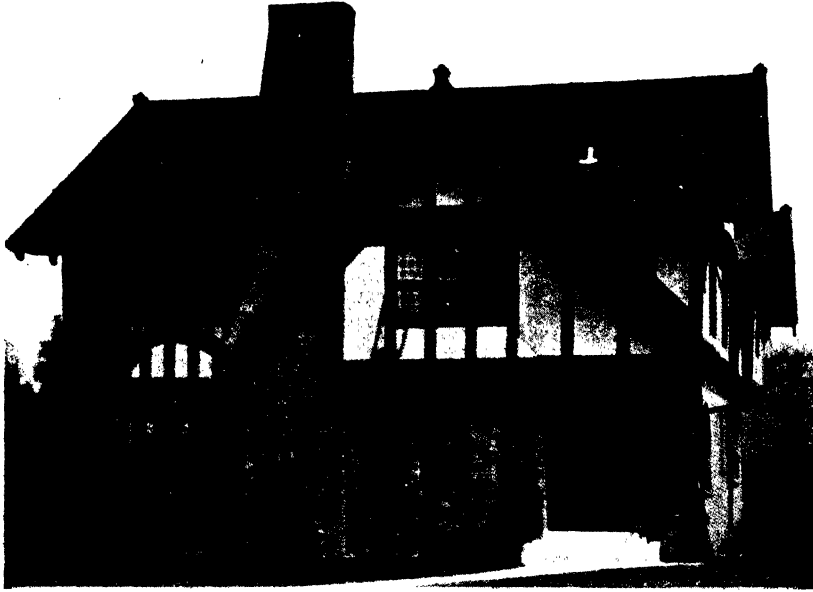
THE projected vestibule entrance, front gable effect, with combination of brick and stucco, all combine in producing this very pleasing and latest style exterior. The house is 32 feet square, exclusive of vestibule and breakfast room projections. The interior arrangement presents a very palatial and homelike appearance, with large well lighted living room, having fireplace, French doors leading to sun room and plaster arch opening to dining room and stairway hall. Three good size chambers are provided on second floor, each with roomy closets and connected to center hall and bathroom. The center hall has a linen and broom closet, also stairway leading to third floor where there is ample space for maids room and bath, cedar and storage closets. Seven foot basement under entire house, fitted with laundry, boiler, vegetable, and recreation rooms.



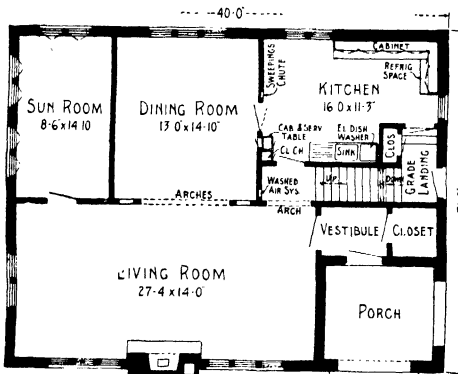
Design No. 17



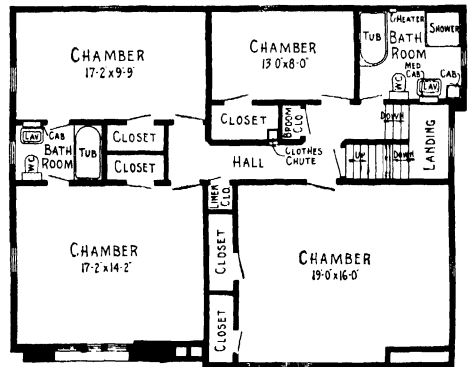
THIS Colonial home is 32 feet in width by 30 feet in depth. The interior arrangement is very spacious and embodies all the latest features of the up-to-date home, with exceptional large living room, having fireplace and triple plaster arch opening into dining room, cozy breakfast room with cabinets, and thoroughly modern kitchen having ample cabinet space, broom closet, chute for sweepings, and door to grade landing, leading to basement and outdoors. Three good size bedrooms are provided on second floor, each having large closets and connecting to center hall and bathroom. A brick water table extends around house, with wide lap siding above. Seven foot basement under entire house, fitted with boiler, vegetable, laundry and recreation rooms.



Design No. 20



FIRST FLOOR PLAN
DESIGN No 20

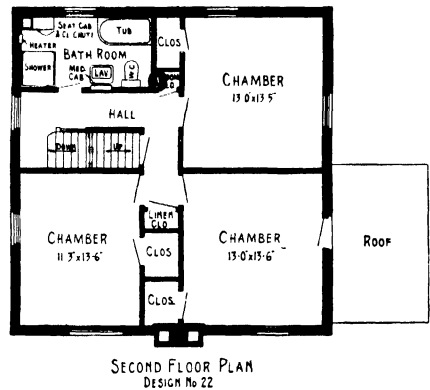
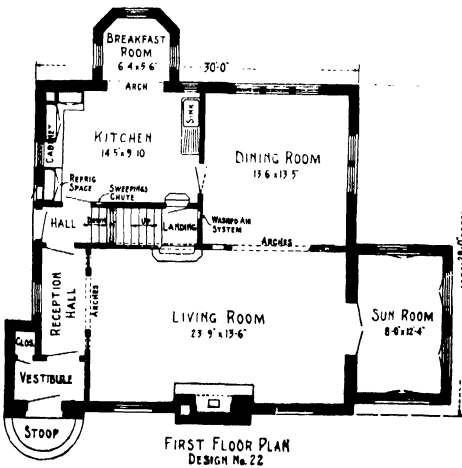


SECOND FLOOR PLAN
DESIGN No 20

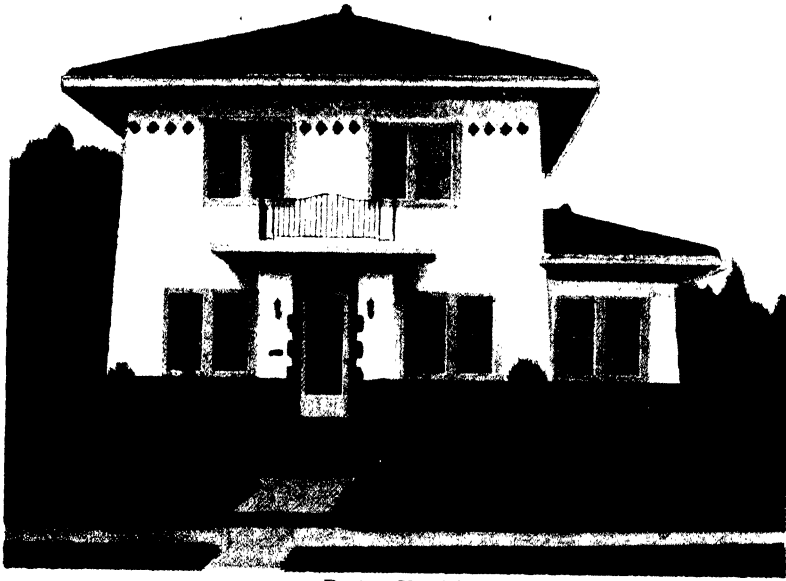
THIS English type home, size 40 by 31 feet, is strictly the very latest and popular exterior design. Entrance is made through vestibule into large well lighted living room which has a fireplace, triple plaster arch opening to dining room, and French door, leading to sun room. The kitchen is very roomy and provided with all up-to-date conveniences, including chute for sweepings, clothes chute, ample cabinet space, and door to grade landing, leading to basement and outdoors. The second floor arrangement is very compact and includes three large size bedrooms and one smaller size room, each with abundant closet space and connected to center hall and bathroom. Seven foot basement under entire house, fitted with boiler, laundry, fuel, preserve and recreation rooms.



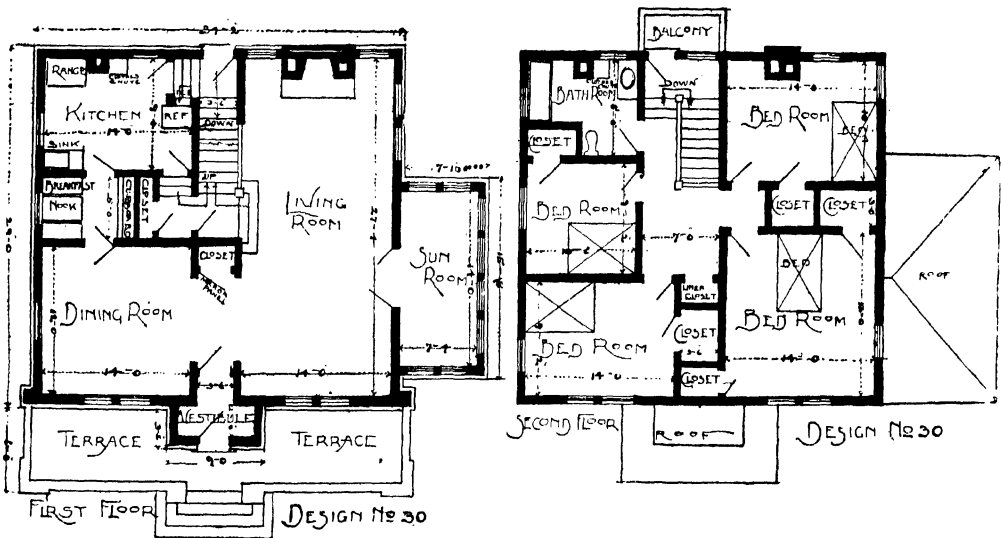
Design No. 22



THIS strictly new type home embodies the English design, so much in demand today. The house is 30 feet in width by 29 feet in depth, exclusive of the sunroom, breakfast room and vestibule projections. Entrance is made through vestibule to reception hall with triple plaster arch opening to living room, which is provided with fireplace, French doors leading to sunroom and triple plaster arch opening to dining room. The kitchen is very spacious and thoroughly up-to-date, having ample cabinet space, sweepings chute, breakfast room projection, door to landing, leading to second floor, also door to grade entry hall. The second floor arrangement includes three large bedrooms, each having large closets and connected to center hall, which has a linen and broom closet, also door to stairway, leading to third floor, where maid's room, bath, cedar and storage closets are provided. Seven foot basement under entire house, with boiler, vegetable, laundry and recreation room.



Design No. 30

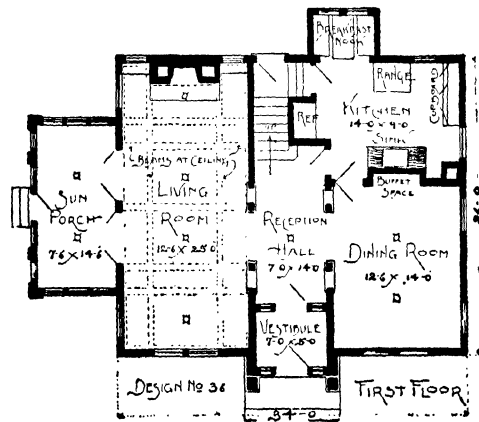
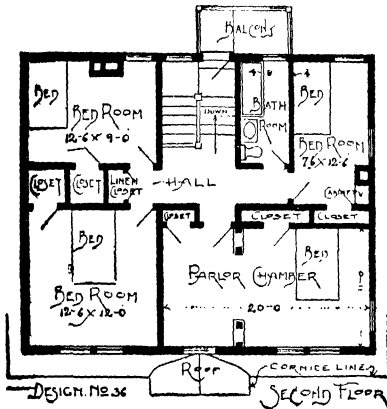


THIS Southern California style home is 34 feet in width by 29 feet in depth, exclusive of sunroom. The exterior with battered buttresses, wide eaves, tile roof, and terrace, is very pleasing in design. The large living room with fireplace, magnificent staircase, French doors leading into sunroom, center hall with mirror panel door to coat closet, an arch opening into dining room and living room, makes a most perfect and luxurious interior. The kitchen has a breakfast nook, cupboard, chimney for range, door to grade landing, leading to basement and outdoors, also door to combination staircase, leading to second floor. Four bedrooms are provided on second floor, each with ample closet space and connecting to center hall and bathroom. There is a linen closet in hall, and door to rear balcony for airing bedding. The exterior is of brick from grade line to underside of first floor windows, with stucco above. Basement under entire house, fitted with storage room, vegetable cellar, laundry tubs, and dust-proof coal bin. Hot water heat is recommended.

Height of ceilings: First floor, 9 feet; second floor, 8 feet.



Design No

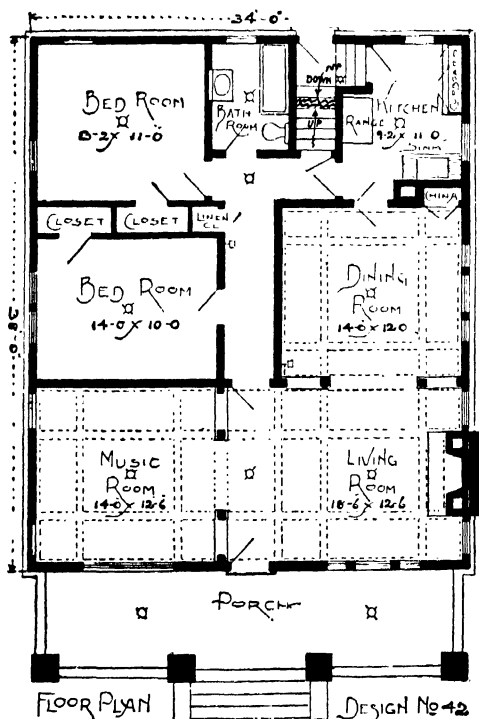


THIS exceptionally classy Dutch Colonial house is 34 feet in width by 26 feet in depth, exclusive of sunporch. The interior planning is all that could be desired for this style home. The large living room with fireplace, French doors leading to sunporch, large reception hall with grand colonial staircase, vestibule and large dining room, all combine to produce a most magnificent interior. The kitchen is provided with cupboard, chimney for range, breakfast nook, and door to grade landing, leading to basement and outside. The second floor arrangement is very convenient and attractive, having four bedrooms, including the parlor chamber, each room having large closets, and connecting with center hall. A brick water table extends around entire house, with wide lap siding above. Basement under entire house, equipped with laundry tubs, vegetable cellar, and dust-proof coal bin. Height of ceilings: First floor, 9 feet; second floor, 8 feet.

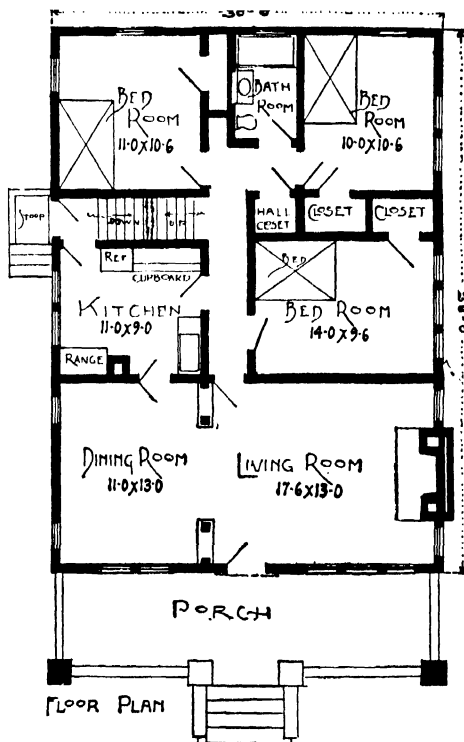
15



Design No. 42



FLOOR PLAN DESIGN No. 42
Plan No. 42—Size, 34 by 38 feet.

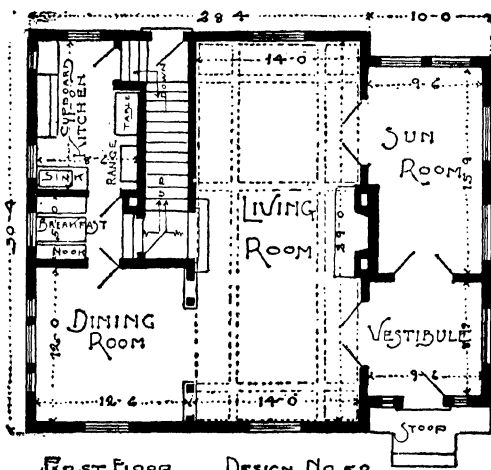


FLOOR PLAN
Plan No. 42A—Size, 30 by 38 feet.

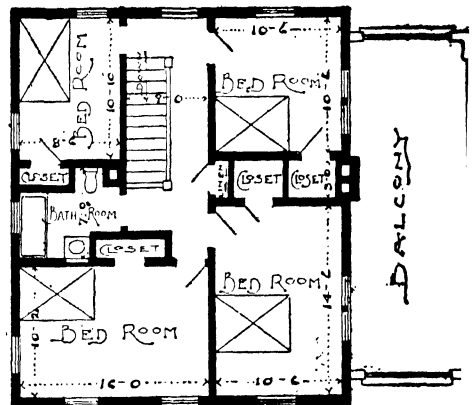
THIS extremely attractive bungalow has a very pleasing and artistic appearance, the floor plan illustrations affording a choice of arrangement. The interior arrangements are very well planned, embodying all modern conveniences. The small center hall connects all chambers, living room and bath room, and has a stairway leading to second floor, which is very roomy, with ample space for a couple of extra rooms that can be finished when desired. The exterior construction is of brick from grade to under side of windows, with lap siding above. Seven foot basement under entire house, equipped with laundry tubs, vegetable cellar and dust proof coal bin. Hot water or hot air may be used for heating. Ceiling height, 9 feet.



Design No. 52



FIRST FLOOR DESIGN NO. 52



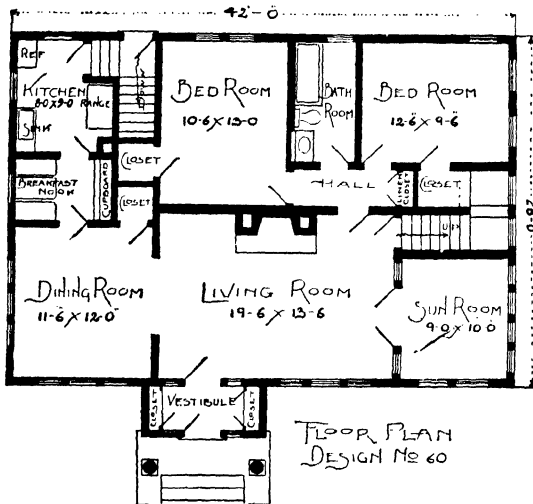
SECOND FLOOR DESIGN NO. 52

THIS exceptional attractive California style home is 28 feet 4 inches in width, by 30 feet 4 inches in depth, exclusive of vestibule and sunroom. The interior arrangement is very spacious and luxurious. The large living room with fireplace, having French doors on either side, leading to vestibule and to sunroom, and artistic bookcase arch leading into dining room, makes a perfect interior. A cozy breakfast nook is located between dining room and kitchen, with entrance to combination staircase, leading to second floor. The kitchen has a cupboard, chimney for range, and door to grade landing, leading to basement and outdoors. Four bedrooms are located on second floor, each having ample closet space and connected to small center hall and bathroom. Basement under entire house, fitted with laundry tubs, vegetable cellar, and dust-proof coal bin. Height of ceilings: First floor, 9 feet; second floor, 8 feet.

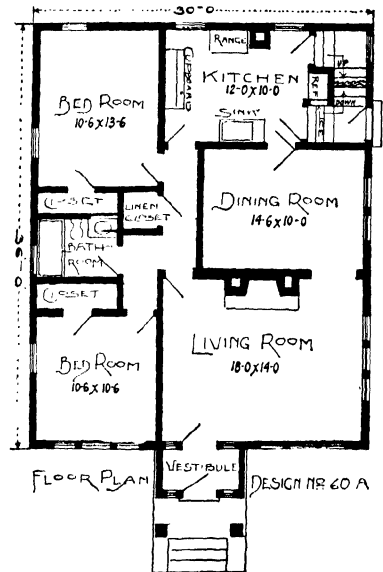
NOTE: Lumber, brick or a combination of both may be substituted in place of stucco.



Design No. 60



Plan No. 60—Size, 42 by 28 feet.

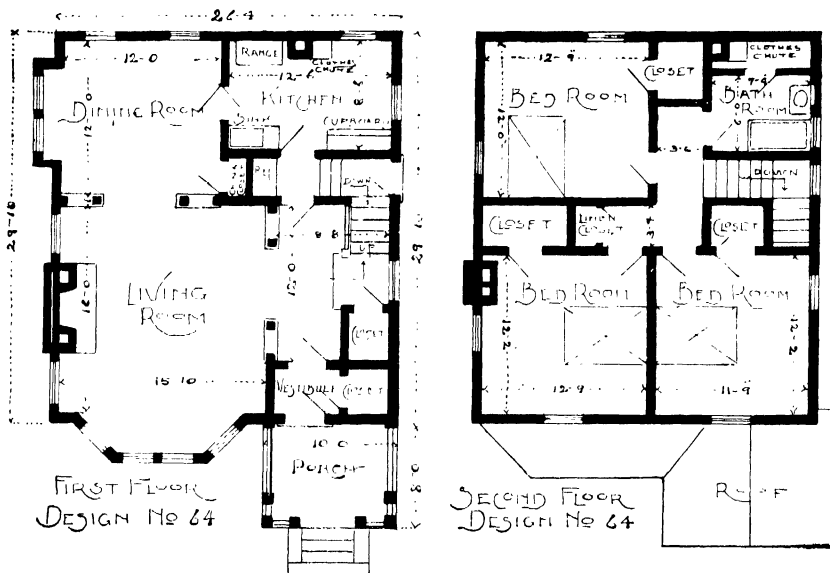


Plan No. 60A—Size, 30 by 36 feet.

THIS unique and distinctive style bungalow, designed similar to the English Colonial type, has a very palatial and homelike interior arrangement, combining many features found in the larger and more expensive homes. A stairway to second floor is provided for in each plan, where two good size rooms can be finished when desired. The kitchen has a cupboard, chimney for range, and door to grade entry, leading to basement and outdoors. A 12-inch smooth troweled water table extends around house, with lap siding above. Seven foot basement under entire house, fitted with laundry tubs, storage room, vegetable cellar and dust proof coal bin. Hot water or hot air may be used for heating. Ceiling height, 9 feet.



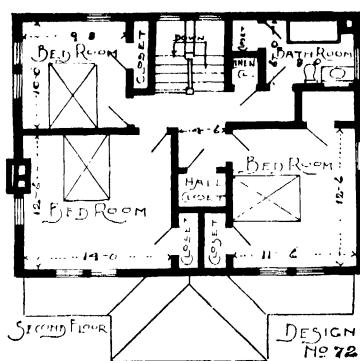
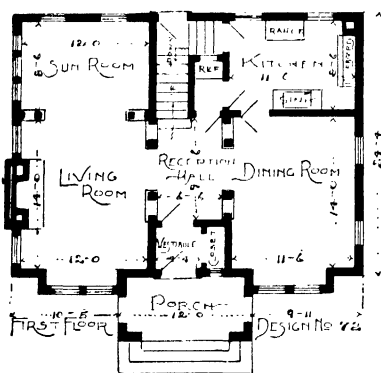
Design No. 64



THE plan for this house is 26 feet 4 inches wide, by 29 feet 10 inches in depth. The exterior design is very pleasing in appearance, simple and economical in construction. The interior arrangement is very compact, practical and convenient. Entrance is made through vestibule to small reception hall, which has an artistic arch opening into the well lighted living room, which has a fireplace, and arch opening into dining room. The kitchen has a cupboard, clothes chute, chimney for range, and door to grade entry, leading to basement and outdoors. Three bed rooms are provided for on second floor, each having good size clothes closets, and connecting to center hall and bath. A 27-inch brick water table extends around house, with stucco above. Basement under entire house, fitted with laundry tubs, vegetable cellar, and dust-proof coal bin. Hot water or hot air can be used for heating. Height of ceilings: First floor, 9 feet; second floor, 8 feet.



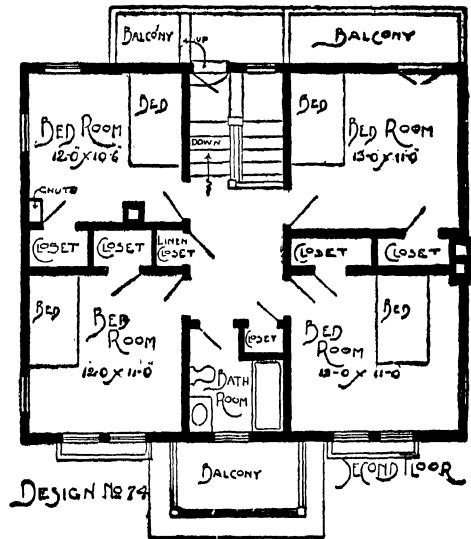
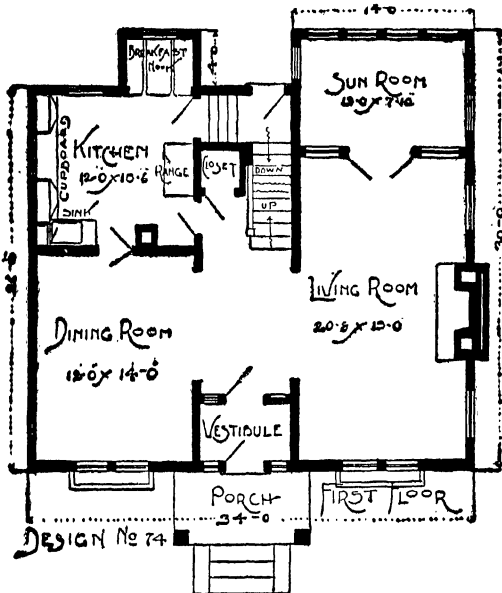
Design No. 72



THIS plan is 32 feet 4 inches wide by 24 feet 4 inches in depth. For a plain square type home, the exterior is exceptionally pleasing. The interior arrangement is very palatial, with vestibule entrance, reception hall, with artistic arch opening into dining room, also to living room, which has a fireplace, and French doors leading to sunroom, all combine in making this an ideal interior arrangement. The kitchen has a cupboard chimney for range, and door to grade landing, leading to basement and outdoors, also refrigerator space, which is iced from rear entry. Three good sized bed rooms are provided for on second floor, each having ample closet space, and connected with center hall and bath room. The exterior is stucco, although siding, or a combination of brick and stucco can be used if desired. Basement under entire house, fitted with laundry tubs, vegetable cellar, and dust-proof coal bin. Hot water or hot air can be used for heating. Height of ceilings: First floor, 9 feet; second floor, 8 feet.



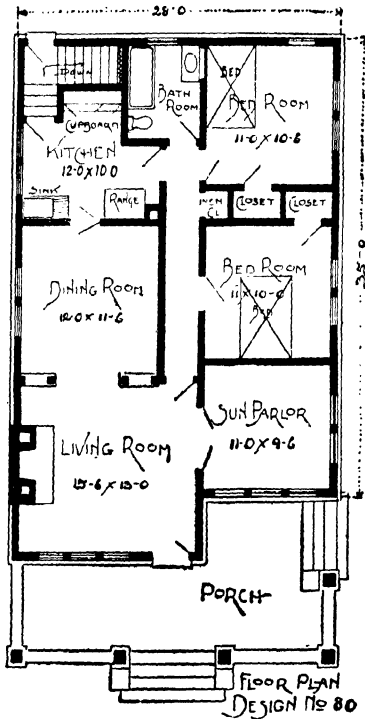
Design No. 74



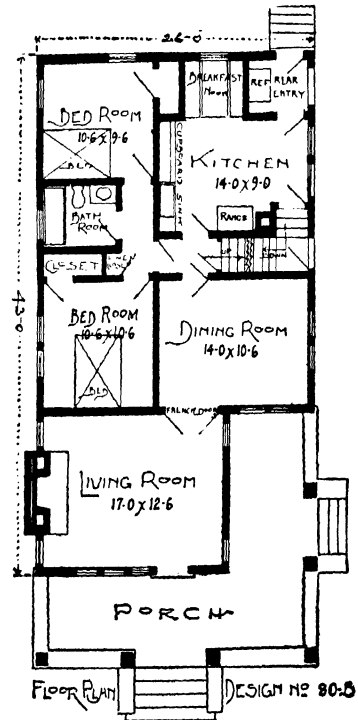
THIS attractive full two-story house is 34 feet in width by 26 feet in depth. The interior arrangement is very spacious and embodies all conveniences. The large center hall, having grand staircase, dining room on one side, with large living room on other side, having fireplace and French doors leading into sunroom, all combine in producing a thoroughly practical and strictly modern interior. The kitchen is provided with cupboard, chimney for range, breakfast nook, door leading to center hall, also door to grade landing, leading to basement and outside. There are four large roomy chambers on second floor, each having ample closet space, with access to center hall and bathroom. A linen closet, clothes chute, and rear balcony for airing bedding is included in this floor plan arrangement. A brick water table extends around house, with wide lap siding above. Basement under entire house, fitted with laundry tubs, storage room, vegetable cellar and dust-proof coal bin. Height of ceilings: First floor, 9 feet; second floor, 8 feet 3 inches.



Design No. 80



Plan No. 80—Size, 28 by 40 feet.

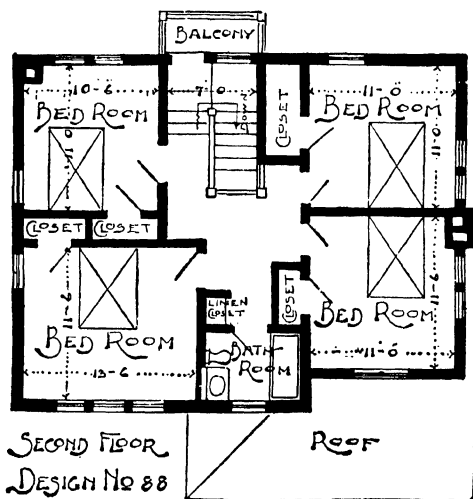
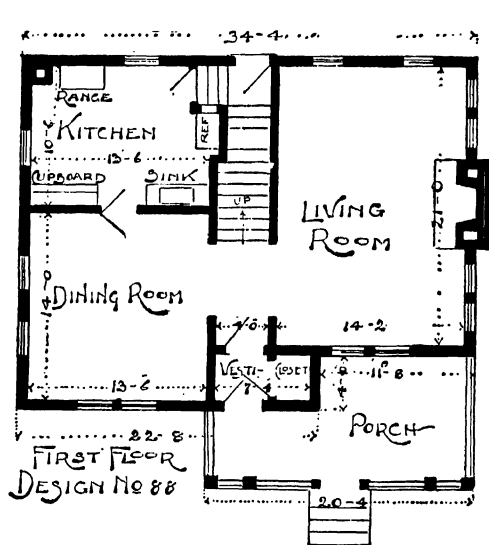


Plan No. 80B—Size, 26 by 43 feet.

CALIFORNIA style. This bungalow with two floor plan arrangements, is a distinctive type and extremely attractive in appearance. The exterior is brick from grade to underside of windows, with siding above. The interior arrangements are well planned, and produce a very luxurious interior. A small center hall connects all chambers with bath room. Seven foot basement under entire house completely equipped. Hot water or hot air may be used for heating. Ceiling height, 9 feet.



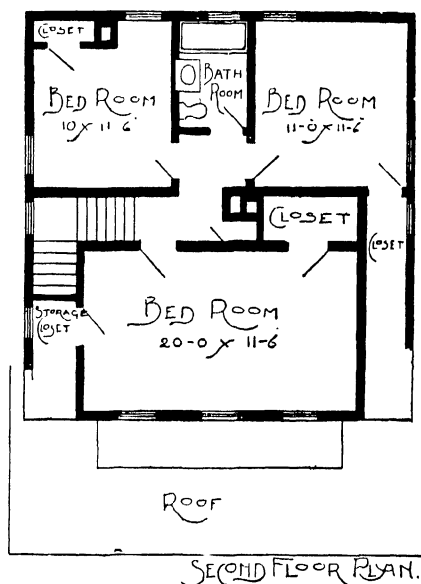
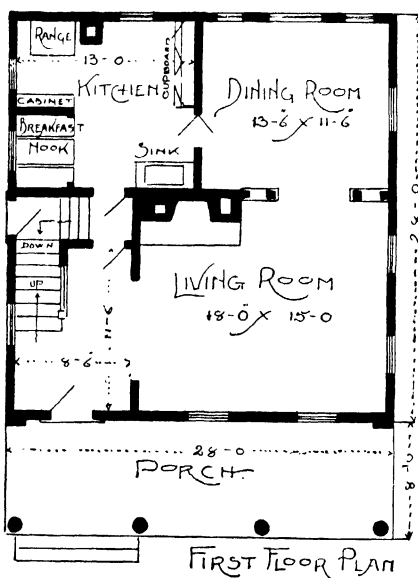
Design No. 88



THIS house, size 34 feet 4 inches in width by 26 feet 4 inches in depth, is the very latest in design and exceptionally artistic in appearance. The interior arrangement is very spacious and homelike. The dining room and living room have an abundance of light and are very good sized rooms. The kitchen has a cupboard, chimney for range, refrigerator space, with outside icing, and door to grade landing, leading to basement and outdoors. Four good size bedrooms are provided for on second floor, each having ample closet space and connecting to center hall and bathroom. A brick water table extends around house, with stucco above. The finish in hall, dining room and living room can be oak, finished Old English or silver gray, or birch, stained red or brown mahogany. The finish in balance of house can be fir or birch, white enameled, with mahogany stained red doors on second floor. Basement under entire house, fitted with laundry tubs, vegetable cellar and dust-proof bin. Height of ceilings; First floor, 9 feet; second floor, 8 feet.



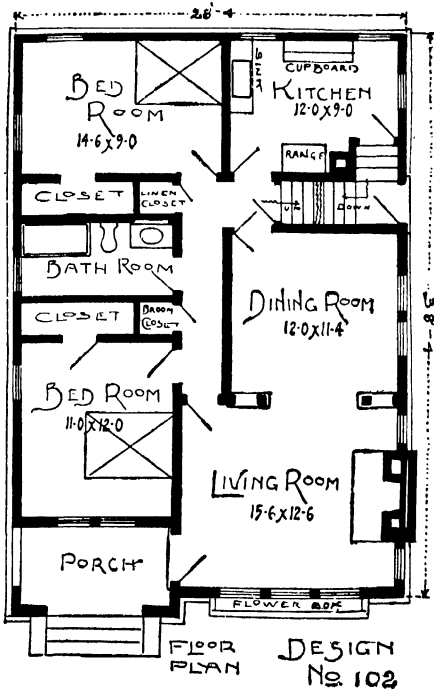
Design No. 94



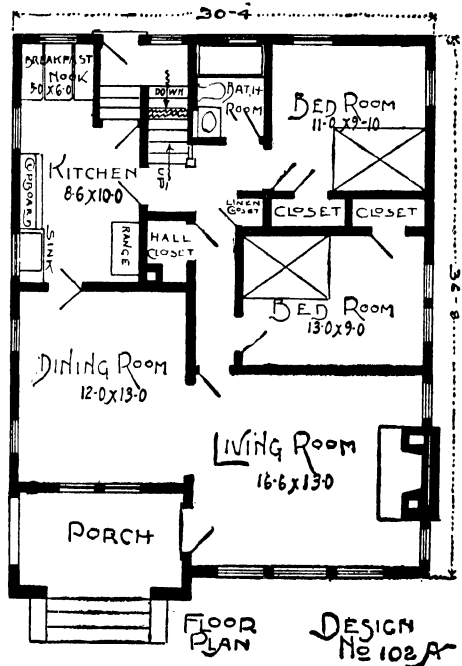
THIS Colonial style house is 28 feet square. The living room is spacious and has a fireplace, and arch leading into dining room. The kitchen has a cupboard, chimney for range, breakfast nook, and door to grade landing, leading to basement and outdoors. There are three bedrooms on second floor, each with ample closet space, and connecting to center hall and bathroom. An 8-inch brick water table extends around house, with wide lap siding above. If desired, stucco or a combination of brick and stucco can be substituted in place of the lap siding. Basement under entire house, fitted with laundry tubs, vegetable cellar and dust-proof coal bin. Height of ceilings: First floor, 9 feet; second floor, 8 feet.



Design No. 102



Plan No. 102—Size, 28 by 38 feet.

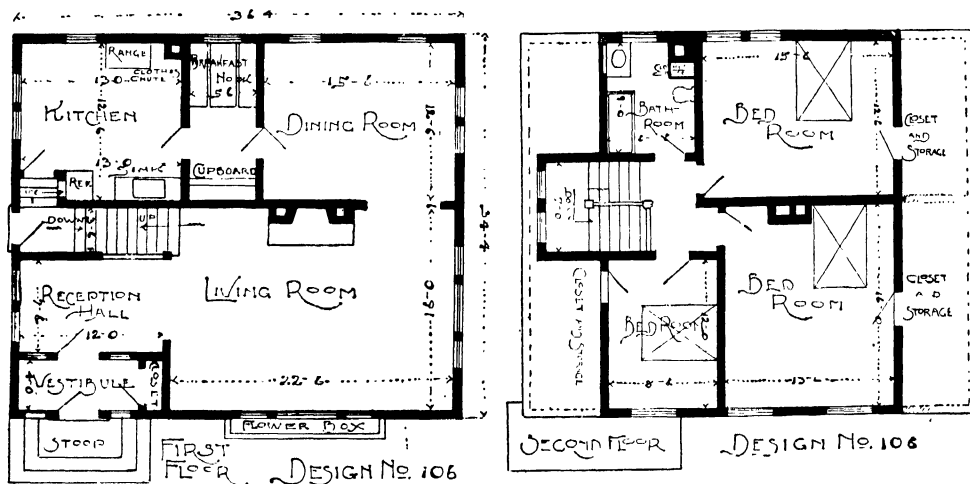


Plan No. 102A—Size, 30 by 36 feet, 6 inches.

THE use of brick from grade to underside of windows and stucco above, produces a very pleasing combination and contributes very materially to the artistic appearance of this bungalow, which is planned in two sizes. The interior arrangements are ideal in every particular with small center hall connecting all rooms in house except dining room. A stairway in hall leads to second floor, which is very roomy, and two good sized rooms can be finished on this floor when desired. Seven foot basement under entire house, fitted with laundry tubs, vegetable cellar and coal bin. Hot water or hot air may be used for heating. Ceiling height, 9 feet.



Design No. 106

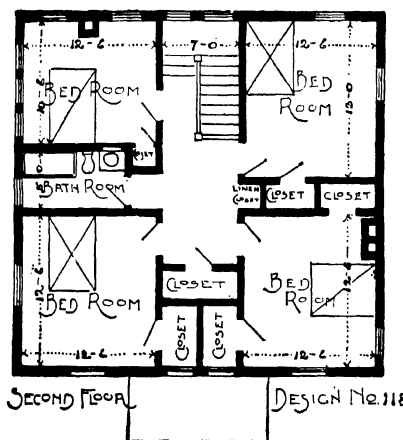
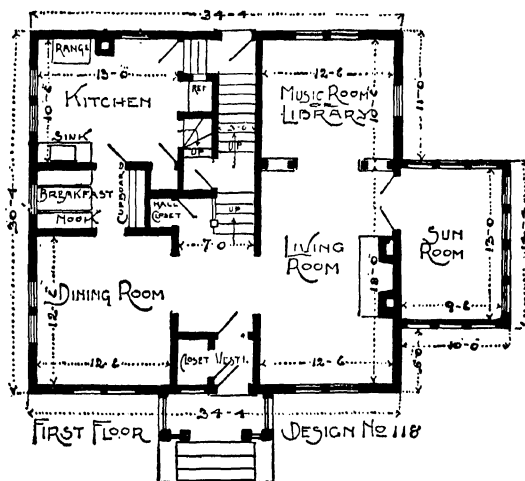


THE plan for this exceptional and attractive home is 36 feet 4 inches wide by 34 feet 4 inches in depth. This home, with the proper setting, cannot be surpassed, as the design is a distinctive type and has a very homelike and graceful appearance. The interior arrangement is very palatial and has every convenience found in larger and much more expensive homes. The well lighted vestibule with coat closet, reception hall with arch opening into living room, having fireplace, beautiful staircase, and arch or French doors leading to dining room, all combine in making this an extremely beautiful interior. A cozy breakfast nook, with cupboard, is located between dining room and kitchen. The kitchen has a clothes chute, chimney for range, space for refrigerator, which is iced from entry, and door to grade landing, leading to basement and outdoors. Three bedrooms are provided on second floor, each having large clothes closets, and connected to center hall and bathroom. The finish in hall, living room and dining room can be oak finished Old English, or silver gray, or birch stained red or brown mahogany. The finish in balance of house can be birch, white enameled, with mahogany stained doors on second floor. A brick water table extends around house, with stucco above. Basement under entire house fitted with storage room, laundry tubs, vegetable cellar and dust-proof coal bin. Height of ceilings: First floor, 9 feet, second floor, 8 feet.

NOTE: Lumber, brick or a combination of both may be substituted in place of stucco.



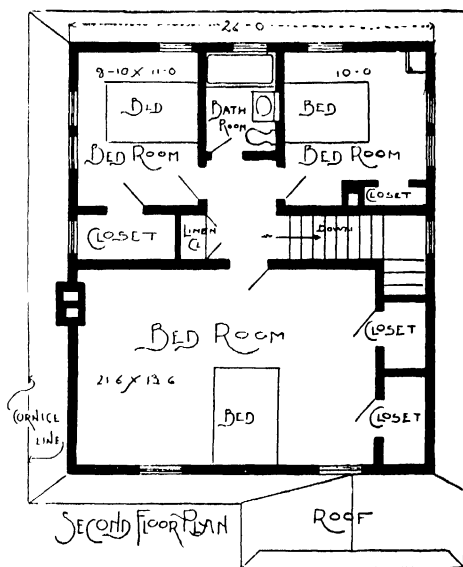
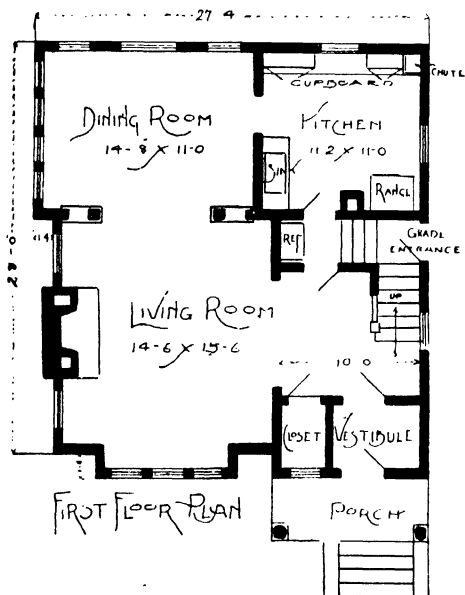
Design No. 118



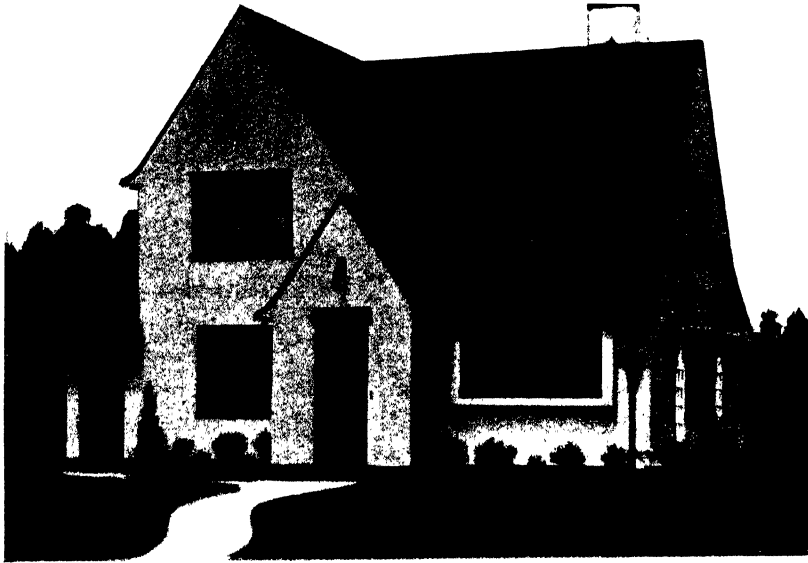
THE plan for this attractive home is 34 feet 4 inches in width by 30 feet 4 inches in depth, exclusive of sunroom. The interior arrangement is very spacious. The vestibule entrance with coat closet, center hall with beautiful staircase and hall closet, arch opening into dining room, also to living room, with fireplace, arch opening into music room or library, also French doors leading to sunroom, makes this an ideal and thoroughly modern interior. The breakfast nook with cupboard is conveniently located. The kitchen has a broom closet, refrigerator space, entrance to combination staircase leading to second floor, and door to grade landing, leading to basement and out-doors. Four bedrooms are provided for on second floor, each with roomy closets and connecting to center hall and bath room. The finish in hall, dining room, living room and library, can be oak, finished in silver gray, or birch, stained red or brown mahogany. The sunroom should be birch, finished in old ivory or French gray. The finish in balance of house can be birch, white enameled, with mahogany stained doors on second floor. Basement under entire house, fitted with laundry tubs, vegetable cellar, and dust-proof coal bin.



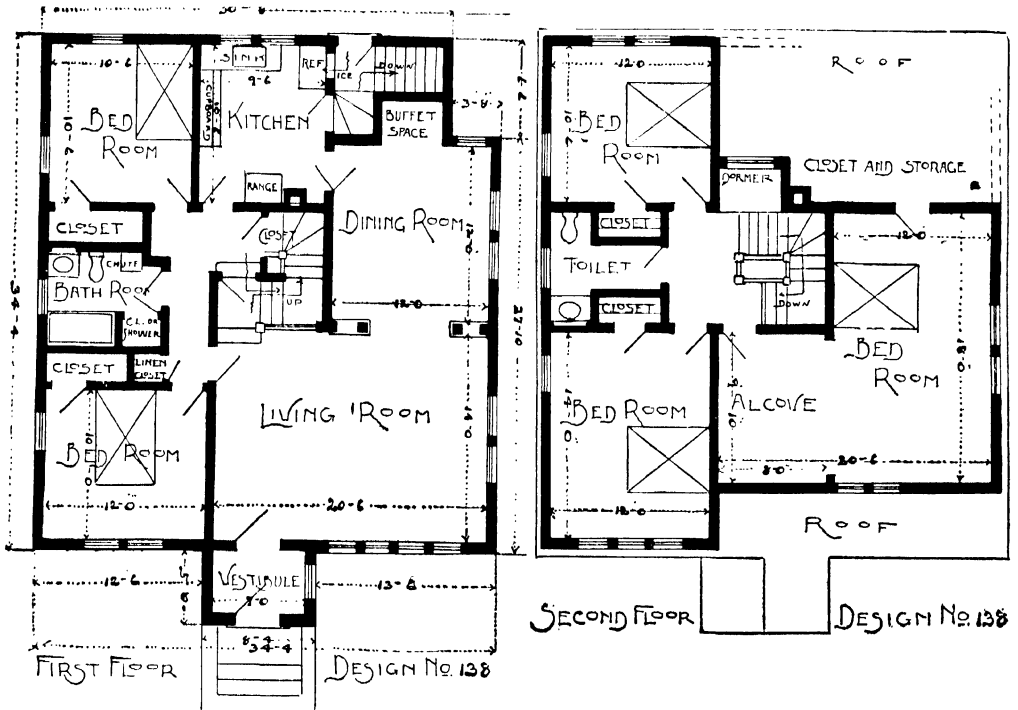
Design No. 122



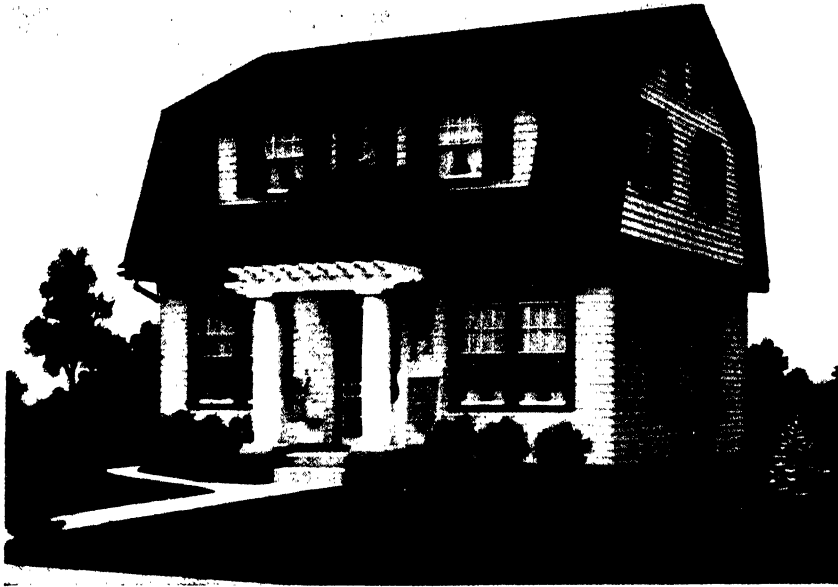
THIS distinctive Colonial style house is 26 feet wide by 28 feet in depth, and has a very graceful and pleasing exterior. The interior is very well planned. The vestibule, with coat closet adjoining, front hall with beautiful staircase, large living room, with fireplace, and artistic arch opening into large and well lighted dining room, all combine to make this a thoroughly practical and beautiful interior. In the roomy kitchen, there is a cupboard, chimney for range, clothes chute, and door to grade landing, leading to basement and outdoors. The second floor arrangement provides for three bed rooms, the front chamber being exceptionally large and having two clothes closets. The center hall connects all chambers and bath room. A 27-inch smooth troweled water table extends around house, with lap siding above. If desired, stucco, or a combination of brick and stucco can be substituted in place of the siding. Basement under entire house, fitted with laundry tubs, vegetable cellar, and dust-proof coal bin. Hot water or hot air can be used for heating. Height of ceilings: First floor, 9 feet; second floor, 8 feet 3 inches.



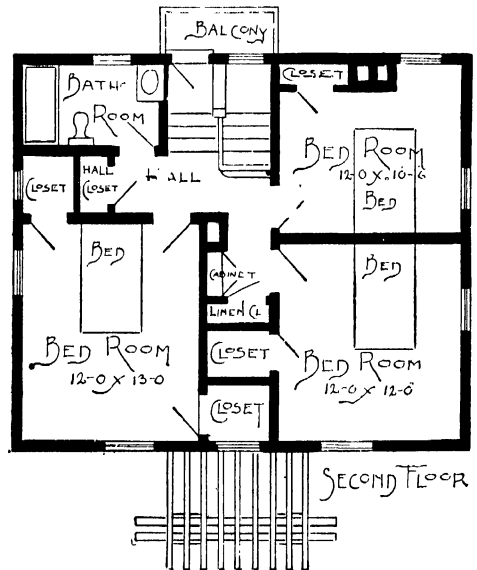
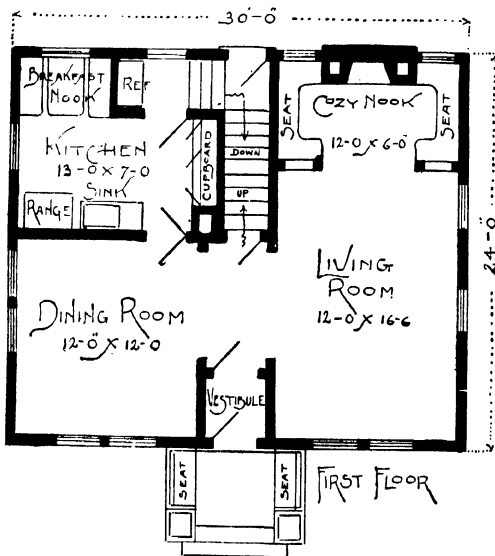
Design No. 138



THIS attractive home, mission style, is 34 feet 4 inches in width by 34 feet 4 inches in depth. The exterior design is the very latest, and hard to surpass for beauty in appearance. The interior arrangement is very luxurious and palatial. Entrance is made through vestibule, into large and well lighted living room, which has an artistic arch opening into dining room. Two bedrooms are provided on first floor, connecting with small center hall and bathroom. The kitchen has cupboard, chimney for range, refrigerator space for outside icing, and door to grade landing, leading to basement and outdoors. Three additional bedrooms, and toilet are arranged for on second floor, each with ample closet space. Basement under entire house, fitted with laundry tubs, vegetable cellar and dust-proof coal bin. Height of ceilings: First floor, 9 feet; second floor, 8 feet 6 inches.



Design No. 164



THIS extremely artistic and modern Dutch colonial home is 30 feet in width by 24 feet in depth. The interior arrangement is very practical, spacious and appropriate for this style home. The vestibule entrance to center hall, with arch opening into dining room on one side, also arch opening into large well lighted living room on other side, the fireplace cozy nook with seats, at rear of living room, all combine in producing an interior of elegance and comfort. The kitchen has a cupboard, chimney for range, breakfast nook, and door to grade landing, leading to basement and out doors. The second floor is provided with three good size bedrooms, each with ample closet space. The center hall which connects all chambers and bathroom, has a hall closet and cabinet, also a door leading to balcony. A brick water table extends around house, with lap siding above. Basement under entire house fitted with laundry tubs, vegetable cellar and dust-proof coal bin. Height of ceilings; First floor, 9 feet; second floor, 8 feet 3 inches.

PRICE LIST

of Complete Working Plans, Details and Specifications

For Design No.

1.....	\$40.00
7.....	40.00
8.....	30.00
10.....	25.00
11.....	40.00
12.....	40.00
14.....	25.00
15.....	30.00
17.....	25.00
20.....	30.00
22.....	25.00
30.....	30.00
36.....	30.00
42 or 42A.....	25.00

For Design No.

52.....	\$30.00
60 or 60A.....	22.50
64.....	25.00
72.....	25.00
74.....	27.50
80 or 80B.....	25.00
88.....	25.00
94.....	25.00
102 or 102A.....	22.50
106.....	27.50
118.....	30.00
122.....	25.00
138.....	30.00
164.....	25.00

The prices quoted above are for one complete set of plans, details and specifications.

ADDITIONAL SETS OF PLANS, INCLUDING DETAILS\$3.50 per set

ADDITIONAL SETS OF SPECIFICATIONS..... 1.00 per set

(No extra charge for reversing plans)

COMPLETE PLANS include blue prints of front, rear and both side elevations, wall section, transverse or longitudinal section showing attic plan and full details of construction, basement plan including section of foundation wall, also complete floor plans, all drawn to a scale of one-quarter inch to the foot.

DETAILS include blue prints of arches, fireplace, bookcases, breakfast nook, kitchen cabinet, doors, staircase, moldings and all interior trim, drawn to a scale of one inch to the foot. The various fixtures are shown in two or three styles, affording you a choice in design.

SPECIFICATIONS include from ten to twelve typewritten pages and are complete in every particular, covering all products required, the kind and quality, and the manner in which the labor is to be performed.

INSTRUCTIONS FOR ORDERING PLANS.

When ordering plans, kindly enclose remittance in full, with order. (Postal regulations do not permit shipping plans C. O. D.) If you desire to have plans reversed (a transposition of the rooms, from one side to the other) be sure and mention when ordering. Plans will be shipped same day as order is received.

Plan Service Company

224 SOUTH LEXINGTON, ST. PAUL, MINN.
P. O. BOX 3286 PHONE ELKHURST 2425

Plans and Specifications

Exterior Material

If desired, lumber (siding or shingles), stucco, brick veneer, hollow tile and brick, or a combination of either may be substituted in place of the specific material shown in illustration, without making any change in plans. A 12-inch foundation wall provides for use of any of these materials. If hollow tile and brick is used, the outside dimensions of building should be increased one foot in length and width, six inches on all sides, to retain the same inside measurements as shown in floor plan illustration. A detail sheet is furnished with each set of plans, showing the exact method of construction, with use of any of the materials above mentioned.

Interior Changes

Changes in arrangement of interior fixtures, such as eliminating or adding fireplace, substituting French doors or plain cased openings in place of arches, eliminating or adding certain fixtures or cabinets, or omitting kitchen chimney, can be arranged for at owner's will, by noting changes in writing and incorporating same in specifications and contract.

Alterations in Plans

When the alterations desired require only the changing of partitions or slight rearrangement of rooms, lengthening or diminishing size of building, changing location or size of windows and doors, it is not necessary to have such changes shown on the blue prints, but if changes are desired, such as will require redrawing of plans (refer to following paragraph).

Special Plans

If you do not find a design in this book to serve your purpose and desire to have a special set of drawings prepared, simply mail us a rough pencil sketch of the arrangement wanted and we will promptly quote you our most reasonable rate for preparing the special plans.

Location

The homes illustrated in this book are suitable for erection in any locality. In sections where the climate is warm the year round, and where full basement under entire house is not required, the foundation plan is used in the same manner, to provide for basement under any certain portion of house, and for correct wall footing, if no basement at all is required.

Instructions for Ordering Plans

When ordering plans, kindly enclose remittance in full, with order. (Postal regulations do not permit shipping plans C. O. D.) If you desire to have plans reversed (a transposition of the rooms, from one side to the other) be sure and mention when ordering. Plans will be shipped same day as order is received.

